

For Research Use Only

GTPBP2 Polyclonal antibody

Catalog Number: 11557-1-AP



Basic Information

Catalog Number:

11557-1-AP

Size:

150ul, Concentration: 300 ug/ml by Nanodrop and 267 ug/ml by Bradford method using BSA as the standard;

Source:

Rabbit

Isotype:

IgG

Immunogen Catalog Number:

AG2113

GenBank Accession Number:

BC028347

GeneID (NCBI):

54676

UNIPROT ID:

Q9BX10

Full Name:

GTP binding protein 2

Calculated MW:

602 aa, 66 kDa

Observed MW:

60 kDa

Purification Method:

Antigen affinity purification

Recommended Dilutions:

WB 1:500-1:2000

IP 0.5-4.0 ug for 1.0-3.0 mg of total protein lysate

IHC 1:50-1:500

Applications

Tested Applications:

WB, IP, IHC, ELISA

Species Specificity:

human, mouse

Note-IHC: suggested antigen retrieval with TE buffer pH 9.0; (*) Alternatively, antigen retrieval may be performed with citrate buffer pH 6.0

Positive Controls:

WB : human kidney tissue, human spleen tissue

IP : mouse spleen tissue,

IHC : human pancreas tissue,

Storage

Storage:

Store at -20°C. Stable for one year after shipment.

Storage Buffer:

PBS with 0.02% sodium azide and 50% glycerol pH 7.3.

Aliquoting is unnecessary for -20°C storage

*** 20ul sizes contain 0.1% BSA

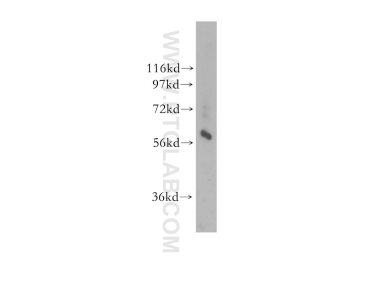
For technical support and original validation data for this product please contact:

T: 1 (888) 4PTGLAB (1-888-478-4522) (toll free in USA), or 1(312) 455-8498 (outside USA)

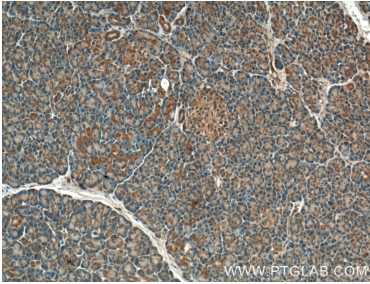
E: proteintech@ptglab.com
W: ptglab.com

This product is exclusively available under Proteintech Group brand and is not available to purchase from any other manufacturer.

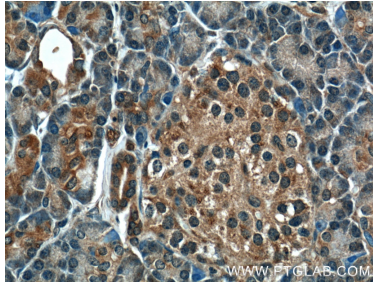
Selected Validation Data



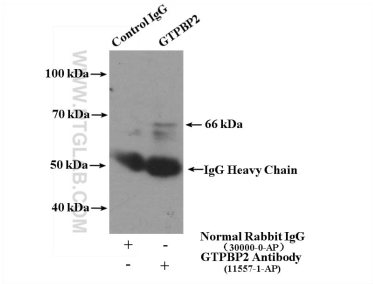
human kidney tissue were subjected to SDS PAGE followed by western blot with 11557-1-AP (GTPBP2 antibody) at dilution of 1:200 incubated at room temperature for 1.5 hours.



Immunohistochemical analysis of paraffin-embedded human pancreas tissue slide using 11557-1-AP (GTPBP2 Antibody) at dilution of 1:200 (under 10x Lens).



Immunohistochemical analysis of paraffin-embedded human pancreas tissue slide using 11557-1-AP (GTPBP2 Antibody) at dilution of 1:200 (under 40x lens).



IP result of anti-GTPBP2 (IP:11557-1-AP, 4ug; Detection:11557-1-AP 1:300) with mouse spleen tissue lysate 4000ug.