

For Research Use Only

MED15 Polyclonal antibody

Catalog Number: 11566-1-AP

Featured Product

18 Publications



Basic Information

Catalog Number:

11566-1-AP

Size:

150ul, Concentration: 750 ug/ml by Nanodrop and 400 ug/ml by Bradford method using BSA as the standard;

Source:

Rabbit

Isotype:

IgG

Immunogen Catalog Number:

AG2143

GenBank Accession Number:

BC017110

GeneID (NCBI):

51586

UNIPROT ID:

Q96RN5

Full Name:

mediator complex subunit 15

Calculated MW:

788 aa, 87 kDa

Observed MW:

105 kDa

Purification Method:

Antigen affinity purification

Recommended Dilutions:

WB 1:500-1:2000

IP 0.5-4.0 ug for 1.0-3.0 mg of total protein lysate

IHC 1:20-1:200

IF/ICC 1:20-1:200

Applications

Tested Applications:

WB, IHC, IF/ICC, IP, ELISA

Cited Applications:

WB, IHC, IF, ChIP

Species Specificity:

human

Cited Species:

human, mouse

Note-IHC: suggested antigen retrieval with TE buffer pH 9.0; (*) Alternatively, antigen retrieval may be performed with citrate buffer pH 6.0

Positive Controls:

WB : K-562 cells, SMMC-7721 cells, HuH-7 cells

IP : K-562 cells,

IHC : human prostate cancer tissue,

IF/ICC : SH-SY5Y cells,

Background Information

MED15, also named as TIG1, CAG7A, CTG7A, PCQAP, TIG-1, TNRC7 and ARC105, is a subunit of the multiprotein complexes PC2 and ARC/DRIP and may function as a transcriptional coactivator in RNA polymerase II transcription. It contains stretches of trinucleotide repeats and is located in the chromosome 22 region which is deleted in DiGeorge syndrome. MED15 is recruited to promoters by direct interaction with gene-specific regulatory proteins. It is about 105kd in SDS-page (doi.org/10.3109/10409238.2013.840259).

Notable Publications

Author	Pubmed ID	Journal	Application
Takuya Nakatsubo	25382556	Drug Discov Ther	WB, IF
Masayuki Kumafuji	24840924	Genes Cells	ChIP
Cristina Battle	33772081	Commun Biol	IF

Storage

Storage:

Store at -20°C. Stable for one year after shipment.

Storage Buffer:

PBS with 0.02% sodium azide and 50% glycerol pH 7.3.

Aliquoting is unnecessary for -20°C storage

*** 20ul sizes contain 0.1% BSA

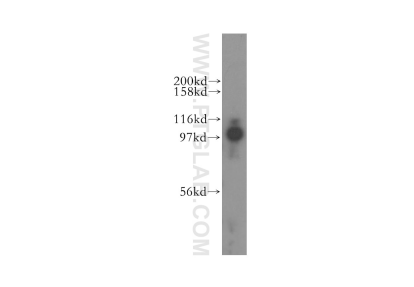
For technical support and original validation data for this product please contact:

T: 1 (888) 4PTGLAB (1-888-478-4522) (toll free in USA), or 1(312) 455-8498 (outside USA)

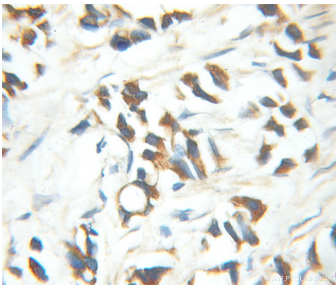
E: proteintech@ptglab.com
W: ptglab.com

This product is exclusively available under Proteintech Group brand and is not available to purchase from any other manufacturer.

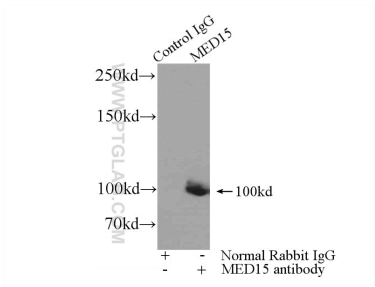
Selected Validation Data



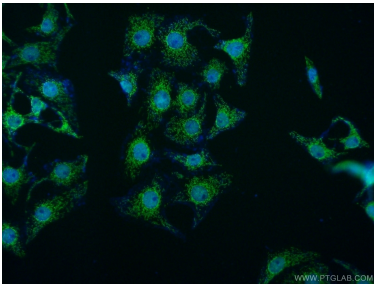
K-562 cells were subjected to SDS PAGE followed by western blot with 11566-1-AP (MED15 antibody) at dilution of 1:500 incubated at room temperature for 1.5 hours.



Immunohistochemical analysis of paraffin-embedded human prostate cancer using 11566-1-AP (MED15 antibody) at dilution of 1:100 (under 10x lens).



IP result of anti-MED15 (IP:11566-1-AP, 3ug; Detection:11566-1-AP 1:500) with K-562 cells lysate 3440ug.



Immunofluorescent analysis of SH-SY5Y cells using 11566-1-AP (MED15 antibody) at dilution of 1:50 and Alexa Fluor 488-conjugated Goat Anti-Rabbit IgG(H+L).