

For Research Use Only

CRLF3 Polyclonal antibody

Catalog Number: 11567-1-AP



Basic Information

Catalog Number: 11567-1-AP	GenBank Accession Number: BC023567	Purification Method: Antigen affinity purification
Size: 150ul , Concentration: 800 ug/ml by Nanodrop;	GeneID (NCBI): 51379	Recommended Dilutions: WB 1:500-1:2000
Source: Rabbit	UNIPROT ID: Q8IUI8	
Isotype: IgG	Full Name: cytokine receptor-like factor 3	
Immunogen Catalog Number: AG2144	Calculated MW: 442 aa, 50 kDa	
	Observed MW: 51 kDa	

Applications

Tested Applications: WB, ELISA	Positive Controls: WB : U-251 cells,
Species Specificity: human	

Background Information

Cytokine receptor-like factor 3 (CRLF3), a member of the group 1 in the prototypic class I cytokine receptors, contains the conserved cytokine receptor motif WSXWS, a single transmembrane segment and an intracellular Janus kinase (JAK) docking site (PMID: 31680856). CRLF3 is expressed in most normal human tissues and many tumor cell lines and has been reported to negatively regulate cell cycle progression (PMID: 19427400). CRLF3 has been identified as a human neuroprotective EV-3 (Epo) receptor (PMID: 37168680). It is involved neurogenesis, neuron survival, and dendritic development (PMID: 34233200).

Storage

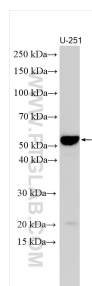
Storage:
Store at -20°C. Stable for one year after shipment.
Storage Buffer:
PBS with 0.02% sodium azide and 50% glycerol pH 7.3.
Aliquoting is unnecessary for -20°C storage

*** 20ul sizes contain 0.1% BSA

For technical support and original validation data for this product please contact:
T: 1 (888) 4PTGLAB (1-888-478-4522) (toll free in USA), or 1(312) 455-8498 (outside USA)
E: proteintech@ptglab.com
W: ptglab.com

This product is exclusively available under Proteintech Group brand and is not available to purchase from any other manufacturer.

Selected Validation Data



U-251 cells were subjected to SDS PAGE followed by western blot with 11567-1-AP (CRLF3 antibody) at dilution of 1:1000 incubated at room temperature for 1.5 hours.