

For Research Use Only

# RASEF Polyclonal antibody

Catalog Number: 11569-1-AP

Featured Product

1 Publications



## Basic Information

<b>Catalog Number:</b> 11569-1-AP	<b>GenBank Accession Number:</b> BC023566	<b>Purification Method:</b> Antigen affinity purification
<b>Size:</b> 150ul, Concentration: 800 µg/ml by Nanodrop and 467 µg/ml by Bradford method using BSA as the standard;	<b>GeneID (NCBI):</b> 158158	<b>Recommended Dilutions:</b> WB 1:500-1:2000 IHC 1:20-1:200
<b>Source:</b> Rabbit	<b>Full Name:</b> RAS and EF-hand domain containing	
<b>Isotype:</b> IgG	<b>Calculated MW:</b> 740 aa, 83 kDa	
<b>Immunogen Catalog Number:</b> AG2149	<b>Observed MW:</b> 83 kDa	

## Applications

<b>Tested Applications:</b> IHC, WB, ELISA	<b>Positive Controls:</b> WB: mouse testis tissue, mouse heart tissue IHC: human pancreas cancer tissue,
<b>Cited Applications:</b> IF, IHC, IP, WB	
<b>Species Specificity:</b> human, mouse	
<b>Cited Species:</b> human	
<b>Note-IHC: suggested antigen retrieval with TE buffer pH 9.0; (*) Alternatively, antigen retrieval may be performed with citrate buffer pH 6.0</b>	

## Background Information

### Notable Publications

Author	Pubmed ID	Journal	Application
Oshita Hideto H	23686708	Mol Cancer Res	WB, IHC, IF, IP

## Storage

**Storage:**  
Store at -20°C. Stable for one year after shipment.  
**Storage Buffer:**  
PBS with 0.02% sodium azide and 50% glycerol pH 7.3.  
Aliquoting is unnecessary for -20°C storage

\*\*\* 20ul sizes contain 0.1% BSA

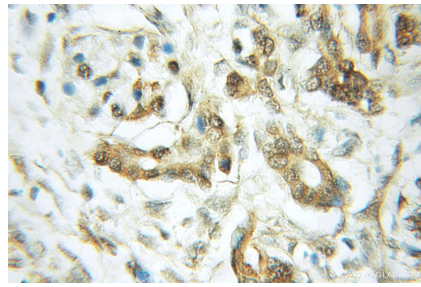
For technical support and original validation data for this product please contact:  
T: 1 (888) 4PTGLAB (1-888-478-4522) (toll free in USA), or 1(312) 455-8498 (outside USA)  
E: proteintech@ptglab.com  
W: ptglab.com

This product is exclusively available under Proteintech Group brand and is not available to purchase from any other manufacturer.

## Selected Validation Data



mouse testis tissue were subjected to SDS PAGE followed by western blot with 11569-1-AP (RASEF antibody) at dilution of 1:300 incubated at room temperature for 1.5 hours.



Immunohistochemical analysis of paraffin-embedded human pancreas cancer using 11569-1-AP (RASEF antibody) at dilution of 1:50 (under 10x lens).