

For Research Use Only

PSMA6 Polyclonal antibody

Catalog Number: 11573-1-AP

3 Publications



Basic Information

Catalog Number:

11573-1-AP

Size:

150ul, Concentration: 300 ug/ml by Nanodrop and 167 ug/ml by Bradford method using BSA as the standard;

Source:

Rabbit

Isotype:

IgG

Immunogen Catalog Number:

AG2154

GenBank Accession Number:

BC023659

GeneID (NCBI):

5687

UNIPROT ID:

P60900

Full Name:

proteasome (prosome, macropain) subunit, alpha type, 6

Calculated MW:

246 aa, 27 kDa

Observed MW:

27-29 kDa

Purification Method:

Antigen affinity purification

Recommended Dilutions:

WB 1:500-1:3000

IP 0.5-4.0 ug for 1.0-3.0 mg of total protein lysate

IHC 1:50-1:500

IF/ICC 1:20-1:200

Applications

Tested Applications:

WB, IHC, IF/ICC, FC (Intra), IP, ELISA

Cited Applications:

WB, IF

Species Specificity:

human, mouse, rat

Cited Species:

human, oyster

Note-IHC: suggested antigen retrieval with TE buffer pH 9.0; (*) Alternatively, antigen retrieval may be performed with citrate buffer pH 6.0

Positive Controls:

WB: A549 cells, HEK-293 cells, HepG2 cells, Jurkat cells, MCF-7 cells, Neuro-2a cells

IP: HEK-293 cells,

IHC: human lung cancer tissue, human testis tissue, human thyroid cancer tissue, mouse brain tissue, mouse colon tissue, mouse testis tissue, rat small intestine tissue, rat testis tissue

IF/ICC: HeLa cells, MCF-7 cells, HepG2 cells

Background Information

PSMA6 (Proteasome subunit alpha type-6) is also named as PROS27 and belongs to the peptidase T1A family. The proteasome is a multicatalytic proteinase complex which is characterized by its ability to cleave peptides with Arg, Phe, Tyr, Leu, and Glu adjacent to the leaving group at neutral or slightly basic pH. It also has an ATP-dependent proteolytic activity.

Notable Publications

Author	Pubmed ID	Journal	Application
Xiaohong Huang	27880033	Proteomics	WB, IF
Qian-Wei Luo	36549896	Small	WB, IF
Xiaoyan Wei	38244822	Fish Shellfish Immunol	WB

Storage

Storage:

Store at -20°C. Stable for one year after shipment.

Storage Buffer:

PBS with 0.02% sodium azide and 50% glycerol pH 7.3.

Aliquoting is unnecessary for -20°C storage

*** 20ul sizes contain 0.1% BSA

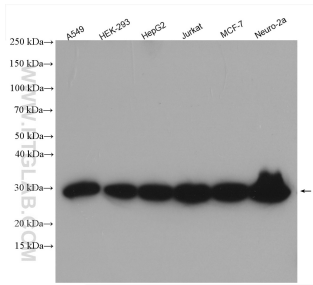
For technical support and original validation data for this product please contact:

T: 1 (888) 4PTGLAB (1-888-478-4522) (toll free in USA), or 1(312) 455-8498 (outside USA)

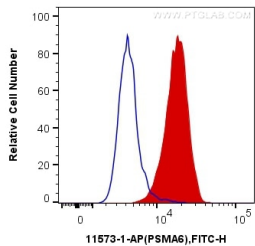
E: proteintech@ptglab.com
W: ptglab.com

This product is exclusively available under Proteintech Group brand and is not available to purchase from any other manufacturer.

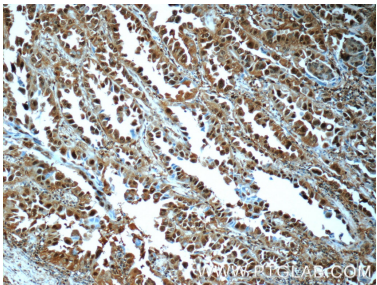
Selected Validation Data



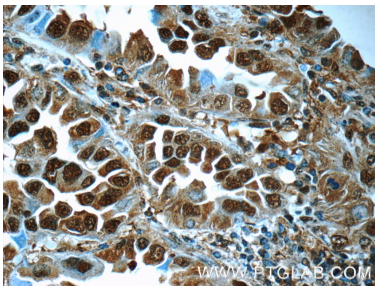
Various lysates were subjected to SDS PAGE followed by western blot with 11573-1-AP (PSMA6 antibody) at dilution of 1:1500 incubated at room temperature for 1.5 hours.



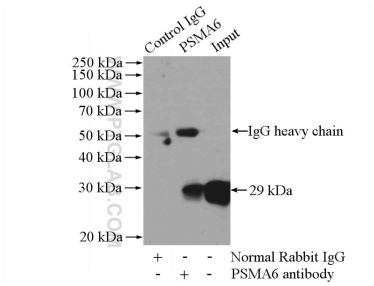
1X10⁶ HepG2 cells were intracellularly stained with 0.2 ug Anti-Human PSMA6 (11573-1-AP) and CoraLite®488-Conjugated AffiniPure Goat Anti-Rabbit IgG(H+L) at dilution 1:1000 (red), or 0.2 ug Control Antibody. Cells were fixed with 4% PFA and permeabilized with Flow Cytometry Perm Buffer (PF00011-C).



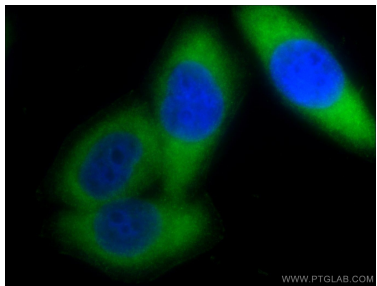
Immunohistochemical analysis of paraffin-embedded human lung cancer tissue slide using 11573-1-AP (PSMA6 Antibody) at dilution of 1:50 (under 10x lens).



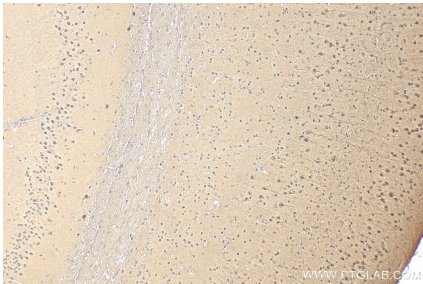
Immunohistochemical analysis of paraffin-embedded human lung cancer tissue slide using 11573-1-AP (PSMA6 Antibody) at dilution of 1:50 (under 40x lens).



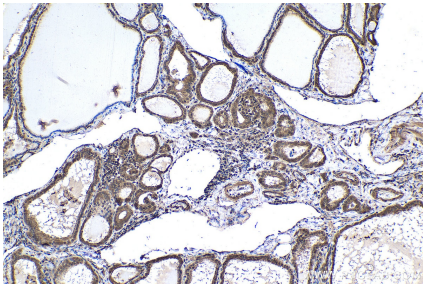
IP result of anti-PSMA6 (IP:11573-1-AP, 4ug; Detection:11573-1-AP 1:1000) with HEK-293 cells lysate 3200ug.



Immunofluorescent analysis of HeLa cells using 11573-1-AP (PSMA6 antibody) at dilution of 1:50 and Alexa Fluor 488-conjugated AffiniPure Goat Anti-Rabbit IgG(H+L).



Immunohistochemical analysis of paraffin-embedded mouse brain tissue slide using 11573-1-AP (PSMA6 antibody) at dilution of 1:1000 (under 10x lens). Heat mediated antigen retrieval with Tris-EDTA buffer (pH 9.0).



Immunohistochemical analysis of paraffin-embedded human thyroid cancer tissue slide using 11573-1-AP (PSMA6 antibody) at dilution of 1:1000 (under 10x lens). Heat mediated antigen retrieval with Tris-EDTA buffer (pH 9.0).