

For Research Use Only

# SCIN Polyclonal antibody

Catalog Number: 11579-1-AP

Featured Product

5 Publications



## Basic Information

### Catalog Number:

11579-1-AP

### Size:

150ul, Concentration: 350 ug/ml by Nanodrop and 233 ug/ml by Bradford method using BSA as the standard;

### Source:

Rabbit

### Isotype:

IgG

### Immunogen Catalog Number:

AG2168

### GenBank Accession Number:

BC021090

### GeneID (NCBI):

85477

### UNIPROT ID:

Q9Y6U3

### Full Name:

scinderin

### Calculated MW:

715 aa, 81 kDa

### Observed MW:

80 kDa

### Purification Method:

Antigen affinity purification

### Recommended Dilutions:

WB 1:500-1:2000

IP 0.5-4.0 ug for 1.0-3.0 mg of total protein lysate

IHC 1:20-1:200

IF/ICC 1:200-1:800

## Applications

### Tested Applications:

WB, IHC, IF/ICC, IP, ELISA

### Cited Applications:

WB, IHC, IF

### Species Specificity:

human, mouse, rat

### Cited Species:

human

**Note-IHC: suggested antigen retrieval with TE buffer pH 9.0; (\*) Alternatively, antigen retrieval may be performed with citrate buffer pH 6.0**

### Positive Controls:

WB : human placenta tissue,

IP : human placenta tissue,

IHC : human pancreas cancer tissue,

IF/ICC : HepG2 cells,

## Notable Publications

Author	Pubmed ID	Journal	Application
Zsolia I. Laszlo	36309735	Acta Neuropathol Commun	WB
Xiaofeng Lai	29744289	FEBS Open Bio	WB,IF
Ka Zhang	38351505	J Am Soc Nephrol	IF

## Storage

### Storage:

Store at -20°C. Stable for one year after shipment.

### Storage Buffer:

PBS with 0.02% sodium azide and 50% glycerol pH 7.3.

Aliquoting is unnecessary for -20°C storage

\*\*\* 20ul sizes contain 0.1% BSA

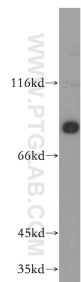
For technical support and original validation data for this product please contact:

T: 1 (888) 4PTGLAB (1-888-478-4522) (toll free in USA), or 1(312) 455-8498 (outside USA)

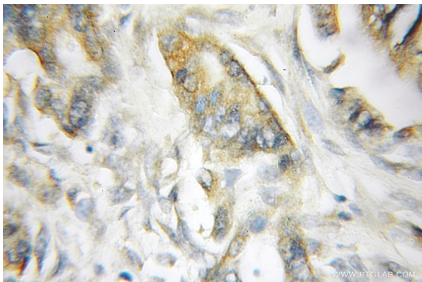
E: proteintech@ptglab.com  
W: ptglab.com

This product is exclusively available under Proteintech Group brand and is not available to purchase from any other manufacturer.

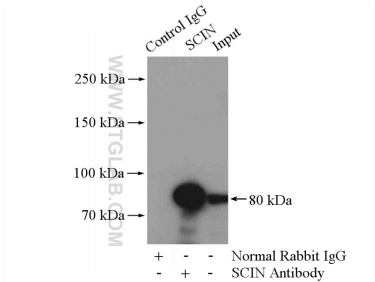
Selected Validation Data



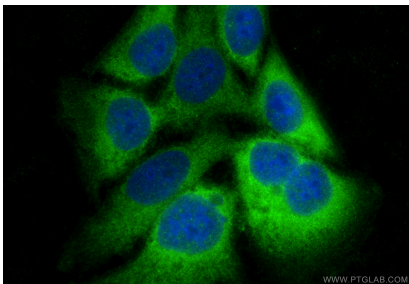
human placenta tissue were subjected to SDS PAGE followed by western blot with 11579-1-AP (SCIN antibody) at dilution of 1:300 incubated at room temperature for 1.5 hours.



Immunohistochemical analysis of paraffin-embedded human pancreas cancer using 11579-1-AP (SCIN antibody) at dilution of 1:50 (under 10x lens).



IP result of anti-SCIN (IP:11579-1-AP, 4ug; Detection:11579-1-AP 1:300) with human placenta tissue lysate 2800ug.



Immunofluorescent analysis of (-20°C Ethanol) fixed HepG2 cells using SCIN antibody (11579-1-AP) at dilution of 1:400 and CoraLite®488-Conjugated Goat Anti-Rabbit IgG(H+L) (SA00013-2).