

For Research Use Only

# MTRF1 Polyclonal antibody

Catalog Number: 11581-1-AP



## Basic Information

<b>Catalog Number:</b> 11581-1-AP	<b>GenBank Accession Number:</b> BC027731	<b>Purification Method:</b> Antigen affinity purification
<b>Size:</b> 150ul, Concentration: 300 µg/ml by Nanodrop and 147 µg/ml by Bradford method using BSA as the standard;	<b>GeneID (NCBI):</b> 9617	<b>Recommended Dilutions:</b> WB 1:500-1:2000 IHC 1:50-1:500
<b>Source:</b> Rabbit	<b>Full Name:</b> mitochondrial translational release factor 1	
<b>Isotype:</b> IgG	<b>Calculated MW:</b> 445 aa, 52 kDa	
<b>Immunogen Catalog Number:</b> AG2170	<b>Observed MW:</b> 52 kDa	

## Applications

### Tested Applications:

IHC, WB, ELISA

### Species Specificity:

human, mouse

**Note-IHC: suggested antigen retrieval with TE buffer pH 9.0; (\*) Alternatively, antigen retrieval may be performed with citrate buffer pH 6.0**

### Positive Controls:

WB: mouse liver tissue,

IHC: human pancreas tissue, human liver tissue

## Background Information

### Storage

#### Storage:

Store at -20°C. Stable for one year after shipment.

#### Storage Buffer:

PBS with 0.02% sodium azide and 50% glycerol pH 7.3.

Aliquoting is unnecessary for -20°C storage

\*\*\* 20ul sizes contain 0.1% BSA

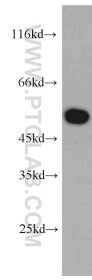
For technical support and original validation data for this product please contact:

T: 1 (888) 4PTGLAB (1-888-478-4522) (toll free in USA), or 1(312) 455-8498 (outside USA)

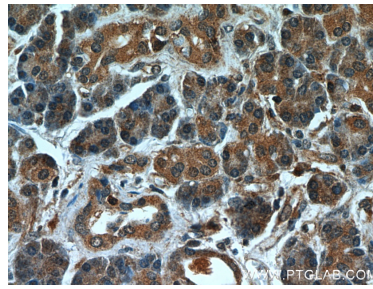
E: proteintech@ptglab.com  
W: ptglab.com

This product is exclusively available under Proteintech Group brand and is not available to purchase from any other manufacturer.

## Selected Validation Data



mouse liver tissue were subjected to SDS PAGE followed by western blot with 11581-1-AP (MTRF1 antibody) at dilution of 1:300 incubated at room temperature for 1.5 hours.



Immunohistochemical analysis of paraffin-embedded human pancreas using 11581-1-AP (MTRF1 antibody) at dilution of 1:50 (under 40x lens).