

For Research Use Only

PLSCR1 Polyclonal antibody

Catalog Number: 11582-1-AP

Featured Product

17 Publications



Basic Information

Catalog Number:

11582-1-AP

Size:

150ul, Concentration: 500 ug/ml by Nanodrop;

Source:

Rabbit

Isotype:

IgG

Immunogen Catalog Number:

AG2172

GenBank Accession Number:

BC021100

GeneID (NCBI):

5359

UNIPROT ID:

O15162

Full Name:

phospholipid scramblase 1

Calculated MW:

318 aa, 35 kDa

Observed MW:

35 kDa

Purification Method:

Antigen affinity purification

Recommended Dilutions:

WB 1:1000-1:5000

IP 0.5-4.0 ug for 1.0-3.0 mg of total protein lysate

IHC 1:50-1:500

IF/ICC 1:20-1:200

Applications

Tested Applications:

WB, IHC, IF/ICC, IP, ELISA

Cited Applications:

WB, IHC, IF, IP

Species Specificity:

human, mouse, rat

Cited Species:

human, mouse

Note-IHC: suggested antigen retrieval with TE buffer pH 9.0; (*) Alternatively, antigen retrieval may be performed with citrate buffer pH 6.0

Positive Controls:

WB: A549 cells, mouse lung tissue, human skeletal muscle tissue, mouse skeletal muscle tissue, HEK-293 cells, HepG2 cells, human placenta tissue

IP: mouse lung tissue,

IHC: mouse spleen tissue, human kidney tissue, human pancreas cancer tissue

IF/ICC: HeLa cells,

Background Information

PLSCR1 (Phospholipid scramblase 1) is a member of the family of membrane proteins that mediate the transbilayer movement of phospholipids ("scrambling") in a Ca²⁺ dependent manner, which was identified as a type II transmembrane protein involved in the calcium-dependent, nonspecific, rapid redistribution of phospholipids. A cysteine-rich palmitoylation motif [184CCCPCC189] of PLSCR1, a thioester linkage to the sulfhydryl groups of cysteines, controls the transportation of PLSCR1 to the cell membrane or nucleus (PMID: 32292520). PLSCR1 is strongly expressed in response to interferon (IFN) treatment and viral infection (PMID: 35138119, 23487022).

Notable Publications

Author	Pubmed ID	Journal	Application
Luca Marchetti	34524684	Eur J Immunol	IF
Gong Qiaoling Q	21806988	FEBS Lett	WB
Wei-Chao Liao	34773335	Cancer Sci	WB,IF,IP

Storage

Storage:

Store at -20°C. Stable for one year after shipment.

Storage Buffer:

PBS with 0.02% sodium azide and 50% glycerol, pH7.3

Aliquoting is unnecessary for -20°C storage

*** 20ul sizes contain 0.1% BSA

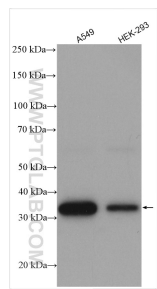
For technical support and original validation data for this product please contact:

T: 1 (888) 4PTGLAB (1-888-478-4522) (toll free in USA), or 1(312) 455-8498 (outside USA)

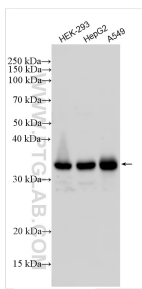
E: proteintech@ptglab.com
W: ptglab.com

This product is exclusively available under Proteintech Group brand and is not available to purchase from any other manufacturer.

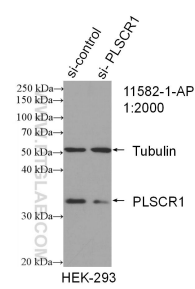
Selected Validation Data



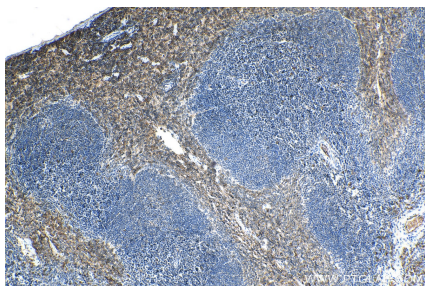
Various lysates were subjected to SDS PAGE followed by western blot with 11582-1-AP (PLSCR1 antibody) at dilution of 1:2500 incubated at room temperature for 1.5 hours.



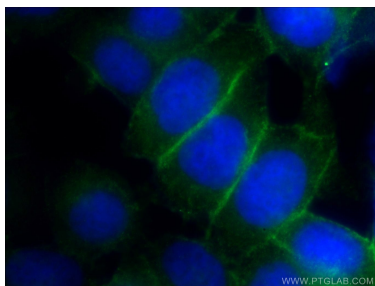
Various lysates were subjected to SDS PAGE followed by western blot with 11582-1-AP (PLSCR1 antibody) at dilution of 1:4000 incubated at room temperature for 1.5 hours.



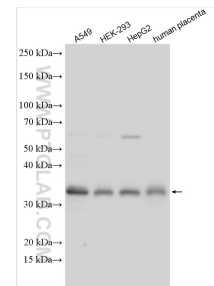
WB result of PLSCR1 antibody (11582-1-AP; 1:2000; incubated at room temperature for 1.5 hours) with sh-Control and sh-PLSCR1 transfected HEK-293 cells.



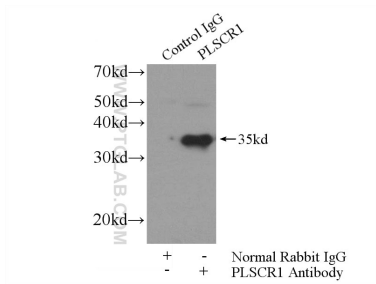
Immunohistochemical analysis of paraffin-embedded mouse spleen tissue slide using 11582-1-AP (PLSCR1 antibody) at dilution of 1:200 (under 10x lens). Heat mediated antigen retrieval with Tris-EDTA buffer (pH 9.0).



Immunofluorescent analysis of HeLa cells using 11582-1-AP (PLSCR1 antibody) at dilution of 1:50 and Alexa Fluor 488-conjugated AffiniPure Goat Anti-Rabbit IgG(H+L).



Various lysates were subjected to SDS PAGE followed by western blot with 11582-1-AP (PLSCR1 antibody) at dilution of 1:4000 incubated at room temperature for 1.5 hours.



IP result of anti-PLSCR1 (IP:11582-1-AP, 4ug; Detection:11582-1-AP 1:500) with mouse lung tissue lysate 2800ug.