

For Research Use Only

SRP68 Polyclonal antibody, PBS Only

Catalog Number:11585-1-PBS



Basic Information

Catalog Number: 11585-1-PBS	GenBank Accession Number: BC020238	Purification Method: Antigen affinity purification
Size: 100ug, Concentration: 1 mg/ml by Nanodrop;	GeneID (NCBI): 6730	
Source: Rabbit	UNIPROT ID: Q9UHB9	
Isotype: IgG	Full Name: signal recognition particle 68kDa	
Immunogen Catalog Number: AG2177	Calculated MW: 68 kDa	
	Observed MW: 68 kDa	

Applications

Tested Applications:
WB, IHC, IF/ICC, IP, Indirect ELISA

Species Specificity:
human, mouse, rat

Background Information

The signal recognition particle (SRP) is a ribonucleoprotein complex that mediates the targeting of secretory proteins to the rough endoplasmic reticulum (ER) membrane. This ribonucleoprotein complex might interact directly with the docking protein in the ER membrane and possibly participate in the elongation arrest function. SRP68 is one component of the ribonucleoprotein complex, and forms a heterodimer with SRP72.

Storage

Storage:
Store at -80°C.

Storage Buffer:
PBS Only

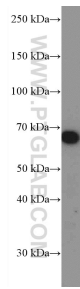
For technical support and original validation data for this product please contact:

T: 1 (888) 4PTGLAB (1-888-478-4522) (toll free in USA), or 1(312) 455-8498 (outside USA)

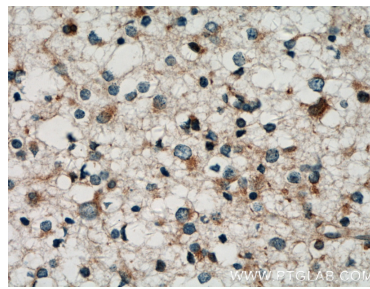
E: proteintech@ptglab.com
W: ptglab.com

This product is exclusively available under Proteintech Group brand and is not available to purchase from any other manufacturer.

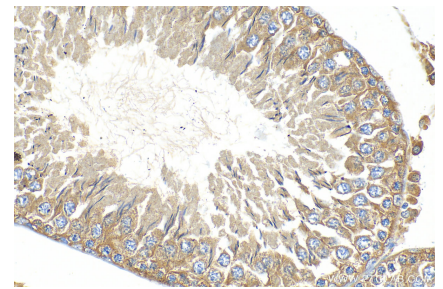
Selected Validation Data



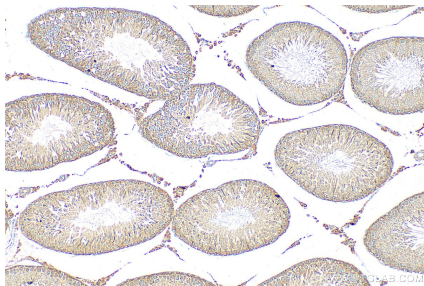
mouse brain tissue were subjected to SDS PAGE followed by western blot with 11585-1-AP (SRP68 antibody) at dilution of 1:1000 incubated at room temperature for 1.5 hours. This data was developed using the same antibody clone with 11585-1-PBS in a different storage buffer formulation.



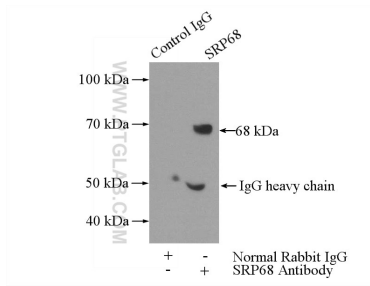
Immunohistochemical analysis of paraffin-embedded human gliomas tissue slide using 11585-1-AP (SRP68 antibody) at dilution of 1:200 (under 40x lens). Heat mediated antigen retrieval with Tris-EDTA buffer (pH 9.0). This data was developed using the same antibody clone with 11585-1-PBS in a different storage buffer formulation.



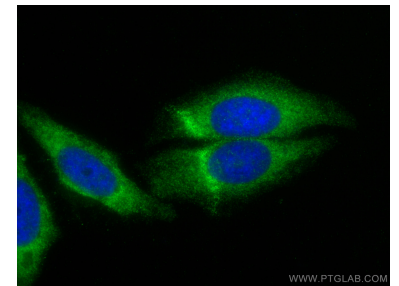
Immunohistochemical analysis of paraffin-embedded rat testis tissue slide using 11585-1-AP (SRP68 antibody) at dilution of 1:200 (under 40x lens). Heat mediated antigen retrieval with Tris-EDTA buffer (pH 9.0). This data was developed using the same antibody clone with 11585-1-PBS in a different storage buffer formulation.



Immunohistochemical analysis of paraffin-embedded rat testis tissue slide using 11585-1-AP (SRP68 antibody) at dilution of 1:200 (under 10x lens). Heat mediated antigen retrieval with Tris-EDTA buffer (pH 9.0). This data was developed using the same antibody clone with 11585-1-PBS in a different storage buffer formulation.



IP result of anti-SRP68 (IP:11585-1-AP, 4ug; Detection:11585-1-AP 1:400) with mouse kidney tissue lysate 4000ug. This data was developed using the same antibody clone with 11585-1-PBS in a different storage buffer formulation.



Immunofluorescent analysis of (-20°C Methanol) fixed HepG2 cells using SRP68 antibody (11585-1-AP) at dilution of 1:400 and Coralite@488-Conjugated AffiniPure Goat Anti-Rabbit IgG(H+L). This data was developed using the same antibody clone with 11585-1-PBS in a different storage buffer formulation.