

For Research Use Only

# ATPAF2 Polyclonal antibody, PBS Only

Catalog Number: 11598-1-PBS



## Basic Information

Catalog Number:

11598-1-PBS

Size:

100ug, Concentration: 1 mg/ml by Nanodrop;

Source:

Rabbit

Isotype:

IgG

Immunogen Catalog Number:

AG2164

GenBank Accession Number:

BC032126

GeneID (NCBI):

91647

UNIPROT ID:

Q8N5M1

Full Name:

ATP synthase mitochondrial F1 complex assembly factor 2

Calculated MW:

289 aa, 33 kDa

Observed MW:

33 kDa

Purification Method:

Antigen affinity purification

## Applications

Tested Applications:

WB, IHC, Indirect ELISA

Species Specificity:

human, mouse, rat

## Storage

Storage:

Store at -80°C.

Storage Buffer:

PBS Only

For technical support and original validation data for this product please contact:

T: 1 (888) 4PTGLAB (1-888-478-4522) (toll free in USA), or 1(312) 455-8498 (outside USA)

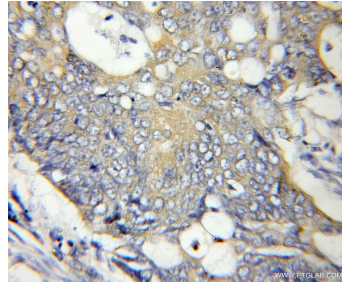
E: [proteintech@ptglab.com](mailto:proteintech@ptglab.com)  
W: [ptglab.com](http://ptglab.com)

This product is exclusively available under Proteintech Group brand and is not available to purchase from any other manufacturer.

## Selected Validation Data



HEK-293 cells were subjected to SDS PAGE followed by western blot with 11598-1-AP (ATPAF2 antibody) at dilution of 1:500 incubated at room temperature for 1.5 hours. This data was developed using the same antibody clone with 11598-1-PBS in a different storage buffer formulation.



Immunohistochemical analysis of paraffin-embedded human colon cancer using 11598-1-AP (ATPAF2 antibody) at dilution of 1:50 (under 10x lens). This data was developed using the same antibody clone with 11598-1-PBS in a different storage buffer formulation.