

For Research Use Only

IGF2BP2 Polyclonal antibody, PBS Only

Catalog Number: 11601-1-PBS

Featured Product



Basic Information

Catalog Number:

11601-1-PBS

Size:

100ug, Concentration: 1 mg/ml by Nanodrop;

Source:

Rabbit

Isotype:

IgG

Immunogen Catalog Number:

AG2142

GenBank Accession Number:

BC021290

GeneID (NCBI):

10644

UNIPROT ID:

Q9Y6M1

Full Name:

insulin-like growth factor 2 mRNA binding protein 2

Calculated MW:

65 kDa

Observed MW:

55-65 kDa

Purification Method:

Antigen affinity purification

Applications

Tested Applications:

WB, IHC, IF/ICC, IP, Indirect ELISA

Species Specificity:

human, mouse, rat

Background Information

Insulin-like growth factor 2 mRNA-binding protein 2 (IGF2BP2), is a member of a family of mRNA binding protein, which can bind to several mammalian cells' mRNAs. Thus it may involve in the regulation of translation of mRNA. IGF2BP2's polymorphisms is risk factor for developing type 2 diabetes. This antibody raise against part of N-terminus of human IGF2BP2. IGF2BP2 has some isoforms with the MW of 54-66 kDa. Some literature has reported that multiple bands can be detected (PMID: 22427968, 36322753, 23069990).

Storage

Storage:

Store at -80°C.

Storage Buffer:

PBS only, pH7.3

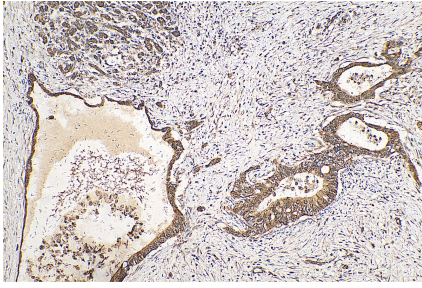
For technical support and original validation data for this product please contact:

T: 1 (888) 4PTGLAB (1-888-478-4522) (toll free in USA), or 1(312) 455-8498 (outside USA)

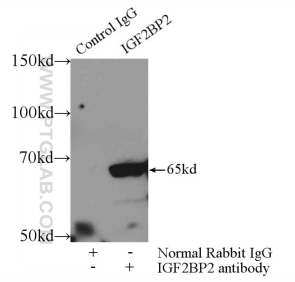
E: proteintech@ptglab.com
W: ptglab.com

This product is exclusively available under Proteintech Group brand and is not available to purchase from any other manufacturer.

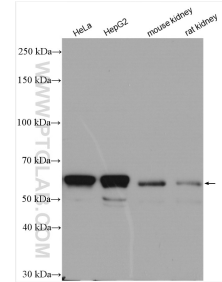
Selected Validation Data



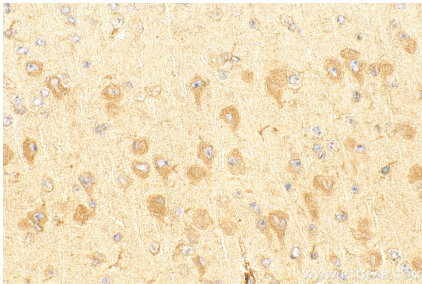
Immunohistochemical analysis of paraffin-embedded human pancreas cancer tissue slide using 11601-1-AP (IGF2BP2 antibody) at dilution of 1:200 (under 10x lens). Heat mediated antigen retrieval with Tris-EDTA buffer (pH 9.0). This data was developed using the same antibody clone with 11601-1-PBS in a different storage buffer formulation.



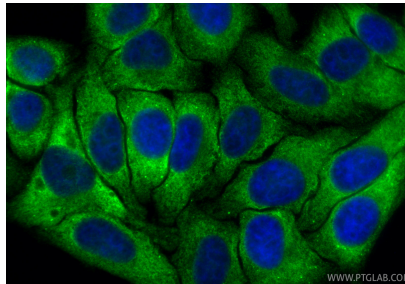
IP result of anti-IGF2BP2 (IP:11601-1-AP, 3ug; Detection:11601-1-AP 1:500) with HEK-293 cells lysate 1000ug. This data was developed using the same antibody clone with 11601-1-PBS in a different storage buffer formulation.



Various lysates were subjected to SDS PAGE followed by western blot with 11601-1-AP (IGF2BP2 antibody) at dilution of 1:8000 incubated at room temperature for 1.5 hours. This data was developed using the same antibody clone with 11601-1-PBS in a different storage buffer formulation.



Immunohistochemical analysis of paraffin-embedded mouse brain tissue slide using 11601-1-AP (IGF2BP2 antibody) at dilution of 1:500 (under 40x lens). Heat mediated antigen retrieval with Tris-EDTA buffer (pH 9.0). This data was developed using the same antibody clone with 11601-1-PBS in a different storage buffer formulation.



Immunofluorescent analysis of (4% PFA) fixed HepG2 cells using IGF2BP2 antibody (11601-1-AP) at dilution of 1:200 and CoraLite®488-Conjugated Goat Anti-Rabbit IgG(H+L) (SA00013-2). This data was developed using the same antibody clone with 11601-1-PBS in a different storage buffer formulation.