

For Research Use Only

Cyclophilin B Polyclonal antibody

Catalog Number: 11607-1-AP

Featured Product

13 Publications



Basic Information

Catalog Number: 11607-1-AP	GenBank Accession Number: BC032138	Purification Method: Antigen affinity purification
Size: 150ul, Concentration: 650 µg/ml by Nanodrop and 193 µg/ml by Bradford method using BSA as the standard;	GeneID (NCBI): 5479	Recommended Dilutions: WB 1:1000-1:6000 IHC 1:50-1:500 IF 1:20-1:200
Source: Rabbit	Full Name: peptidylprolyl isomerase B (cyclophilin B)	
Isotype: IgG	Calculated MW: 216 aa, 24 kDa	
Immunogen Catalog Number: AG2161	Observed MW: 19-24 kDa	

Applications

Tested Applications:

IF, IHC, WB, ELISA

Cited Applications:

IF, IHC, WB

Species Specificity:

human, mouse

Cited Species:

human, monkey, mouse

Note-IHC: suggested antigen retrieval with TE buffer pH 9.0; (*) Alternatively, antigen retrieval may be performed with citrate buffer pH 6.0

Positive Controls:

WB: HeLa cells, U-937 cells, Raji cells, HepG2 cells, mouse liver tissue, NIH/3T3 cells, Jurkat cells, RAW 264.7 cells, rat liver tissue

IHC: human lymphoma tissue, human liver cancer tissue, human pancreas cancer tissue

IF: HeLa cells,

Background Information

PPIB, also named as CYPB, SCYLP, PPIase B and CYP-S1, belongs to the cyclophilin-type PPIase family and PPIase B subfamily. PPIases accelerate the folding of proteins. It catalyzes the cis-trans isomerization of proline imidic peptide bonds in oligopeptides. PPIB is secreted in biological fluids such as blood or milk and binds to a specific receptor present on the human lymphoblastic cell line Jurkat and on human peripheral blood lymphocytes. The full-length of PPIB has 216aa (24 kDa), and a 33aa-signal peptide could be removed in the mature form (about 19 kDa).

Notable Publications

Author	Pubmed ID	Journal	Application
Pei-Hsuan Chen	31564558	Mol Cell	WB
Yue Fei F	21136946	Proteomics Clin Appl	WB,IHC
Roberta Besio	31171565	Dis Model Mech	

Storage

Storage:

Store at -20°C. Stable for one year after shipment.

Storage Buffer:

PBS with 0.02% sodium azide and 50% glycerol pH 7.3.

Aliquoting is unnecessary for -20°C storage

*** 20ul sizes contain 0.1% BSA

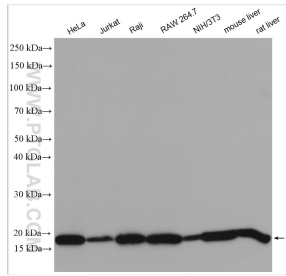
For technical support and original validation data for this product please contact:

T: 1 (888) 4PTGLAB (1-888-478-4522) (toll free in USA), or 1(312) 455-8498 (outside USA)

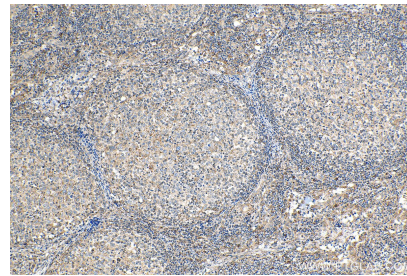
E: proteintech@ptglab.com
W: ptglab.com

This product is exclusively available under Proteintech Group brand and is not available to purchase from any other manufacturer.

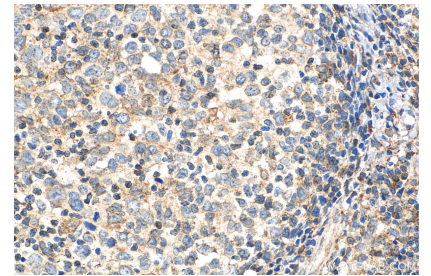
Selected Validation Data



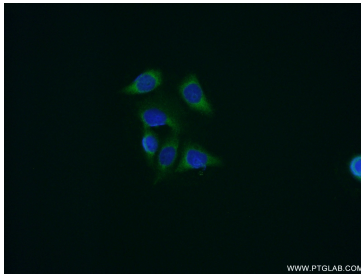
HeLa cells were subjected to SDS PAGE followed by western blot with 11607-1-AP (Cyclophilin B antibody) at dilution of 1:3000 incubated at room temperature for 1.5 hours.



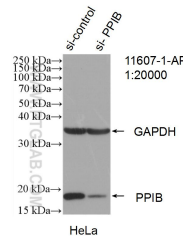
Immunohistochemical analysis of paraffin-embedded human lymphoma tissue slide using 11607-1-AP (Cyclophilin B antibody) at dilution of 1:200 (under 10x lens). Heat mediated antigen retrieval with Tris-EDTA buffer (pH 9.0).



Immunohistochemical analysis of paraffin-embedded human lymphoma tissue slide using 11607-1-AP (Cyclophilin B antibody) at dilution of 1:200 (under 40x lens). Heat mediated antigen retrieval with Tris-EDTA buffer (pH 9.0).



Immunofluorescent analysis of HeLa cells using 11607-1-AP (Cyclophilin B antibody) at dilution of 1:50 and Alexa Fluor 488-conjugated AffiniPure Goat Anti-Rabbit IgG(H+L).



WB result of Cyclophilin B antibody (11607-1-AP; 1:20000; incubated at room temperature for 1.5 hours) with sh-Control and sh-Cyclophilin B transfected HeLa cells.