

For Research Use Only

# hCG Beta Polyclonal antibody

Catalog Number: 11615-1-AP

Featured Product

14 Publications



## Basic Information

### Catalog Number:

11615-1-AP

### Size:

150ul, Concentration: 600 ug/ml by Nanodrop and 233 ug/ml by Bradford method using BSA as the standard;

### Source:

Rabbit

### Isotype:

IgG

### Immunogen Catalog Number:

AG2191

### GenBank Accession Number:

BC022796

### GeneID (NCBI):

1082

### UNIPROT ID:

PODN86

### Full Name:

CG beta

### Calculated MW:

165 aa, 18 kDa

### Purification Method:

Antigen affinity purification

### Recommended Dilutions:

IHC 1:50-1:500

## Applications

### Tested Applications:

IHC, ELISA

### Cited Applications:

WB, IHC, IF

### Species Specificity:

human

### Cited Species:

human

**Note-IHC: suggested antigen retrieval with TE buffer pH 9.0; (\*) Alternatively, antigen retrieval may be performed with citrate buffer pH 6.0**

### Positive Controls:

IHC : human placenta tissue, human breast cancer tissue

## Background Information

CGB is a member of the glycoprotein hormone beta chain family and encodes the beta 3 subunit of CG. Glycoprotein hormones are heterodimers consisting of a common alpha subunit and an unique beta subunit which confers biological specificity. CG is produced by the trophoblastic cells of the placenta and stimulates the ovaries to synthesize the steroids that are essential for the maintenance of pregnancy.

## Notable Publications

Author	Pubmed ID	Journal	Application
Fangfang Wang	32949999	EBioMedicine	IF
Mengdi Li	28983820	Biol Trace Elem Res	WB
Zhuo-Hang Li	35536241	Mol Hum Reprod	WB,IF

## Storage

### Storage:

Store at -20°C. Stable for one year after shipment.

### Storage Buffer:

PBS with 0.02% sodium azide and 50% glycerol pH 7.3.

Aliquoting is unnecessary for -20°C storage

\*\*\* 20ul sizes contain 0.1% BSA

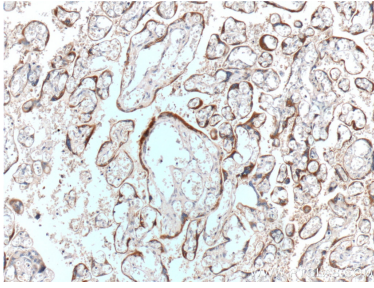
For technical support and original validation data for this product please contact:

T: 1 (888) 4PTGLAB (1-888-478-4522) (toll free in USA), or 1(312) 455-8498 (outside USA)

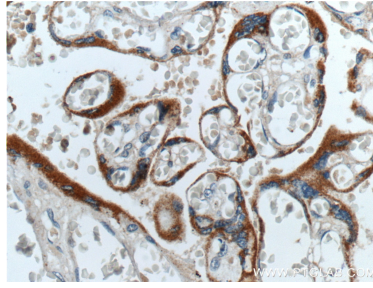
E: [proteintech@ptglab.com](mailto:proteintech@ptglab.com)  
W: [ptglab.com](http://ptglab.com)

This product is exclusively available under Proteintech Group brand and is not available to purchase from any other manufacturer.

## Selected Validation Data



Immunohistochemical analysis of paraffin-embedded human placenta tissue slide using 11615-1-AP (hCG beta antibody at dilution of 1:200 (under 10x lens).



Immunohistochemical analysis of paraffin-embedded human placenta tissue slide using 11615-1-AP (hCG beta antibody at dilution of 1:200 (under 40x lens).