

For Research Use Only

PRRG2 Polyclonal antibody

Catalog Number:11618-1-AP



Basic Information

Catalog Number:

11618-1-AP

Size:

150ul , Concentration: 600 ug/ml by Nanodrop;

Source:

Rabbit

Isotype:

IgG

Immunogen Catalog Number:

AG2197

GenBank Accession Number:

BC026032

GeneID (NCBI):

5639

UNIPROT ID:

O14669

Full Name:

proline rich Gla (G-carboxyglutamic acid) 2

Calculated MW:

179 aa, 20 kDa

Observed MW:

16-22 kDa

Purification Method:

Antigen affinity purification

Recommended Dilutions:

WB 1:500-1:2000

Applications

Tested Applications:

WB, ELISA

Species Specificity:

human, mouse, rat

Positive Controls:

WB : mouse kidney tissue,

Background Information

Proline-rich Gla protein 2 (PRRG2) represents one of the four known transmembrane-carboxyglutamic acid proteins in vertebrates. As a founding member of the vitamin K-dependent, single-pass integral membrane protein family, PRRG2 is characterized by an extracellular N-terminus consisting of approximately 45 amino acids rich in Gla, as well as a conserved Pro/Leu-Pro-xaa-Tyr (PY) motif proximal to its C-terminus. PRRG2 primarily localizes to the cell surface, where the Gla domain is exposed extracellularly, serving as a pivotal gene node with positive autoregulatory function that plays a critical role in maintaining human hemostasis (PMID: 38227081). The calculated molecular weight of PRRG2 is usually approximately 22 kDa.

Storage

Storage:

Store at -20°C. Stable for one year after shipment.

Storage Buffer:

PBS with 0.02% sodium azide and 50% glycerol pH 7.3.

Aliquoting is unnecessary for -20°C storage

*** 20ul sizes contain 0.1% BSA

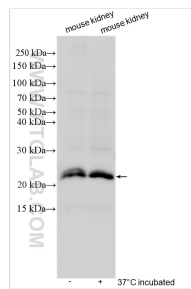
For technical support and original validation data for this product please contact:

T: 1 (888) 4PTGLAB (1-888-478-4522) (toll free in USA), or 1(312) 455-8498 (outside USA)

E: proteintech@ptglab.com
W: ptglab.com

This product is exclusively available under Proteintech Group brand and is not available to purchase from any other manufacturer.

Selected Validation Data



37°C incubated mouse kidney tissue and mouse kidney tissue were subjected to SDS PAGE followed by western blot with 11618-1-AP (PRRG2 antibody) at dilution of 1:1000 incubated at room temperature for 1.5 hours.