

For Research Use Only

EPSTI1 Polyclonal antibody

Catalog Number: 11627-1-AP

Featured Product

5 Publications



Basic Information

Catalog Number:

11627-1-AP

Size:

150ul, Concentration: 350 ug/ml by Nanodrop and 133 ug/ml by Bradford method using BSA as the standard;

Source:

Rabbit

Isotype:

IgG

Immunogen Catalog Number:

AG2157

GenBank Accession Number:

BC023660

GeneID (NCBI):

94240

UNIPROT ID:

Q96J88

Full Name:

epithelial stromal interaction 1 (breast)

Calculated MW:

410 aa, 47 kDa

Observed MW:

35-38 kDa

Purification Method:

Antigen affinity purification

Recommended Dilutions:

WB 1:1000-1:6000

IHC 1:20-1:200

Applications

Tested Applications:

WB, IHC, ELISA

Cited Applications:

WB, IHC, IF

Species Specificity:

human, mouse

Cited Species:

human, mouse

Note-IHC: suggested antigen retrieval with TE buffer pH 9.0; (*) Alternatively, antigen retrieval may be performed with citrate buffer pH 6.0

Positive Controls:

WB : HUVEC cells, mouse spleen tissue

IHC : human breast cancer tissue, human kidney tissue

Background Information

Real-time PCR revealed the highest expression in the placenta; strong expression in the small intestine, spleen, salivary gland, and testes; and low expression levels in normal breast and several other tissues. The expression of EPSTI1 was upregulated (range 5.6-72.1) in all 14 breast carcinomas tested. Microdissection revealed that both tumor and stromal tissue overexpressed EPSTI1. (PubMed: 11991720)

Notable Publications

Author	Pubmed ID	Journal	Application
Chaitra Rao	33970103	Elife	WB
Yan-Rou Bei	35778487	Acta Pharmacol Sin	WB,IHC,IF
Erfei Chen	30572883	Mol Cancer	WB

Storage

Storage:

Store at -20°C. Stable for one year after shipment.

Storage Buffer:

PBS with 0.02% sodium azide and 50% glycerol pH 7.3.

Aliquoting is unnecessary for -20°C storage

*** 20ul sizes contain 0.1% BSA

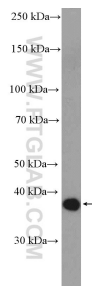
For technical support and original validation data for this product please contact:

T: 1 (888) 4PTGLAB (1-888-478-4522) (toll free in USA), or 1(312) 455-8498 (outside USA)

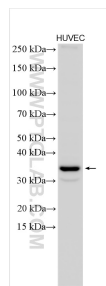
E: proteintech@ptglab.com
W: ptglab.com

This product is exclusively available under Proteintech Group brand and is not available to purchase from any other manufacturer.

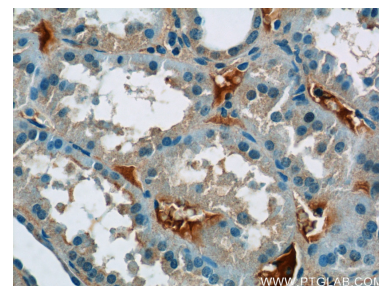
Selected Validation Data



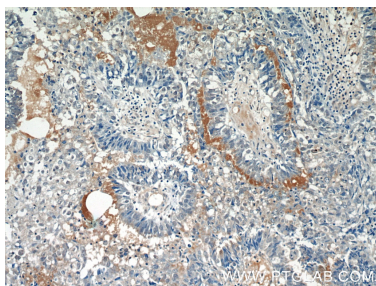
mouse spleen tissue was subjected to SDS PAGE followed by western blot with 11627-1-AP (EPSTI1 antibody) at dilution of 1:1000 incubated at room temperature for 1.5 hours.



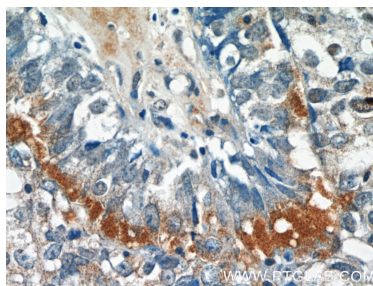
HUVEC cells were subjected to SDS PAGE followed by western blot with 11627-1-AP (EPSTI1 antibody) at dilution of 1:3000 incubated at room temperature for 1.5 hours.



Immunohistochemical analysis of paraffin-embedded human kidney tissue slide using 11627-1-AP (EPSTI1 Antibody) at dilution of 1:50 (under 40x lens).



Immunohistochemical analysis of paraffin-embedded human breast cancer tissue slide using 11627-1-AP (EPSTI1 Antibody) at dilution of 1:50 (under 10x lens).



Immunohistochemical analysis of paraffin-embedded human breast cancer tissue slide using 11627-1-AP (EPSTI1 Antibody) at dilution of 1:50 (under 40x lens).