

For Research Use Only

LRR 1 Polyclonal antibody

Catalog Number: 11628-1-AP **3 Publications**



Basic Information

Catalog Number: 11628-1-AP	GenBank Accession Number: BC030142	Purification Method: Antigen affinity purification
Size: 150ul , Concentration: 300 µg/ml by Nanodrop and 267 µg/ml by Bradford method using BSA as the standard;	GeneID (NCBI): 122769	Recommended Dilutions: WB 1:500-1:2000 IHC 1:20-1:200
Source: Rabbit	Full Name: peptidylprolyl isomerase (cyclophilin)-like 5	
Isotype: IgG	Calculated MW: 46.7 kDa	
Immunogen Catalog Number: AG2159	Observed MW: 47 kDa	

Applications

Tested Applications: IHC, WB, ELISA	Positive Controls: WB : U-937 cells,
Cited Applications: IF, WB	IHC : human pancreas cancer tissue,
Species Specificity: human, mouse, rat	
Cited Species: human, rat	

Note-IHC: suggested antigen retrieval with TE buffer pH 9.0; (*) Alternatively, antigen retrieval may be performed with citrate buffer pH 6.0

Background Information

Notable Publications

Author	Pubmed ID	Journal	Application
Rong Yang	29770434	Immunology	WB
Yunli Ling	32671118	J Immunol Res	WB, IF
Tianchi Chen	30111352	J Exp Clin Cancer Res	WB

Storage

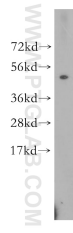
Storage:
Store at -20°C. Stable for one year after shipment.
Storage Buffer:
PBS with 0.02% sodium azide and 50% glycerol pH 7.3.
Aliquoting is unnecessary for -20°C storage

***** 20ul sizes contain 0.1% BSA**

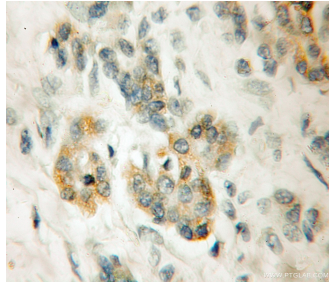
For technical support and original validation data for this product please contact:
T: 1 (888) 4PTGLAB (1-888-478-4522) (toll free in USA), or 1(312) 455-8498 (outside USA)
E: proteintech@ptglab.com
W: ptglab.com

This product is exclusively available under Proteintech Group brand and is not available to purchase from any other manufacturer.

Selected Validation Data



U-937 cells were subjected to SDS PAGE followed by western blot with 11628-1-AP (LRR 1 antibody) at dilution of 1:300 incubated at room temperature for 1.5 hours.



Immunohistochemical analysis of paraffin-embedded human pancreas cancer using 11628-1-AP (LRR 1 antibody) at dilution of 1:50 (under 10x lens).