

For Research Use Only

MIG6; ERRF1 Polyclonal antibody

Catalog Number: 11630-1-AP

Featured Product

20 Publications



Basic Information

Catalog Number:

11630-1-AP

Size:

150ul, Concentration: 650 ug/ml by Nanodrop and 273 ug/ml by Bradford method using BSA as the standard;

Source:

Rabbit

Isotype:

IgG

Immunogen Catalog Number:

AG2202

GenBank Accession Number:

BC025337

GeneID (NCBI):

54206

UNIPROT ID:

Q9UJM3

Full Name:

ERBB receptor feedback inhibitor 1

Calculated MW:

51 kDa

Observed MW:

51 kDa

Purification Method:

Antigen affinity purification

Recommended Dilutions:

WB 1:1000-1:6000

IHC 1:50-1:500

IF/ICC 1:200-1:800

Applications

Tested Applications:

WB, IHC, IF/ICC, ELISA

Cited Applications:

WB, IHC, IF, IP

Species Specificity:

human, mouse, rat

Cited Species:

human, mouse

Note-IHC: suggested antigen retrieval with TE buffer pH 9.0; (*) Alternatively, antigen retrieval may be performed with citrate buffer pH 6.0

Positive Controls:

WB : HCT 116 cells, HepG2 cells

IHC : human colon cancer tissue,

IF/ICC : HepG2 cells,

Background Information

ERRF1 (the product of mitogen-inducible gene 6, also known as MIG6) is an early response gene encoding a non-kinase scaffold adaptor protein induced by various stimuli such as hormones and stresses. ERRF1 is considered a negative regulator of EGFR because it can directly bind to EGFR, inhibit the catalytic activity of EGFR, and mediate EGFR lysosomal degradation. ERRF1 may play important roles in regulating stress response, maintaining homeostasis in tissues like joints or cardiac muscle, and functioning as a tumor suppressor.

Notable Publications

Author	Pubmed ID	Journal	Application
Mingqing Cui	34608122	Cell Death Discov	WB,IP,IHC,IF
Zixuan Li	28506767	Exp Mol Pathol	WB,IHC
Nai-Jie Fu	35307375	Toxicol Appl Pharmacol	WB

Storage

Storage:

Store at -20°C. Stable for one year after shipment.

Storage Buffer:

PBS with 0.02% sodium azide and 50% glycerol, pH7.3

Aliquoting is unnecessary for -20°C storage

*** 20ul sizes contain 0.1% BSA

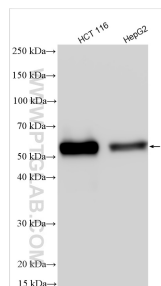
For technical support and original validation data for this product please contact:

T: 1 (888) 4PTGLAB (1-888-478-4522) (toll free in USA), or 1(312) 455-8498 (outside USA)

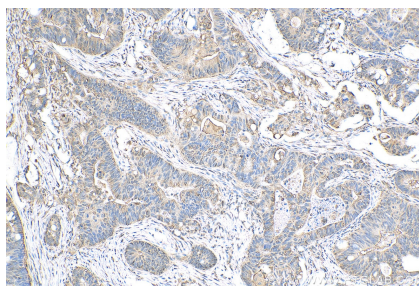
E: proteintech@ptglab.com
W: ptglab.com

This product is exclusively available under Proteintech Group brand and is not available to purchase from any other manufacturer.

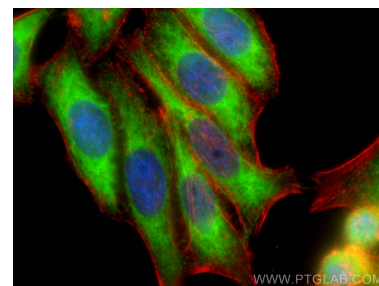
Selected Validation Data



Various lysates were subjected to SDS PAGE followed by western blot with 11630-1-AP (MIG6; ERRF1 antibody) at dilution of 1:3000 incubated at room temperature for 1.5 hours.



Immunohistochemical analysis of paraffin-embedded human colon cancer tissue slide using 11630-1-AP (MIG6; ERRF1 antibody) at dilution of 1:200 (under 10x lens). Heat mediated antigen retrieval with Tris-EDTA buffer (pH 9.0).



Immunofluorescent analysis of (-20°C Ethanol) fixed HepG2 cells using MIG6; ERRF1 antibody (11630-1-AP) at dilution of 1:400 and CoraLite®488-Conjugated Goat Anti-Rabbit IgG(H+L), CL594-Phalloidin (red).