

For Research Use Only

# NPLOC4 Polyclonal antibody

Catalog Number: 11638-1-AP

Featured Product

13 Publications



## Basic Information

### Catalog Number:

11638-1-AP

### Size:

150ul, Concentration: 200 ug/ml by Nanodrop and 153 ug/ml by Bradford method using BSA as the standard;

### Source:

Rabbit

### Isotype:

IgG

### Immunogen Catalog Number:

AG2219

### GenBank Accession Number:

BC025930

### GeneID (NCBI):

55666

### UNIPROT ID:

Q8TAT6

### Full Name:

nuclear protein localization 4 homolog (S. cerevisiae)

### Calculated MW:

608 aa, 68 kDa

### Observed MW:

68 kDa

### Purification Method:

Antigen affinity purification

### Recommended Dilutions:

WB 1:500-1:1000

IP 0.5-4.0 ug for 1.0-3.0 mg of total protein lysate

IHC 1:20-1:200

## Applications

### Tested Applications:

WB, IP, IHC, ELISA

### Cited Applications:

WB, IF, IP

### Species Specificity:

human, mouse, rat

### Cited Species:

human, mouse

**Note-IHC: suggested antigen retrieval with TE buffer pH 9.0; (\*) Alternatively, antigen retrieval may be performed with citrate buffer pH 6.0**

### Positive Controls:

WB : mouse kidney tissue, mouse heart tissue, rat heart tissue

IP : mouse kidney tissue,

IHC : human kidney tissue,

## Notable Publications

Author	Pubmed ID	Journal	Application
Yalcin Erzurumlu	36445513	Mol Biol Rep	WB
Tao Wang	27226613	J Biol Chem	WB
Youngdae Gwon	34739333	Science	IP

## Storage

### Storage:

Store at -20°C. Stable for one year after shipment.

### Storage Buffer:

PBS with 0.02% sodium azide and 50% glycerol pH 7.3.

Aliquoting is unnecessary for -20°C storage

\*\*\* 20ul sizes contain 0.1% BSA

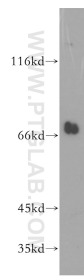
For technical support and original validation data for this product please contact:

T: 1 (888) 4PTGLAB (1-888-478-4522) (toll free in USA), or 1(312) 455-8498 (outside USA)

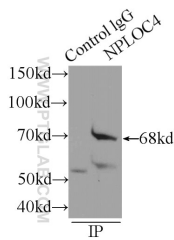
E: proteintech@ptglab.com  
W: ptglab.com

This product is exclusively available under Proteintech Group brand and is not available to purchase from any other manufacturer.

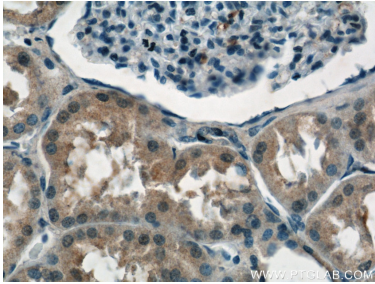
Selected Validation Data



mouse kidney tissue were subjected to SDS PAGE followed by western blot with 11638-1-AP (NPLOC4 antibody) at dilution of 1:200 incubated at room temperature for 1.5 hours.



IP result of anti-NPLOC4 (IP:11638-1-AP, 4ug; Detection:11638-1-AP 1:600) with mouse kidney tissue lysate 6000ug.



Immunohistochemical analysis of paraffin-embedded human kidney tissue slide using 11638-1-AP (NPLOC4 Antibody) at dilution of 1:50 (under 40x lens).