

For Research Use Only

CDC6 Polyclonal antibody

Catalog Number: 11640-1-AP

Featured Product

22 Publications



Basic Information

Catalog Number:

11640-1-AP

Size:

150ul, Concentration: 400 ug/ml by Nanodrop and 253 ug/ml by Bradford method using BSA as the standard;

Source:

Rabbit

Isotype:

IgG

Immunogen Catalog Number:

AG2228

GenBank Accession Number:

BC025232

GeneID (NCBI):

990

UNIPROT ID:

Q99741

Full Name:

cell division cycle 6 homolog (S. cerevisiae)

Calculated MW:

560 aa, 63 kDa

Observed MW:

63 kDa

Purification Method:

Antigen affinity purification

Recommended Dilutions:

WB 1:500-1:3000

IP 0.5-4.0 ug for 1.0-3.0 mg of total protein lysate

IHC 1:50-1:500

IF/ICC 1:200-1:800

Applications

Tested Applications:

WB, IHC, IF/ICC, IP, ELISA

Cited Applications:

WB, IHC, IF

Species Specificity:

human, mouse, rat

Cited Species:

human, mouse

Note-IHC: suggested antigen retrieval with TE buffer pH 9.0; (*) Alternatively, antigen retrieval may be performed with citrate buffer pH 6.0

Positive Controls:

WB: Jurkat cells, SMMC-7721 cells, HeLa cells

IP: HeLa cells,

IHC: mouse brain tissue, human colon cancer tissue, human colon tissue

IF/ICC: sodium arsenite treated HeLa cells,

Background Information

CDC6, also named as CDC18L and HsCDC18, belongs to the CDC6/cdc18 family. It is involved in the initiation of DNA replication and functions as a regulator at the early steps of DNA replication. The active Cdc6 functioning as a dimer at replication origins (10793143,15096526). It also participates in checkpoint controls that ensure DNA replication is completed before mitosis is initiated. It localizes in cell nucleus during cell cycle G1, but translocates to the cytoplasm at the start of S phase. The subcellular translocation of this protein during cell cycle is regulated through its phosphorylation by Cdk. Defects in CDC6 are the cause of Meier-Gorlin syndrome type 5 (MGORS5). MGORS5 is a syndrome characterized by bilateral microtia, aplasia/hypoplasia of the patellae, and severe intrauterine and postnatal growth retardation with short stature and poor weight gain. This antibody is a rabbit polyclonal antibody raised against residues near the C terminus of human CDC6.

Notable Publications

Author	Pubmed ID	Journal	Application
Hao Yang	27708221	Oncotarget	WB
Gang Xiong	32982311	Onco Targets Ther	WB
Xie Mengyan	36176446	Front Pharmacol	WB,IHC

Storage

Storage:

Store at -20°C. Stable for one year after shipment.

Storage Buffer:

PBS with 0.02% sodium azide and 50% glycerol pH 7.3.

Aliquoting is unnecessary for -20°C storage

*** 20ul sizes contain 0.1% BSA

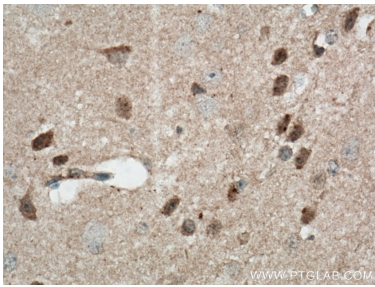
For technical support and original validation data for this product please contact:

T: 1 (888) 4PTGLAB (1-888-478-4522) (toll free in USA), or 1(312) 455-8498 (outside USA)

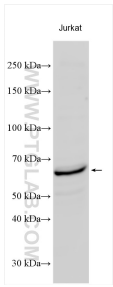
E: proteintech@ptglab.com
W: ptglab.com

This product is exclusively available under Proteintech Group brand and is not available to purchase from any other manufacturer.

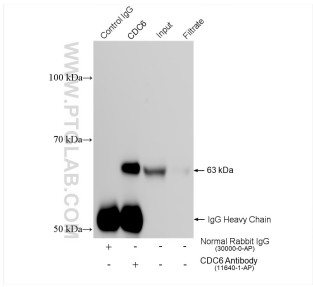
Selected Validation Data



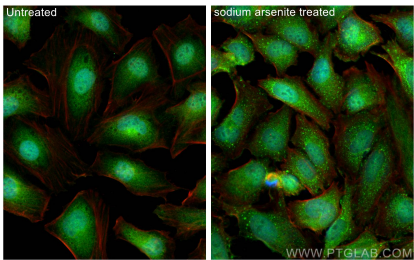
Immunohistochemical analysis of paraffin-embedded mouse brain tissue slide using 11640-1-AP (CDC6 antibody) at dilution of 1:200 (under 40x lens). Heat mediated antigen retrieval with Tris-EDTA buffer (pH 9.0).



Jurkat cells were subjected to SDS PAGE followed by western blot with 11640-1-AP (CDC6 antibody) at dilution of 1:1500 incubated at room temperature for 1.5 hours.



IP result of anti-CDC6 (IP:11640-1-AP, 4ug; Detection:11640-1-AP 1:1000) with HeLa cells lysate 1360 ug.



Immunofluorescent analysis of (4% PFA) fixed sodium arsenite treated HeLa cells using CDC6 antibody (11640-1-AP) at dilution of 1:400 and Multi-rAb CoraLite ® Plus 488-Goat Anti-Rabbit Recombinant Secondary Antibody (H+L) (RGAR002), CL594-phalloidin (red).