

For Research Use Only

# SAFB2 Polyclonal antibody

Catalog Number: 11642-1-AP

2 Publications



## Basic Information

### Catalog Number:

11642-1-AP

### Size:

150ul, Concentration: 650 ug/ml by Nanodrop and 367 ug/ml by Bradford method using BSA as the standard;

### Source:

Rabbit

### Isotype:

IgG

### Immunogen Catalog Number:

AG2230

### GenBank Accession Number:

BC025279

### GeneID (NCBI):

9667

### UNIPROT ID:

Q14151

### Full Name:

scaffold attachment factor B2

### Calculated MW:

528aa, 57 kDa; 953aa, 107 kDa

### Observed MW:

130 kDa

### Purification Method:

Antigen affinity purification

### Recommended Dilutions:

WB 1:5000-1:50000

IHC 1:20-1:200

IF/ICC 1:200-1:800

## Applications

### Tested Applications:

WB, IHC, IF/ICC, ELISA

### Cited Applications:

WB, IF

### Species Specificity:

human, rat

### Cited Species:

mouse

**Note-IHC: suggested antigen retrieval with TE buffer pH 9.0; (\*) Alternatively, antigen retrieval may be performed with citrate buffer pH 6.0**

### Positive Controls:

WB : MCF-7 cells, BxPC-3 cells, HeLa cells, rat pancreas tissue

IHC : human breast cancer tissue,

IF/ICC : U2OS cells,

## Background Information

SAFB2, also named as Scaffold attachment factor B2 or KIAA0138, is a 953 amino acid protein, which contains one SAP domain and one RRM (RNA recognition motif) domain. SAFB2 expressed at high levels in the CNS and at low levels in the liver. It also is expressed in a wide number of breast cancer cell lines. SAFB2 binds to scaffold/matrix attachment region (S/MAR) DNA and can function as an estrogen receptor corepressor and can also inhibit cell proliferation.

## Notable Publications

Author	Pubmed ID	Journal	Application
Bo Zheng	24339256	Proteomics	WB, IF
Rachel E Cherney	37468167	RNA	WB

## Storage

### Storage:

Store at -20°C. Stable for one year after shipment.

### Storage Buffer:

PBS with 0.02% sodium azide and 50% glycerol pH 7.3.

Aliquoting is unnecessary for -20°C storage

\*\*\* 20ul sizes contain 0.1% BSA

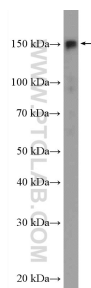
For technical support and original validation data for this product please contact:

T: 1 (888) 4PTGLAB (1-888-478-4522) (toll free in USA), or 1(312) 455-8498 (outside USA)

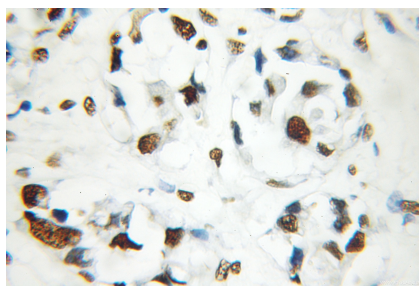
E: [proteintech@ptglab.com](mailto:proteintech@ptglab.com)  
W: [ptglab.com](http://ptglab.com)

This product is exclusively available under Proteintech Group brand and is not available to purchase from any other manufacturer.

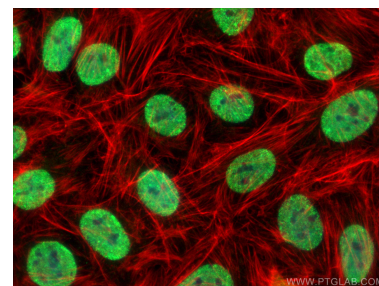
## Selected Validation Data



MCF-7 cells were subjected to SDS PAGE followed by western blot with 11642-1-AP (SAFB2 antibody) at dilution of 1:10000 incubated at room temperature for 1.5 hours.



Immunohistochemical analysis of paraffin-embedded human breast cancer using 11642-1-AP (SAFB2 antibody) at dilution of 1:50 (under 40x lens).



Immunofluorescent analysis of (4% PFA) fixed U2OS cells using SAFB2 antibody (11642-1-AP) at dilution of 1:400 and Coralite®488-Conjugated Goat Anti-Rabbit IgG(H+L) (SA00013-2), CL594-phalloidin (red).