

For Research Use Only

# SAFB2 Polyclonal antibody, PBS Only

Catalog Number: 11642-1-PBS



## Basic Information

**Catalog Number:**

11642-1-PBS

**Size:**

100ug, Concentration: 1 mg/ml by Nanodrop;

**Source:**

Rabbit

**Isotype:**

IgG

**Immunogen Catalog Number:**

AG2230

**GenBank Accession Number:**

BC025279

**GeneID (NCBI):**

9667

**UNIPROT ID:**

Q14151

**Full Name:**

scaffold attachment factor B2

**Calculated MW:**

528aa, 57 kDa; 953aa, 107 kDa

**Observed MW:**

130 kDa

**Purification Method:**

Antigen affinity purification

## Applications

**Tested Applications:**

WB, IHC, IF/ICC, Indirect ELISA

**Species Specificity:**

human, rat

## Background Information

SAFB2, also named as Scaffold attachment factor B2 or KIAA0138, is a 953 amino acid protein, which contains one SAP domain and one RRM (RNA recognition motif) domain. SAFB2 expressed at high levels in the CNS and at low levels in the liver. It also is expressed in a wide number of breast cancer cell lines. SAFB2 binds to scaffold/matrix attachment region (S/MAR) DNA and can function as an estrogen receptor corepressor and can also inhibit cell proliferation.

## Storage

**Storage:**

Store at -80°C.

**Storage Buffer:**

PBS only, pH7.3

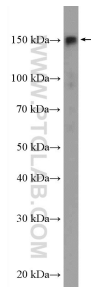
For technical support and original validation data for this product please contact:

T: 1 (888) 4PTGLAB (1-888-478-4522) (toll free in USA), or 1(312) 455-8498 (outside USA)

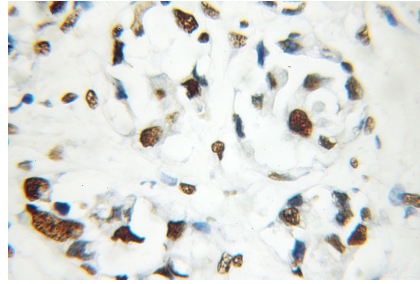
E: [proteintech@ptglab.com](mailto:proteintech@ptglab.com)  
W: [ptglab.com](http://ptglab.com)

**This product is exclusively available under Proteintech Group brand and is not available to purchase from any other manufacturer.**

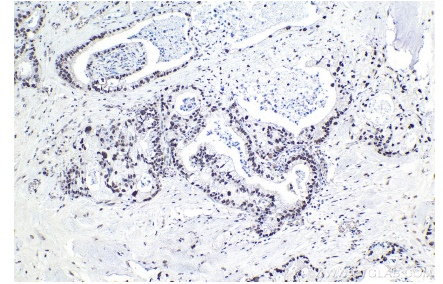
## Selected Validation Data



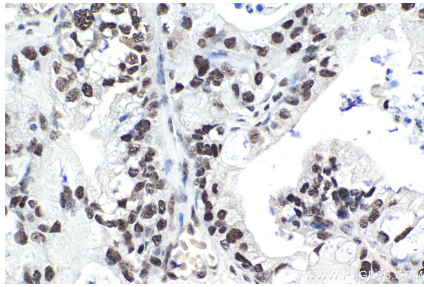
MCF-7 cells were subjected to SDS PAGE followed by western blot with 11642-1-AP (SAFB2 antibody) at dilution of 1:10000 incubated at room temperature for 1.5 hours. This data was developed using the same antibody clone with 11642-1-PBS in a different storage buffer formulation.



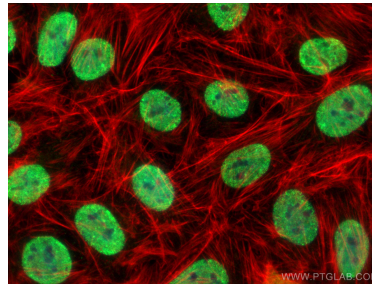
Immunohistochemical analysis of paraffin-embedded human breast cancer using 11642-1-AP (SAFB2 antibody) at dilution of 1:50 (under 40x lens). This data was developed using the same antibody clone with 11642-1-PBS in a different storage buffer formulation.



Immunohistochemical analysis of paraffin-embedded human pancreas cancer tissue slide using 11642-1-AP (SAFB2 antibody) at dilution of 1:2000 (under 10x lens). Heat mediated antigen retrieval with Tris-EDTA buffer (pH 9.0). This data was developed using the same antibody clone with 11642-1-PBS in a different storage buffer formulation.



Immunohistochemical analysis of paraffin-embedded human pancreas cancer tissue slide using 11642-1-AP (SAFB2 antibody) at dilution of 1:2000 (under 40x lens). Heat mediated antigen retrieval with Tris-EDTA buffer (pH 9.0). This data was developed using the same antibody clone with 11642-1-PBS in a different storage buffer formulation.



Immunofluorescent analysis of (4% PFA) fixed U2OS cells using SAFB2 antibody (11642-1-AP) at dilution of 1:400 and Coralite@488-Conjugated AffiniPure Goat Anti-Rabbit IgG(H+L) (SA00013-2), CL594-phalloidin (red). This data was developed using the same antibody clone with 11642-1-PBS in a different storage buffer formulation.