

For Research Use Only

KLC3 Polyclonal antibody

Catalog Number: 11645-1-AP



Basic Information

Catalog Number:

11645-1-AP

Size:

150ul , Concentration: 300 ug/ml by Nanodrop and 300 ug/ml by Bradford method using BSA as the standard;

Source:

Rabbit

Isotype:

IgG

Immunogen Catalog Number:

AG2243

GenBank Accession Number:

BC025318

GeneID (NCBI):

147700

UNIPROT ID:

Q6P597

Full Name:

kinesin light chain 3

Calculated MW:

55 kDa

Observed MW:

55 kDa

Purification Method:

Antigen affinity purification

Recommended Dilutions:

WB 1:500-1:2000

Applications

Tested Applications:

WB, ELISA

Species Specificity:

human, mouse, rat

Positive Controls:

WB : mouse testis tissue, human liver tissue, rat testis tissue

Storage

Storage:

Store at -20°C. Stable for one year after shipment.

Storage Buffer:

PBS with 0.02% sodium azide and 50% glycerol pH 7.3.

Aliquoting is unnecessary for -20°C storage

*** 20ul sizes contain 0.1% BSA

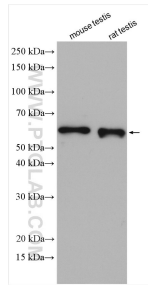
For technical support and original validation data for this product please contact:

T: 1 (888) 4PTGLAB (1-888-478-4522) (toll free in USA), or 1(312) 455-8498 (outside USA)

E: proteintech@ptglab.com
W: ptglab.com

This product is exclusively available under Proteintech Group brand and is not available to purchase from any other manufacturer.

Selected Validation Data



Various lysates were subjected to SDS PAGE followed by western blot with 11645-1-AP (KLC3 antibody) at dilution of 1:1000 incubated at room temperature for 1.5 hours.