

For Research Use Only

# SLC22A18 Polyclonal antibody

Catalog Number: 11646-2-AP

Featured Product

3 Publications



## Basic Information

<b>Catalog Number:</b> 11646-2-AP	<b>GenBank Accession Number:</b> BC015571	<b>Purification Method:</b> Antigen affinity purification
<b>Size:</b> 150ul , Concentration: 450 µg/ml by Nanodrop and 300 µg/ml by Bradford method using BSA as the standard;	<b>GeneID (NCBI):</b> 5002	<b>Recommended Dilutions:</b> WB 1:1000-1:4000 IP 0.5-4.0 ug for IP and 1:500-1:1000 for WB
<b>Source:</b> Rabbit	<b>Full Name:</b> solute carrier family 22, member 18	
<b>Isotype:</b> IgG	<b>Calculated MW:</b> 408 aa, 43 kDa	
<b>Immunogen Catalog Number:</b> AG2245	<b>Observed MW:</b> 40-50 kDa	

## Applications

<b>Tested Applications:</b> IP, WB, ELISA	<b>Positive Controls:</b> WB : mouse brain tissue, COLO 320 cells IP : mouse brain tissue,
<b>Cited Applications:</b> IHC, WB	
<b>Species Specificity:</b> human, mouse, rat	
<b>Cited Species:</b> human	

## Background Information

SLC22A18 is a member of the family of polyspecific organic-cation transporters that localize at the apical membrane surface of renal proximal tubules. SLC22A18 is expressed at high levels in the kidney, liver, colon and in fetal renal proximal tubules and present at lower levels in heart, brain and lung. Defects in SLC22A18 are associated with breast and lung cancer and are the cause of rhabdomyosarcoma type 1, a malignant tumor derived from striated muscle. More recently, SLC22A18 has been shown to functions as a tumor suppressor in glioma and represents a candidate biomarker for long-term survival in this disease.

## Notable Publications

Author	Pubmed ID	Journal	Application
Attje S Hoekstra	27402879	Hum Mol Genet	
Bicheng Zhang	25498886	Int J Biol Macromol	WB
He Hongyu H	21144813	Cancer Epidemiol	IHC

## Storage

**Storage:**  
Store at -20°C. Stable for one year after shipment.  
**Storage Buffer:**  
PBS with 0.02% sodium azide and 50% glycerol pH 7.3.  
Aliquoting is unnecessary for -20°C storage

\*\*\* 20ul sizes contain 0.1% BSA

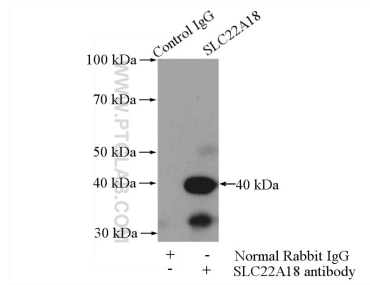
For technical support and original validation data for this product please contact:  
T: 1 (888) 4PTGLAB (1-888-478-4522) (toll free in USA), or 1(312) 455-8498 (outside USA)  
E: proteintech@ptglab.com  
W: ptglab.com

This product is exclusively available under Proteintech Group brand and is not available to purchase from any other manufacturer.

## Selected Validation Data



mouse brain tissue were subjected to SDS PAGE followed by western blot with 11646-2-AP (SLC22A18 antibody) at dilution of 1:1000 incubated at room temperature for 1.5 hours.



IP Result of anti-SLC22A18 (IP:11646-2-AP, 4ug; Detection:11646-2-AP 1:600) with mouse brain tissue lysate 4000ug.