

For Research Use Only

# CBX3 Polyclonal antibody

Catalog Number: 11650-2-AP

Featured Product

28 Publications



## Basic Information

### Catalog Number:

11650-2-AP

### Size:

150ul, Concentration: 650 ug/ml by Nanodrop and 287 ug/ml by Bradford method using BSA as the standard;

### Source:

Rabbit

### Isotype:

IgG

### Immunogen Catalog Number:

AG2251

### GenBank Accession Number:

BC000954

### GeneID (NCBI):

11335

### UNIPROT ID:

Q13185

### Full Name:

chromobox homolog 3 (HP1 gamma homolog, Drosophila)

### Calculated MW:

21 kDa

### Observed MW:

22 kDa

### Purification Method:

Antigen affinity purification

### Recommended Dilutions:

WB 1:500-1:2000

IP 0.5-4.0 ug for 1.0-3.0 mg of total protein lysate

IHC 1:20-1:200

IF/ICC 1:200-1:800

## Applications

### Tested Applications:

WB, IHC, IF/ICC, IP, ELISA

### Cited Applications:

WB, IHC, IF, IP, CoIP, ChIP

### Species Specificity:

human, mouse, rat

### Cited Species:

human, mouse, rat

**Note-IHC: suggested antigen retrieval with TE buffer pH 9.0; (\*) Alternatively, antigen retrieval may be performed with citrate buffer pH 6.0**

### Positive Controls:

WB: mouse spleen tissue, A375 cells, RAW 264.7 cells

IP: mouse spleen tissue,

IHC: human colon cancer tissue,

IF/ICC: HepG2 cells,

## Background Information

The family of Heterochromatin protein 1 (HP1) proteins is a family of highly conserved heterochromatin-associated non-histone chromosomal proteins, which has important functions in nucleus. These functions include gene activation or repression, regulation of binding of cohesion complexes to centromere, sequestration of genes to nuclear periphery, and heterochromatin formation and propagation. Much evidence shows that HP1 proteins interact with numerous proteins including methylated histones, histone methyltransferases and so on. CBX3 is one of the paralogues of HP1 proteins

## Notable Publications

Author	Pubmed ID	Journal	Application
Xiaoling Cui	36140818	Genes (Basel)	WB, IF
Xun Huang	30220457	Cell	WB
Jin Liu	36140750	Genes (Basel)	WB

## Storage

### Storage:

Store at -20°C. Stable for one year after shipment.

### Storage Buffer:

PBS with 0.02% sodium azide and 50% glycerol pH 7.3.

Aliquoting is unnecessary for -20°C storage

\*\*\* 20ul sizes contain 0.1% BSA

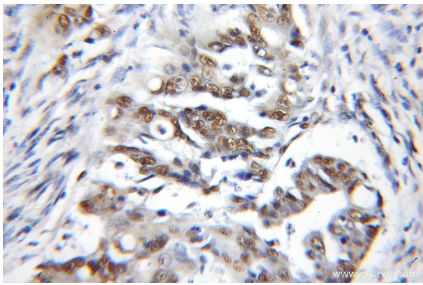
For technical support and original validation data for this product please contact:

T: 1 (888) 4PTGLAB (1-888-478-4522) (toll free in USA), or 1(312) 455-8498 (outside USA)

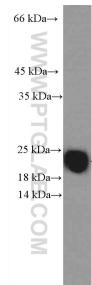
E: [proteintech@ptglab.com](mailto:proteintech@ptglab.com)  
W: [ptglab.com](http://ptglab.com)

This product is exclusively available under Proteintech Group brand and is not available to purchase from any other manufacturer.

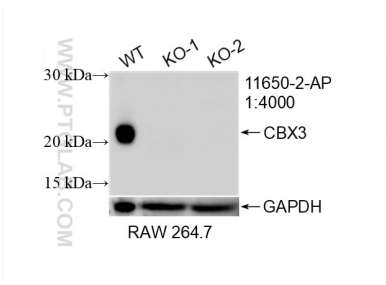
Selected Validation Data



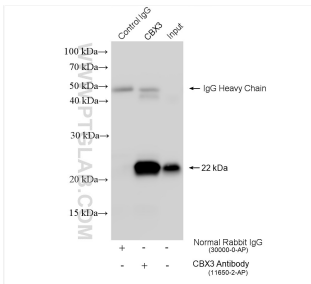
Immunohistochemical analysis of paraffin-embedded human colon cancer using 11650-2-AP (CBX3 antibody) at dilution of 1:100 (under 10x lens).



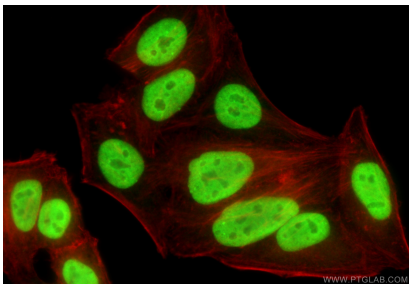
mouse spleen tissue were subjected to SDS PAGE followed by western blot with 11650-2-AP (CBX3 Antibody) at dilution of 1:1000 incubated at room temperature for 1.5 hours.



WB result of CBX3 antibody (11650-2-AP; 1:4000; room temperature for 1.5 hours) with wild-type and CBX3 knockout RAW 264.7 cells.



IP result of anti-CBX3 (IP:11650-2-AP, 4ug; Detection:11650-2-AP 1:3000) with mouse spleen tissue lysate 1560 ug.



Immunofluorescent analysis of (4% PFA) fixed HepG2 cells using CBX3 antibody (11650-2-AP) at dilution of 1:400 and CoraLite®488-Conjugated Goat Anti-Rabbit IgG(H+L) (SA00013-2), CL594-Phalloidin (red).