

For Research Use Only

# SSR4 Polyclonal antibody

Catalog Number: 11655-2-AP **2 Publications**



## Basic Information

<b>Catalog Number:</b> 11655-2-AP	<b>GenBank Accession Number:</b> BC003371	<b>Purification Method:</b> Antigen affinity purification
<b>Size:</b> 150ul, Concentration: 300 µg/ml by Nanodrop;	<b>GeneID (NCBI):</b> 6748	<b>Recommended Dilutions:</b> WB 1:1000-1:8000 IP 0.5-4.0 ug for 1.0-3.0 mg of total protein lysate IHC 1:50-1:500 IF 1:10-1:100
<b>Source:</b> Rabbit	<b>Full Name:</b> signal sequence receptor, delta (translocon-associated protein delta)	
<b>Isotype:</b> IgG	<b>Calculated MW:</b> 173 aa, 19 kDa	
<b>Immunogen Catalog Number:</b> AG2250	<b>Observed MW:</b> 19 kDa	

## Applications

**Tested Applications:**  
IF, IHC, IP, WB, ELISA

**Cited Applications:**  
IHC, WB

**Species Specificity:**  
human, mouse, rat

**Cited Species:**  
human

**Positive Controls:**

**WB:** HeLa cells, human placenta tissue, HepG2 cells, mouse liver tissue, rat liver tissue

**IP:** HeLa cells,

**IHC:** human pancreas cancer tissue,

**IF:** HeLa cells,

**Note-IHC: suggested antigen retrieval with TE buffer pH 9.0; (\*) Alternatively, antigen retrieval may be performed with citrate buffer pH 6.0**

## Background Information

Signal sequence receptor subunit delta (SSR4, or TRAPD) gene encodes the translocon-associated proteins subunit delta, which is about 19-kDa and is located at endoplasmic reticulum (ER) membrane, the translocon-associated proteins complex functions to bind calcium to the ER membrane and thereby regulate the retention of ER resident proteins. TRAP-delta can form heterotetramer with other TRAP homolog TRAP-alpha, TRAP-beta and TRAP-gamma.

## Notable Publications

Author	Pubmed ID	Journal	Application
Chatchai Phoomak	33523898	Sci Adv	WB
Weiwei He	34904499	Expert Rev Mol Diagn	IHC

## Storage

**Storage:**

Store at -20°C. Stable for one year after shipment.

**Storage Buffer:**

PBS with 0.02% sodium azide and 50% glycerol pH 7.3.

Aliquoting is unnecessary for -20°C storage

\*\*\* 20ul sizes contain 0.1% BSA

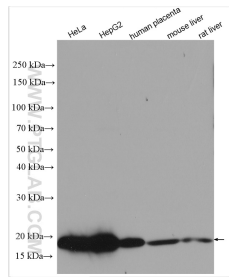
For technical support and original validation data for this product please contact:

T: 1 (888) 4PTGLAB (1-888-478-4522) (toll free in USA), or 1(312) 455-8498 (outside USA)

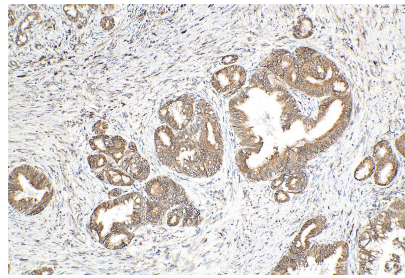
E: [proteintech@ptglab.com](mailto:proteintech@ptglab.com)  
W: [ptglab.com](http://ptglab.com)

This product is exclusively available under Proteintech Group brand and is not available to purchase from any other manufacturer.

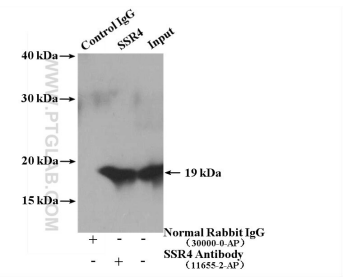
## Selected Validation Data



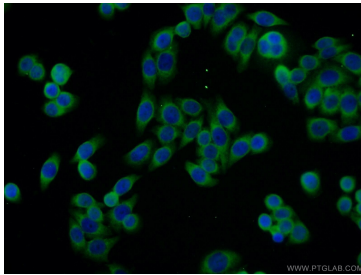
Various lysates were subjected to SDS PAGE followed by western blot with 11655-2-AP (SSR4 antibody) at dilution of 1:4000 incubated at room temperature for 1.5 hours.



Immunohistochemical analysis of paraffin-embedded human pancreas cancer tissue slide using 11655-2-AP (SSR4 antibody) at dilution of 1:200 (under 10x lens). Heat mediated antigen retrieval with Tris-EDTA buffer (pH 9.0).



IP result of anti-SSR4 (IP:11655-2-AP, 4ug; Detection:11655-2-AP 1:300) with HeLa cells lysate 2600 ug.



Immunofluorescent analysis of HeLa cells using 11655-2-AP (SSR4 antibody) at dilution of 1:25 and Alexa Fluor 488-conjugated AffiniPure Goat Anti-Rabbit IgG(H+L).