

For Research Use Only

CPI17 Polyclonal antibody

Catalog Number: 11658-1-AP



Basic Information

Catalog Number: 11658-1-AP	GenBank Accession Number: BC021089	Purification Method: Antigen affinity purification
Size: 150ul , Concentration: 450 ug/ml by Nanodrop;	GeneID (NCBI): 94274	Recommended Dilutions: WB 1:200-1:1000 IHC 1:50-1:500 IF/ICC 1:400-1:1600
Source: Rabbit	UNIPROT ID: Q96A00	
Isotype: IgG	Full Name: protein phosphatase 1, regulatory (inhibitor) subunit 14A	
Immunogen Catalog Number: AG2237	Calculated MW: 147 aa, 17 kDa	
	Observed MW: 17 kDa	

Applications

Tested Applications: WB, IHC, IF/ICC, ELISA	Positive Controls:
Species Specificity: human	WB : MCF-7 cells, HeLa cells, HepG2 cells, human colon tissue, Jurkat cells, PC-3 cells
Note-IHC: suggested antigen retrieval with TE buffer pH 9.0; (*) Alternatively, antigen retrieval may be performed with citrate buffer pH 6.0	IHC : human stomach cancer tissue,
	IF/ICC : A549 cells,

Background Information

PPP1R14A, also named as CPI17, belongs to the protein phosphatase 1 (PP1) inhibitor family. This protein is an inhibitor of smooth muscle myosin phosphatase, and has higher inhibitory activity when phosphorylated. Inhibition of myosin phosphatase leads to increased myosin phosphorylation and enhanced smooth muscle contraction. CPI17 has two isoforms: CPI-17alpha (17 kDa) and CPI-17beta (13 kDa).

Storage

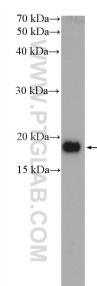
Storage:
Store at -20°C. Stable for one year after shipment.
Storage Buffer:
PBS with 0.02% sodium azide and 50% glycerol pH 7.3.
Aliquoting is unnecessary for -20°C storage

*** 20ul sizes contain 0.1% BSA

For technical support and original validation data for this product please contact:
T: 1 (888) 4PTGLAB (1-888-478-4522) (toll free in USA), or 1(312) 455-8498 (outside USA)
E: proteintech@ptglab.com
W: ptglab.com

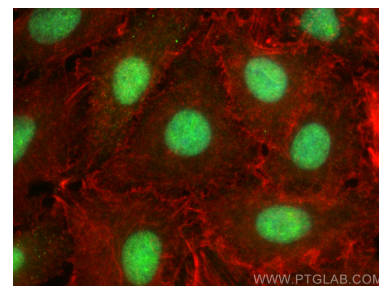
This product is exclusively available under Proteintech Group brand and is not available to purchase from any other manufacturer.

Selected Validation Data



MCF-7 cells were subjected to SDS PAGE followed by western blot with 11658-1-AP (CPI17 antibody) at dilution of 1:300 incubated at room temperature for 1.5 hours.

Immunohistochemical analysis of paraffin-embedded human stomach cancer tissue slide using 11658-1-AP (CPI17 antibody) at dilution of 1:100 (under 20x lens). Heat mediated antigen retrieval with Sodium Citrate buffer (pH 6.0).



Immunofluorescent analysis of (4% PFA) fixed A549 cells using CPI17 antibody (11658-1-AP) at dilution of 1:800 and CoraLite®488-Conjugated Goat Anti-Rabbit IgG(H+L) (SA00013-2), CL594-phalloidin (red).