

For Research Use Only

# MALT1 Polyclonal antibody

Catalog Number: 11660-1-AP

Featured Product

9 Publications



## Basic Information

### Catalog Number:

11660-1-AP

### Size:

150ul, Concentration: 400 ug/ml by Nanodrop and 260 ug/ml by Bradford method using BSA as the standard;

### Source:

Rabbit

### Isotype:

IgG

### Immunogen Catalog Number:

AG2182

### GenBank Accession Number:

BC030143

### GeneID (NCBI):

10892

### UNIPROT ID:

Q9UDY8

### Full Name:

mucosa associated lymphoid tissue lymphoma translocation gene 1

### Calculated MW:

824 aa, 92 kDa

### Observed MW:

92-100 kDa

### Purification Method:

Antigen affinity purification

### Recommended Dilutions:

WB 1:500-1:1000

IHC 1:20-1:200

IF/ICC 1:200-1:800

## Applications

### Tested Applications:

WB, IHC, IF/ICC, ELISA

### Cited Applications:

WB, IHC, IF, IP, CoIP

### Species Specificity:

human, mouse, rat

### Cited Species:

human, mouse, rat

**Note-IHC: suggested antigen retrieval with TE buffer pH 9.0; (\*) Alternatively, antigen retrieval may be performed with citrate buffer pH 6.0**

### Positive Controls:

WB : HeLa cells, HEK-293 cells, mouse testis tissue

IHC : human lymphoma tissue,

IF/ICC : HepG2 cells,

## Background Information

Mucosa-associated lymphoid tissue lymphoma translocation protein 1 belongs to caspase-like protein superfamily. MALT1 plays a potential role in the regulation of apoptosis and induces NFκB activation and required for the normal development of B cells and for the activation of the IKK complex. It acts as a caspase and mediates additional functions related to T cell activation, cleaving both the ubiquitin editing enzyme, TNFAIP3, and the C terminus of BCL10. It has two isoforms. Researches showed that inhibition of MALT1 blocks A20 and BCL10 cleavage, reduces NFκB activity, and decreases the expression of NFκB targets BCLXL.

## Notable Publications

Author	Pubmed ID	Journal	Application
Zhenglin Chang	35246671	Food Funct	IHC
Ke-Hung Tsui	33802402	Biomedicines	IHC
Zi-Mei Peng	36603698	Arch Biochem Biophys	WB

## Storage

### Storage:

Store at -20°C. Stable for one year after shipment.

### Storage Buffer:

PBS with 0.02% sodium azide and 50% glycerol pH 7.3.

Aliquoting is unnecessary for -20°C storage

\*\*\* 20ul sizes contain 0.1% BSA

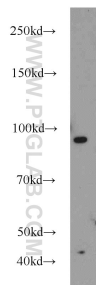
For technical support and original validation data for this product please contact:

T: 1 (888) 4PTGLAB (1-888-478-4522) (toll free in USA), or 1(312) 455-8498 (outside USA)

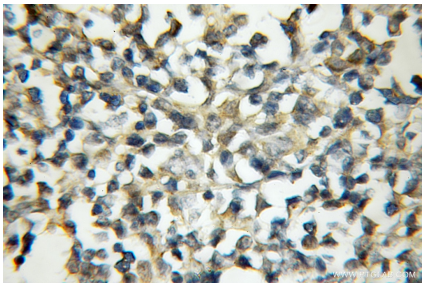
E: proteintech@ptglab.com  
W: ptglab.com

This product is exclusively available under Proteintech Group brand and is not available to purchase from any other manufacturer.

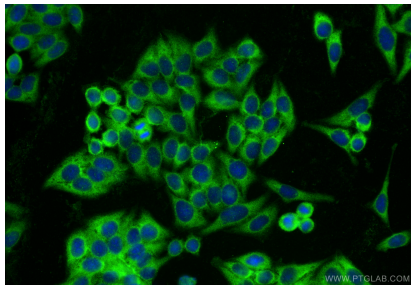
## Selected Validation Data



HeLa cells were subjected to SDS PAGE followed by western blot with 11660-1-AP (MALT1 antibody) at dilution of 1:600 incubated at room temperature for 1.5 hours.



Immunohistochemical analysis of paraffin-embedded human lymphoma using 11660-1-AP (MALT1 antibody) at dilution of 1:50 (under 10x lens).



Immunofluorescent analysis of (-20°C Ethanol) fixed HepG2 cells using MALT1 antibody (11660-1-AP) at dilution of 1:400 and CoraLite®488-Conjugated Goat Anti-Rabbit IgG(H+L) (SA00013-2).