

For Research Use Only

RRM2 Polyclonal antibody

Catalog Number: 11661-1-AP **15 Publications**



Basic Information

Catalog Number: 11661-1-AP	GenBank Accession Number: BC030154	Purification Method: Antigen affinity purification
Size: 150ul, Concentration: 500 µg/ml by Nanodrop;	GeneID (NCBI): 6241	Recommended Dilutions: WB 1:1000-1:6000 IP 0.5-4.0 ug for 1.0-3.0 mg of total protein lysate IHC 1:20-1:200 IF 1:200-1:800
Source: Rabbit	Full Name: ribonucleotide reductase M2 polypeptide	
Isotype: IgG	Calculated MW: 389 aa, 45 kDa	
Immunogen Catalog Number: AG2203	Observed MW: 45 kDa	

Applications

Tested Applications: FC, IF, IHC, IP, WB, ELISA	Positive Controls: WB : HeLa cells, A431 cells, HUVEC cells, K-562 cells IP : K-562 cells, IHC : human tonsillitis tissue, IF : HepG2 cells,
Cited Applications: CoIP, IF, IHC, WB	
Species Specificity: human	
Cited Species: human, chicken	

Note-IHC: suggested antigen retrieval with TE buffer pH 9.0; (*) Alternatively, antigen retrieval may be performed with citrate buffer pH 6.0

Background Information

Ribonucleotide reductase M2 subunit is one of two subunits that constitute ribonucleotide reductase, the enzyme that catalyzes the conversion of ribonucleotide 5'-diphosphates into 2'-deoxyribonucleotides, a rate-limiting step in the production of 2'-deoxyribonucleoside 5'-diphosphates (dNTP) required for DNA synthesis and repair that is required for DNA synthesis and repair [PMID:20825972, 19250552]. RRM2 is only expressed during the late G1/early S phase, and degraded in late S phase, and the activity of RNR, and therefore DNA synthesis and cell proliferation, is controlled during the cell cycle by the synthesis and degradation of RRM2 subunit [PMID:3894352].

Notable Publications

Author	Pubmed ID	Journal	Application
Qiao Song	36243980	Nucleic Acids Res	WB, CoIP
Tingbo Ye	35677150	Front Oncol	IHC
Binshan Shi	29587790	Virology	WB

Storage

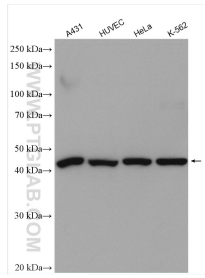
Storage:
Store at -20°C. Stable for one year after shipment.
Storage Buffer:
PBS with 0.02% sodium azide and 50% glycerol pH 7.3.
Aliquoting is unnecessary for -20°C storage

*** 20ul sizes contain 0.1% BSA

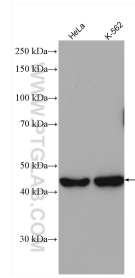
For technical support and original validation data for this product please contact:
T: 1 (888) 4PTGLAB (1-888-478-4522) (toll free in USA), or 1(312) 455-8498 (outside USA)
E: proteintech@ptglab.com
W: ptglab.com

This product is exclusively available under Proteintech Group brand and is not available to purchase from any other manufacturer.

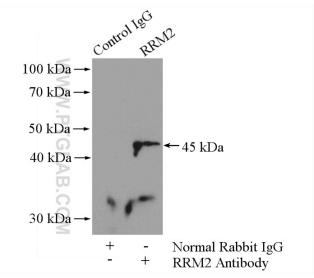
Selected Validation Data



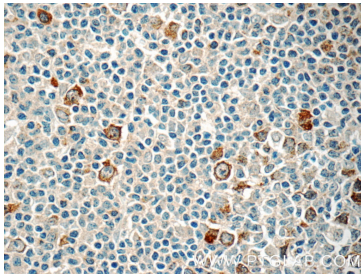
Various lysates were subjected to SDS PAGE followed by western blot with 11661-1-AP (RRM2 antibody) at dilution of 1:5000 incubated at room temperature for 1.5 hours.



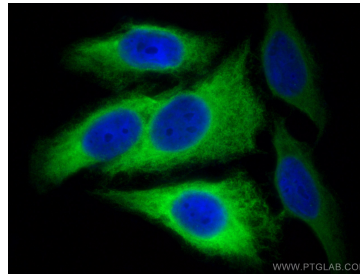
Various lysates were subjected to SDS PAGE followed by western blot with 11661-1-AP (RRM2 antibody) at dilution of 1:3000 incubated at room temperature for 1.5 hours.



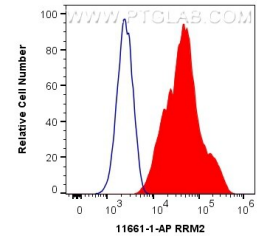
IP Result of anti-RRM2 (IP:11661-1-AP, 4ug; Detection:11661-1-AP 1:500) with K-562 cells lysate 1200ug.



Immunohistochemical analysis of paraffin-embedded human tonsillitis tissue slide using 11661-1-AP (RRM2 Antibody) at dilution of 1:50 (under 40x lens).



Immunofluorescent analysis of (-20°C Methanol) fixed HepG2 cells using RRM2 antibody (11661-1-AP) at dilution of 1:400 and CoraLite®488-Conjugated AffiniPure Goat Anti-Rabbit IgG(H+L).



1X10⁶ HepG2 cells were intracellularly stained with 0.4 ug Anti-Human RRM2 (11661-1-AP) and CoraLite®488-Conjugated AffiniPure Goat Anti-Rabbit IgG(H+L) at dilution 1:1000 (red), or 0.4 ug Isotype Control. Cells were fixed with 4% PFA and permeabilized with Flow Cytometry Perm Buffer (PF00011-C).