

For Research Use Only

WSB1 Polyclonal antibody

Catalog Number: 11666-1-AP **5 Publications**



Basic Information

| | | |
|--|--|--|
| Catalog Number: 11666-1-AP | GenBank Accession Number: BC021110 | Purification Method: Antigen affinity purification |
| Size: 150ul , Concentration: 373 µg/ml by Nanodrop and 373 µg/ml by Bradford method using BSA as the standard; | GeneID (NCBI): 26118 | Recommended Dilutions: WB 1:1000-1:6000 IHC 1:50-1:500 IF 1:50-1:500 |
| Source: Rabbit | Full Name: WD repeat and SOCS box-containing 1 | |
| Isotype: IgG | Calculated MW: 421 aa, 47 kDa | |
| Immunogen Catalog Number: AG2211 | Observed MW: 56 kDa | |

Applications

| | |
|---|--|
| Tested Applications: IF, IHC, WB, ELISA | Positive Controls: WB : COLO 320 cells, HepG2 cells, SMMC-7721 cells IHC : human prostate cancer tissue, IF : HepG2 cells, |
| Cited Applications: IHC, WB | |
| Species Specificity: human | |
| Cited Species: human | |

Note-IHC: suggested antigen retrieval with TE buffer pH 9.0; (*) Alternatively, antigen retrieval may be performed with citrate buffer pH 6.0

Background Information

WSB1 (or SWIP1) gene encodes WD repeat and SOCS box-containing protein 1, a member of the WD-protein subfamily. It contains several WD-repeats spanning most of the protein and an SOCS box in the C-terminus. Alternatively spliced transcript variants encoding 3 distinct isoforms have been found for this gene. WSB1 serves as a probable substrate-recognition component of a SCF-like ECS (Elongin-Cullin-SOCS-box protein) E3 ubiquitin ligase complex which mediates the ubiquitination and subsequent proteasomal degradation of target proteins. Ubiquitination and degradation of homeodomain-interacting protein kinase 2 by WSB1 has been reported (PMID: 15965468), initiated by the interaction of the two components (PMID: 18093972). WSB1 is also a part of an E3 ubiquitin ligase for the thyroid-hormone-activating type 2 iodothyronine deiodinase (D2) (PMID: 15965468).

Notable Publications

| Author | Pubmed ID | Journal | Application |
|--------------|-----------|------------|-------------|
| Ji Cao | 26424695 | Cancer Res | WB |
| Jung Jin Kim | 26545811 | Genes Dev | WB |
| Jung Jin Kim | 27958289 | Cell Res | WB |

Storage

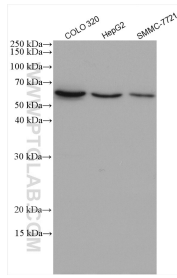
Storage:
Store at -20°C. Stable for one year after shipment.
Storage Buffer:
PBS with 0.02% sodium azide and 50% glycerol pH 7.3.
Aliquoting is unnecessary for -20°C storage

*** 20ul sizes contain 0.1% BSA

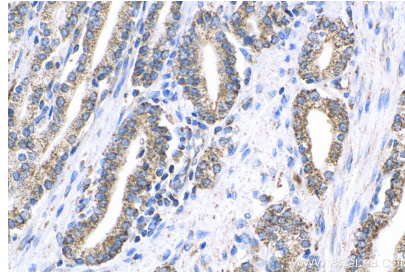
For technical support and original validation data for this product please contact:
T: 1 (888) 4PTGLAB (1-888-478-4522) (toll free in USA), or 1(312) 455-8498 (outside USA)
E: proteintech@ptglab.com
W: ptglab.com

This product is exclusively available under Proteintech Group brand and is not available to purchase from any other manufacturer.

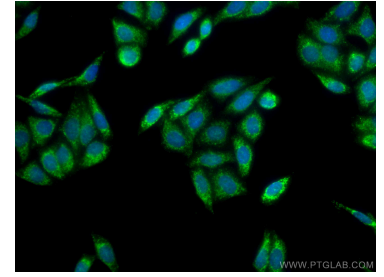
Selected Validation Data



Various lysates were subjected to SDS PAGE followed by western blot with 11666-1-AP (WSB1 antibody) at dilution of 1:3000 incubated at room temperature for 1.5 hours.



Immunohistochemical analysis of paraffin-embedded human prostate cancer tissue slide using 11666-1-AP (WSB1 antibody) at dilution of 1:200 (under 40x lens). Heat mediated antigen retrieval with Tris-EDTA buffer (pH 9.0).



Immunofluorescent analysis of (4% PFA) fixed HepG2 cells using WSB1 antibody (11666-1-AP) at dilution of 1:200 and CoraLite®488-Conjugated AffiniPure Goat Anti-Rabbit IgG(H+L).