

For Research Use Only

# CARHSP1 Polyclonal antibody, PBS Only

Catalog Number: 11672-1-PBS

Featured Product



## Basic Information

**Catalog Number:**

11672-1-PBS

**Size:**

100ug, Concentration: 1 mg/ml by Nanodrop;

**Source:**

Rabbit

**Isotype:**

IgG

**Immunogen Catalog Number:**

AG2265

**GenBank Accession Number:**

BC003366

**GeneID (NCBI):**

23589

**UNIPROT ID:**

Q9Y2V2

**Full Name:**

calcium regulated heat stable protein 1, 24kDa

**Calculated MW:**

147 aa, 16 kDa

**Observed MW:**

~22 kDa

**Purification Method:**

Antigen affinity purification

## Applications

**Tested Applications:**

WB, Indirect ELISA

**Species Specificity:**

human, mouse, rat

## Background Information

CARHSP1 (calcium-regulated heat-stable protein 1, a 24 kDa protein also known as CRHSP-24) is a ubiquitously expressed phosphoprotein that is comprised of 147 amino acids with nearly 14% proline (PMID: 21990353, 30257675). CARHSP1 was discovered as a biomarker for diabetic retinopathy and as a regulator of TNF- $\alpha$  mRNA stability in macrophages (PMID: 21078874). CARHSP1 may be involved in oxidative stress via traffic between stress granules and processing bodies (PMID: 21177848).

## Storage

**Storage:**

Store at -80°C.

**Storage Buffer:**

PBS only, pH7.3

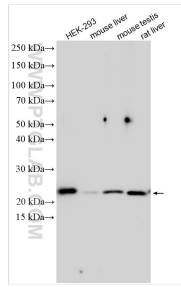
For technical support and original validation data for this product please contact:

T: 1 (888) 4PTGLAB (1-888-478-4522) (toll free in USA), or 1(312) 455-8498 (outside USA)

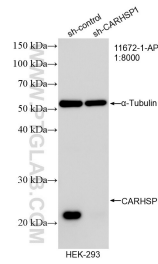
E: [proteintech@ptglab.com](mailto:proteintech@ptglab.com)  
W: [ptglab.com](http://ptglab.com)

This product is exclusively available under Proteintech Group brand and is not available to purchase from any other manufacturer.

## Selected Validation Data



Various lysates were subjected to SDS PAGE followed by western blot with 11672-1-AP (CARHSP1 antibody) at dilution of 1:1500 incubated at room temperature for 1.5 hours. This data was developed using the same antibody clone with 11672-1-PBS in a different storage buffer formulation.



WB result of CARHSP1 antibody (11672-1-AP; 1:8000; incubated at room temperature for 1.5 hours) with sh-Control and sh-CARHSP1 transfected HEK-293 cells. This data was developed using the same antibody clone with 11672-1-PBS in a different storage buffer formulation.