

For Research Use Only

PDLIM1/CLP36 Polyclonal antibody

Catalog Number: 11674-1-AP

Featured Product

7 Publications



Basic Information

Catalog Number:

11674-1-AP

Size:

150ul, Concentration: 600 µg/ml by Nanodrop and 600 µg/ml by Bradford method using BSA as the standard;

Source:

Rabbit

Isotype:

IgG

Immunogen Catalog Number:

AG2274

GenBank Accession Number:

BC000915

GeneID (NCBI):

9124

Full Name:

PDZ and LIM domain 1

Calculated MW:

329 aa, 36 kDa

Observed MW:

36 kDa

Purification Method:

Antigen affinity purification

Recommended Dilutions:

WB 1:1000-1:6000

IP 0.5-4.0 µg for 1.0-3.0 mg of total

protein lysate

IHC 1:20-1:200

IF 1:200-1:800

Applications

Tested Applications:

FC, IF, IHC, IP, WB, ELISA

Cited Applications:

IF, IHC, WB

Species Specificity:

human, mouse, rat

Cited Species:

human, rat, mouse

Note-IHC: suggested antigen retrieval with TE buffer pH 9.0; (*) Alternatively, antigen retrieval may be performed with citrate buffer pH 6.0

Positive Controls:

WB: C2C12 cells, human lung tissue, human ileum tissue, mouse heart tissue, mouse lung

IP: mouse heart tissue,

IHC: human pancreas cancer tissue,

IF: MCF-7 cells,

Background Information

PDLIM1, also named as CLIM1, CLP-36, CLP36, hCLIM1 and Elfin, is a member of the actinin-associated LIM protein (ALP)/enigma protein family, plays a role in neurite outgrowth in the peripheral nervous system. It is a cytoskeletal protein that may act as an adapter that brings other proteins (like kinases) to the cytoskeleton. PDLIM1 and PALLD formed a complex in the dorsal root ganglion (DRG) and PDLIM1 and PALLD were colocalized in the neurites and cell bodies of primary DRG neurons. PDLIM1 may interact with PALLD to influence neurite outgrowth during sciatic nerve regeneration. (PMID: 20381583)

Notable Publications

Author	Pubmed ID	Journal	Application
Yusha Wang	31750630	EMBO Rep	WB
Chao Liu	26986811	Autophagy	WB, IF
Yongliang Shang	27310465	Autophagy	WB

Storage

Storage:

Store at -20°C. Stable for one year after shipment.

Storage Buffer:

PBS with 0.02% sodium azide and 50% glycerol pH 7.3.

Aliquoting is unnecessary for -20°C storage

*** 20ul sizes contain 0.1% BSA

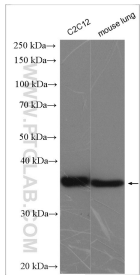
For technical support and original validation data for this product please contact:

T: 1 (888) 4PTGLAB (1-888-478-4522) (toll free in USA), or 1(312) 455-8498 (outside USA)

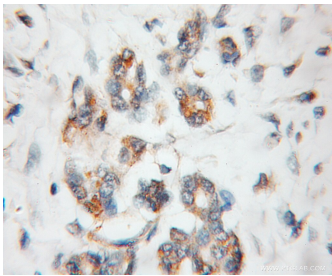
E: proteintech@ptglab.com
W: ptglab.com

This product is exclusively available under Proteintech Group brand and is not available to purchase from any other manufacturer.

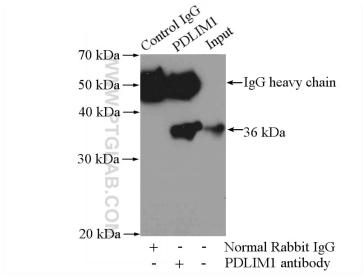
Selected Validation Data



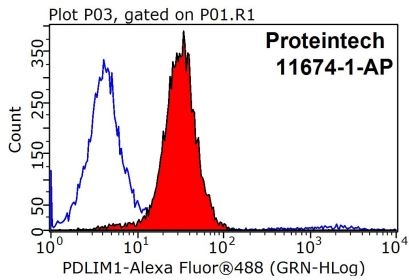
Various lysates were subjected to SDS PAGE followed by western blot with 11674-1-AP (PDLIM1/CLP36 antibody) at dilution of 1:3000 incubated at room temperature for 1.5 hours.



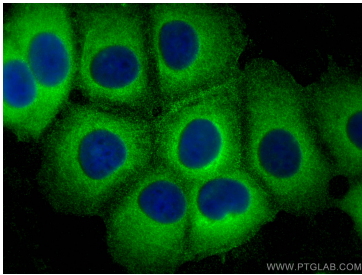
Immunohistochemical analysis of paraffin-embedded human pancreas cancer using 11674-1-AP (PDLIM1/CLP36 antibody) at dilution of 1:50 (under 10x lens).



IP Result of anti-PDLIM1/CLP36 (IP:11674-1-AP, 3ug; Detection:11674-1-AP 1:600) with mouse heart tissue lysate 4000ug.



1X10⁶ MCF-7 cells were stained with 0.2ug PDLIM1/CLP36 antibody (11674-1-AP, red) and control antibody (blue). Fixed with 90% MeOH blocked with 3% BSA (30 min). Alexa Fluor 488-conjugated AffiniPure Goat Anti-Rabbit IgG(H+L) with dilution 1:1000.



Immunofluorescent analysis of (-20°C Methanol) fixed MCF-7 cells using PDLIM1/CLP36 antibody (11674-1-AP) at dilution of 1:400 and CoraLite®488-Conjugated AffiniPure Goat Anti-Rabbit IgG(H+L).