

For Research Use Only

UBE2D1/2/3/4 Polyclonal antibody

Catalog Number: 11677-1-AP

12 Publications



Basic Information

Catalog Number:

11677-1-AP

Size:

150ul, Concentration: 867 ug/ml by Bradford method using BSA as the standard;

Source:

Rabbit

Isotype:

IgG

Immunogen Catalog Number:

AG2278

GenBank Accession Number:

BC003395

GeneID (NCBI):

7323

UNIPROT ID:

P61077

Full Name:

ubiquitin-conjugating enzyme E2D 3 (UBC4/5 homolog, yeast)

Calculated MW:

17 kDa

Observed MW:

17 kDa

Purification Method:

Antigen affinity purification

Recommended Dilutions:

WB 1:1000-1:4000

IHC 1:500-1:3000

Applications

Tested Applications:

WB, IHC, ELISA

Cited Applications:

WB, IHC

Species Specificity:

human, mouse, rat

Cited Species:

human, mouse, hamster

Note-IHC: suggested antigen retrieval with TE buffer pH 9.0; (*) Alternatively, antigen retrieval may be performed with citrate buffer pH 6.0

Positive Controls:

WB: HEK-293 cells, mouse brain tissue, Hela cells, Jurkat cells, rat brain tissue, mouse kidney tissue, rat kidney tissue

IHC: human prostate cancer tissue,

Background Information

Ubiquitination is a post-translational modification pathway or is part of the specific protein-degradation pathway by the 26S proteasome. Ubiquitination of a target protein involves multistep enzymatic reaction catalyzed by a cascade of enzymes including Ub-activating enzymes (E1s), Ub-conjugating enzymes (E2s) and Ub ligases (E3s) (PMID: 23542885). UBE2D family, which has 4 members named as UBE2D1/2/3/4, is an E2 ubiquitin-conjugating enzyme family in the ubiquitin-proteasome system. This antibody can recognize all the four members of UBE2D due to the high homology.

Notable Publications

Author	Pubmed ID	Journal	Application
Zheng Xu	35411229	Am J Cancer Res	WB
Zhenjiang Pan	34195079	Front Oncol	IHC
Ganiou Assani	31244309	Asian Pac J Cancer Prev	WB

Storage

Storage:

Store at -20°C. Stable for one year after shipment.

Storage Buffer:

PBS with 0.02% sodium azide and 50% glycerol pH 7.3.

Aliquoting is unnecessary for -20°C storage

*** 20ul sizes contain 0.1% BSA

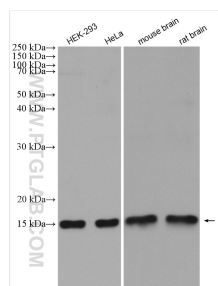
For technical support and original validation data for this product please contact:

T: 1 (888) 4PTGLAB (1-888-478-4522) (toll free in USA), or 1(312) 455-8498 (outside USA)

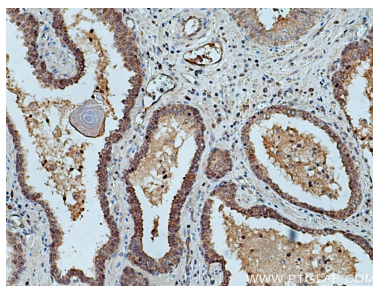
E: proteintech@ptglab.com
W: ptglab.com

This product is exclusively available under Proteintech Group brand and is not available to purchase from any other manufacturer.

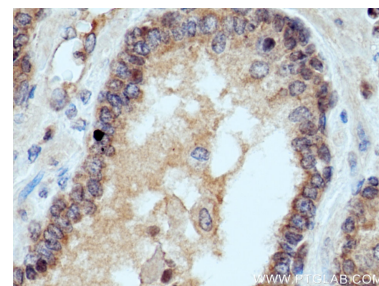
Selected Validation Data



Various lysates were subjected to SDS PAGE followed by western blot with 11677-1-AP (UBE2D1/2/3/4 antibody) at dilution of 1:2000 incubated at room temperature for 1.5 hours.



Immunohistochemical analysis of paraffin-embedded human prostate cancer tissue slide using 11677-1-AP (UBE2D1/2/3/4 antibody) at dilution of 1:1500 (under 10x lens). Heat mediated antigen retrieval with Tris-EDTA buffer (pH 9.0).



Immunohistochemical analysis of paraffin-embedded human prostate cancer tissue slide using 11677-1-AP (UBE2D1/2/3/4 antibody) at dilution of 1:1500 (under 40x lens). Heat mediated antigen retrieval with Tris-EDTA buffer (pH 9.0).