

For Research Use Only

Ferritin heavy chain Polyclonal antibody, PBS Only

Catalog Number: 11682-1-PBS

Featured Product



Basic Information

Catalog Number:

11682-1-PBS

Size:

100ug, Concentration: 1 mg/ml by Nanodrop;

Source:

Rabbit

Isotype:

IgG

Immunogen Catalog Number:

AG2290

GenBank Accession Number:

BC000857

GeneID (NCBI):

2495

UNIPROT ID:

P02794

Full Name:

ferritin, heavy polypeptide 1

Calculated MW:

183 aa, 21 kDa

Observed MW:

21 kDa

Purification Method:

Antigen affinity purification

Applications

Tested Applications:

WB, IHC, IF/ICC, IP, Indirect ELISA

Species Specificity:

human, mouse, rat

Background Information

Ferritin heavy chain (FTH1, ferritin, heavy polypeptide 1), as a 21 kDa subunit of the ferritin complex, exhibits ferroxidase activity, which serves an essential role in catalyzing the conversion of the ferrous ions (Fe²⁺) to the ferric form (Fe³⁺). FTH1 regulates angiogenesis during inflammation and malignancy by binding to high molecular weight kininogen (HKa) and blocking its anti-angiogenic activity on endothelial cells in vitro and in vivo (PMID: 33260500). FTH1 has been shown to protect proximal tube epithelial cells and kidneys against the activity of free iron in reactive oxygen species generation. FTH1 plays an important role in the maintenance of the cellular iron balance in ferroptosis.

Storage

Storage:

Store at -80°C.

Storage Buffer:

PBS only, pH7.3

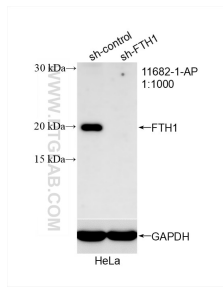
For technical support and original validation data for this product please contact:

T: 1 (888) 4PTGLAB (1-888-478-4522) (toll free in USA), or 1(312) 455-8498 (outside USA)

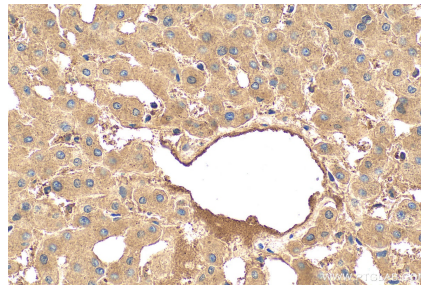
E: proteintech@ptglab.com
W: ptglab.com

This product is exclusively available under Proteintech Group brand and is not available to purchase from any other manufacturer.

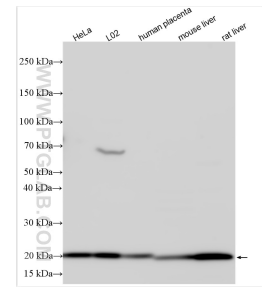
Selected Validation Data



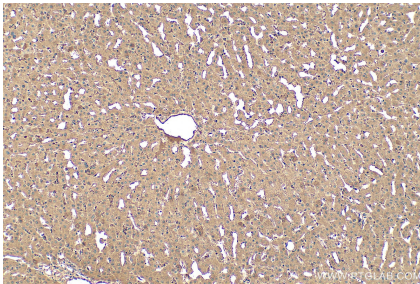
WB result of Ferritin heavy chain antibody (11682-1-AP; 1:1000; incubated at room temperature for 1.5 hours) with sh-Control and sh-Ferritin heavy chain transfected HeLa cells. This data was developed using the same antibody clone with 11682-1-PBS in a different storage buffer formulation.



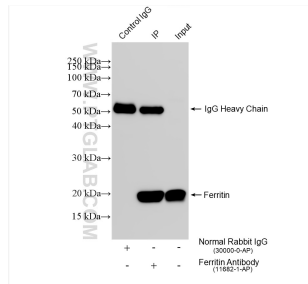
Immunohistochemical analysis of paraffin-embedded human liver tissue slide using 11682-1-AP (Ferritin heavy chain antibody) at dilution of 1:200 (under 40x lens). Heat mediated antigen retrieval with Tris-EDTA buffer (pH 9.0). This data was developed using the same antibody clone with 11682-1-PBS in a different storage buffer formulation.



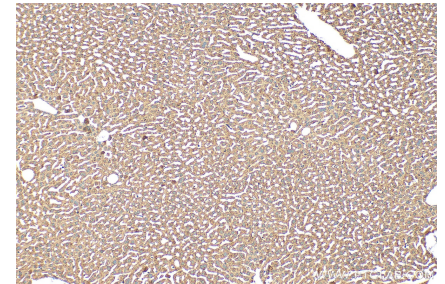
Various lysates were subjected to SDS PAGE followed by western blot with 11682-1-AP (Ferritin heavy chain antibody) at dilution of 1:6000 incubated at room temperature for 1.5 hours. This data was developed using the same antibody clone with 11682-1-PBS in a different storage buffer formulation.



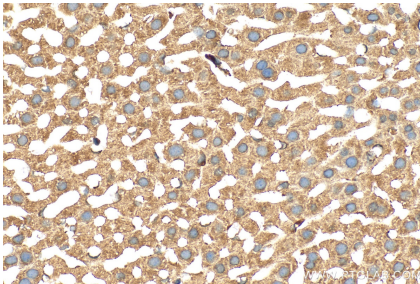
Immunohistochemical analysis of paraffin-embedded human liver tissue slide using 11682-1-AP (Ferritin heavy chain antibody) at dilution of 1:200 (under 10x lens). Heat mediated antigen retrieval with Tris-EDTA buffer (pH 9.0). This data was developed using the same antibody clone with 11682-1-PBS in a different storage buffer formulation.



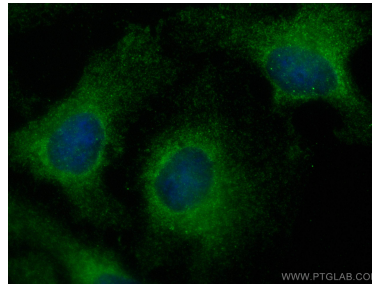
IP result of anti-Ferritin heavy chain (IP:11682-1-AP, 4ug; Detection:11682-1-AP 1:3000) with HeLa cells lysate 1600 ug. This data was developed using the same antibody clone with 11682-1-PBS in a different storage buffer formulation.



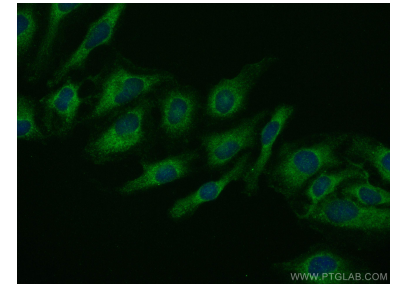
Immunohistochemical analysis of paraffin-embedded mouse liver tissue slide using 11682-1-AP (Ferritin heavy chain antibody) at dilution of 1:200 (under 10x lens). Heat mediated antigen retrieval with Tris-EDTA buffer (pH 9.0). This data was developed using the same antibody clone with 11682-1-PBS in a different storage buffer formulation.



Immunohistochemical analysis of paraffin-embedded mouse liver tissue slide using 11682-1-AP (Ferritin heavy chain antibody) at dilution of 1:200 (under 40x lens). Heat mediated antigen retrieval with Tris-EDTA buffer (pH 9.0). This data was developed using the same antibody clone with 11682-1-PBS in a different storage buffer formulation.



Immunofluorescent analysis of (-20°C Ethanol) fixed HeLa cells using Ferritin heavy chain antibody (11682-1-AP) at dilution of 1:200 and CoraLite®488-Conjugated AffiniPure Goat Anti-Rabbit IgG(H+L) (SA00013-2). This data was developed using the same antibody clone with 11682-1-PBS in a different storage buffer formulation.



Immunofluorescent analysis of (-20°C Ethanol) fixed HeLa cells using Ferritin heavy chain antibody (11682-1-AP) at dilution of 1:200 and CoraLite®488-Conjugated AffiniPure Goat Anti-Rabbit IgG(H+L) (SA00013-2). This data was developed using the same antibody clone with 11682-1-PBS in a different storage buffer formulation.