

For Research Use Only

PLEK2 Polyclonal antibody

Catalog Number: 11685-1-AP

Featured Product

19 Publications



Basic Information

Catalog Number:

11685-1-AP

Size:

150ul, Concentration: 800 ug/ml by Nanodrop;

Source:

Rabbit

Isotype:

IgG

Immunogen Catalog Number:

AG2297

GenBank Accession Number:

BC001226

GeneID (NCBI):

26499

UNIPROT ID:

Q9NYTO

Full Name:

pleckstrin 2

Calculated MW:

353 aa, 40 kDa

Observed MW:

38-40 kDa

Purification Method:

Antigen affinity purification

Recommended Dilutions:

WB 1:500-1:2000

IHC 1:20-1:200

IF/ICC 1:50-1:500

Applications

Tested Applications:

WB, IHC, IF/ICC, FC (Intra), ELISA

Cited Applications:

WB, IHC, IF, IP, CoIP

Species Specificity:

human, mouse, rat

Cited Species:

human, mouse

Note-IHC: suggested antigen retrieval with TE buffer pH 9.0; (*) Alternatively, antigen retrieval may be performed with citrate buffer pH 6.0

Positive Controls:

WB : HT-29 cells, U2OS cells, Caco-2 cells, PC-3 cells

IHC : human pancreas cancer tissue, mouse spleen tissue

IF/ICC : HT-29 cells,

Background Information

PLEK2 belongs to the Pleckstrin homology domain family and is a 40-kDa protein containing the prototypic PH domains at its amino and carboxyl termini (PMID: 10419454). PLEK2 associates with membrane-bound phosphatidylinositols generated by phosphatidylinositol 3-kinase. PLEK2 interacts with the actin cytoskeleton to induce cell spreading.

Notable Publications

Author	Pubmed ID	Journal	Application
Feng Wang	34601488	Cell Death Dis	WB,IHC
Baobing Zhao	29202466	J Clin Invest	WB,IHC
Yang Liu	34084215	Oncol Lett	WB,IHC

Storage

Storage:

Store at -20°C. Stable for one year after shipment.

Storage Buffer:

PBS with 0.02% sodium azide and 50% glycerol pH 7.3.

Aliquoting is unnecessary for -20°C storage

*** 20ul sizes contain 0.1% BSA

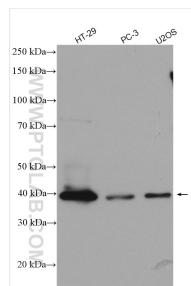
For technical support and original validation data for this product please contact:

T: 1 (888) 4PTGLAB (1-888-478-4522) (toll free in USA), or 1(312) 455-8498 (outside USA)

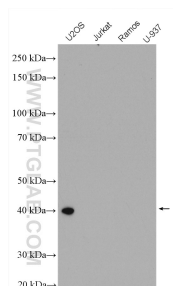
E: proteintech@ptglab.com
W: ptglab.com

This product is exclusively available under Proteintech Group brand and is not available to purchase from any other manufacturer.

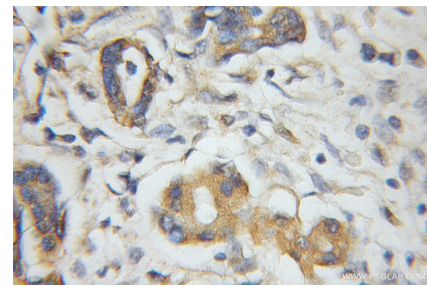
Selected Validation Data



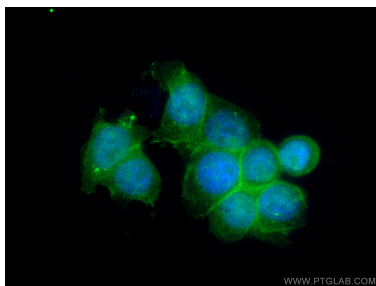
Various lysates were subjected to SDS PAGE followed by western blot with 11685-1-AP (PLEK2 antibody) at dilution of 1:1000 incubated at room temperature for 1.5 hours.



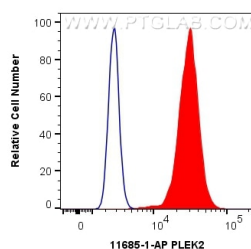
U2OS (positive), Jurkat, Ramos, and U-937 (negative) cells were subjected to SDS PAGE followed by western blot with 11685-1-AP (PLEK2 antibody) at dilution of 1:500 incubated at room temperature for 1.5 hours.



Immunohistochemical analysis of paraffin-embedded human pancreas cancer using 11685-1-AP (PLEK2 antibody) at dilution of 1:50 (under 10x lens).



Immunofluorescent analysis of (4% PFA) fixed HT-29 cells using PLEK2 antibody (11685-1-AP) at dilution of 1:200 and CoraLite®488-Conjugated AffiniPure Goat Anti-Rabbit IgG(H+L).



1X10⁶ HT-29 cells were intracellularly stained with 0.4 ug Anti-Human PLEK2 (11685-1-AP) and CoraLite®488-Conjugated AffiniPure Goat Anti-Rabbit IgG(H+L) at dilution 1:1000 (red), or 0.4 ug Rabbit IgG control Rabbit PolyAb (30000-O-AP, Clone:) (blue). Cells were fixed with 4% PFA and permeabilized with Flow Cytometry Perm Buffer (PF00011-C).