

For Research Use Only

PLEK2 Polyclonal antibody, PBS Only

Catalog Number: 11685-1-PBS

Featured Product



Basic Information

Catalog Number:

11685-1-PBS

Size:

100ug, Concentration: 1 mg/ml by Nanodrop;

Source:

Rabbit

Isotype:

IgG

Immunogen Catalog Number:

AG2297

GenBank Accession Number:

BC001226

GeneID (NCBI):

26499

UNIPROT ID:

Q9NYTO

Full Name:

pleckstrin 2

Calculated MW:

353 aa, 40 kDa

Observed MW:

38-40 kDa

Purification Method:

Antigen affinity purification

Applications

Tested Applications:

WB, IHC, IF/ICC, FC (Intra), IP, Indirect ELISA

Species Specificity:

human, mouse, rat

Background Information

PLEK2 belongs to the Pleckstrin homology domain family and is a 40-kDa protein containing the prototypic PH domains at its amino and carboxyl termini (PMID: 10419454). PLEK2 associates with membrane-bound phosphatidylinositols generated by phosphatidylinositol 3-kinase. PLEK2 interacts with the actin cytoskeleton to induce cell spreading.

Storage

Storage:

Store at -80°C.

Storage Buffer:

PBS only, pH7.3

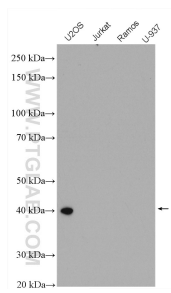
For technical support and original validation data for this product please contact:

T: 1 (888) 4PTGLAB (1-888-478-4522) (toll free in USA), or 1(312) 455-8498 (outside USA)

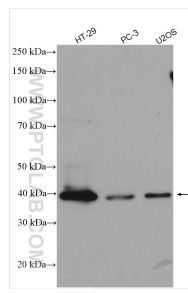
E: proteintech@ptglab.com
W: ptglab.com

This product is exclusively available under Proteintech Group brand and is not available to purchase from any other manufacturer.

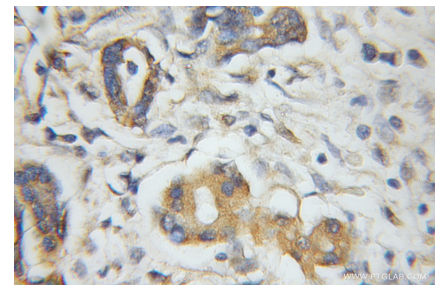
Selected Validation Data



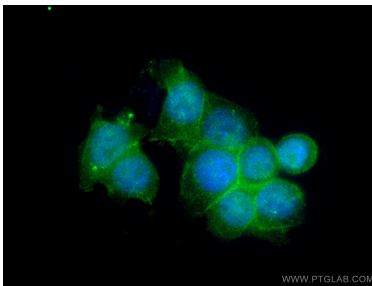
U2OS (positive), Jurkat, Ramos, and U-937 (negative) cells were subjected to SDS PAGE followed by western blot with 11685-1-AP (PLEK2 antibody) at dilution of 1:500 incubated at room temperature for 1.5 hours. This data was developed using the same antibody clone with 11685-1-PBS in a different storage buffer formulation.



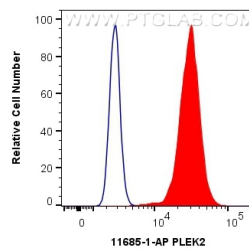
Various lysates were subjected to SDS PAGE followed by western blot with 11685-1-AP (PLEK2 antibody) at dilution of 1:1000 incubated at room temperature for 1.5 hours. This data was developed using the same antibody clone with 11685-1-PBS in a different storage buffer formulation.



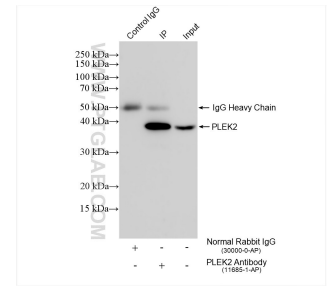
Immunohistochemical analysis of paraffin-embedded human pancreas cancer using 11685-1-AP (PLEK2 antibody) at dilution of 1:50 (under 10x lens). This data was developed using the same antibody clone with 11685-1-PBS in a different storage buffer formulation.



Immunofluorescent analysis of (4% PFA) fixed HT-29 cells using PLEK2 antibody (11685-1-AP) at dilution of 1:200 and CoraLite®488-Conjugated AffiniPure Goat Anti-Rabbit IgG(H+L). This data was developed using the same antibody clone with 11685-1-PBS in a different storage buffer formulation.



1X10⁶ HT-29 cells were intracellularly stained with 0.4 ug Anti-Human PLEK2 (11685-1-AP) and CoraLite®488-Conjugated AffiniPure Goat Anti-Rabbit IgG(H+L) at dilution 1:1000 (red), or 0.4 ug Rabbit IgG control Rabbit PolyAb (30000-0-AP, Clone:) (blue). Cells were fixed with 4% PFA and permeabilized with Flow Cytometry Perm Buffer (PF00011-C). This data was developed using the same antibody clone with 11685-1-PBS in a different storage buffer formulation.



IP result of anti-PLEK2 (IP:11685-1-AP, 4ug; Detection:11685-1-AP 1:1000) with HT-29 cells lysate 1760 ug. This data was developed using the same antibody clone with 11685-1-PBS in a different storage buffer formulation.