

For Research Use Only

# IPO13 Polyclonal antibody

Catalog Number: 11696-2-AP

Featured Product

5 Publications



## Basic Information

### Catalog Number:

11696-2-AP

### Size:

150ul, Concentration: 500 ug/ml by Nanodrop and 300 ug/ml by Bradford method using BSA as the standard;

### Source:

Rabbit

### Isotype:

IgG

### Immunogen Catalog Number:

AG2317

### GenBank Accession Number:

BC008194

### GeneID (NCBI):

9670

### UNIPROT ID:

O94829

### Full Name:

importin 13

### Calculated MW:

963 aa, 108 kDa

### Observed MW:

97 kDa

### Purification Method:

Antigen affinity purification

### Recommended Dilutions:

WB 1:1000-1:4000

IHC 1:50-1:500

IF/ICC 1:200-1:800

## Applications

### Tested Applications:

WB, IHC, IF/ICC, ELISA

### Cited Applications:

WB, IHC, IF, IP

### Species Specificity:

human, mouse, rat

### Cited Species:

human, mouse

**Note-IHC:** suggested antigen retrieval with **TE buffer pH 9.0; (\*) Alternatively, antigen retrieval may be performed with citrate buffer pH 6.0**

### Positive Controls:

**WB:** MCF-7 cells, human brain tissue, Neura-2a cells, mouse lung

**IHC:** human gliomas tissue,

**IF/ICC:** HeLa cells,

## Notable Publications

Author	Pubmed ID	Journal	Application
K A Gajewska	34625540	Nat Commun	WB,IF,IP
Katarzyna A Gajewska	35434231	Data Brief	WB
Katarzyna A Gajewska	36672214	Cells	WB

## Storage

### Storage:

Store at -20°C. Stable for one year after shipment.

### Storage Buffer:

PBS with 0.02% sodium azide and 50% glycerol pH 7.3.

Aliquoting is unnecessary for -20°C storage

\*\*\* 20ul sizes contain 0.1% BSA

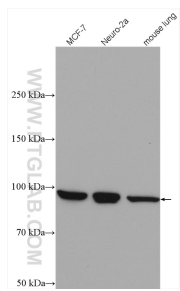
For technical support and original validation data for this product please contact:

T: 1 (888) 4PTGLAB (1-888-478-4522) (toll free in USA), or 1(312) 455-8498 (outside USA)

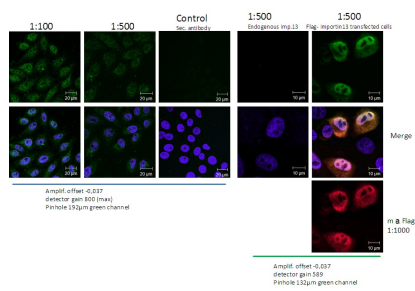
E: [proteintech@ptglab.com](mailto:proteintech@ptglab.com)  
W: [ptglab.com](http://ptglab.com)

This product is exclusively available under Proteintech Group brand and is not available to purchase from any other manufacturer.

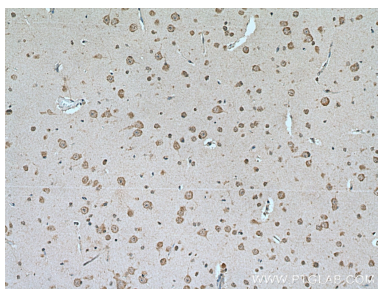
Selected Validation Data



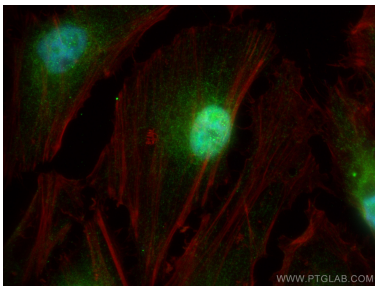
Various lysates were subjected to SDS PAGE followed by western blot with 11696-2-AP (IPO13 antibody) at dilution of 1:2000 incubated at room temperature for 1.5 hours.



IF result in HeLa cell from Dr. Ralph Kehlenbach showed Nuclear and Cytoplasmic stain.



Immunohistochemical analysis of paraffin-embedded human gliomas tissue slide using 11696-2-AP (IPO13 antibody) at dilution of 1:200 (under 10x lens). Heat mediated antigen retrieval with Tris-EDTA buffer (pH 9.0).



Immunofluorescent analysis of (4% PFA) fixed HeLa cells using IPO13 antibody (11696-2-AP) at dilution of 1:400 and CoraLite®488-Conjugated AffiniPure Goat Anti-Rabbit IgG(H+L) (SA00013-2), CL594-phalloidin (red).