

For Research Use Only

TSFM Polyclonal antibody

Catalog Number: 11701-1-AP



Basic Information

Catalog Number: 11701-1-AP	GenBank Accession Number: BC022862	Purification Method: Antigen affinity purification
Size: 150ul , Concentration: 200 µg/ml by Nanodrop and 173 µg/ml by Bradford method using BSA as the standard;	GeneID (NCBI): 10102	Recommended Dilutions: WB 1:1000-1:4000 IHC 1:50-1:500 IF 1:50-1:500
Source: Rabbit	Full Name: Ts translation elongation factor, mitochondrial	
Isotype: IgG	Calculated MW: 35 kDa	
Immunogen Catalog Number: AG2308	Observed MW: 35 kDa	

Applications

Tested Applications:

IF, IHC, WB, ELISA

Species Specificity:

human

Note-IHC: suggested antigen retrieval with TE buffer pH 9.0; (*) Alternatively, antigen retrieval may be performed with citrate buffer pH 6.0

Positive Controls:

WB : HeLa cells, PC-3 cells, HEK-293 cells

IHC : human colon cancer tissue, human kidney tissue, human stomach cancer tissue

IF : HeLa cells,

Background Information

Storage

Storage:

Store at -20°C. Stable for one year after shipment.

Storage Buffer:

PBS with 0.02% sodium azide and 50% glycerol pH 7.3.

Aliquoting is unnecessary for -20°C storage

*** 20ul sizes contain 0.1% BSA

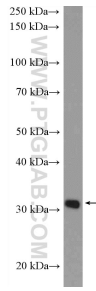
For technical support and original validation data for this product please contact:

T: 1 (888) 4PTGLAB (1-888-478-4522) (toll free in USA), or 1(312) 455-8498 (outside USA)

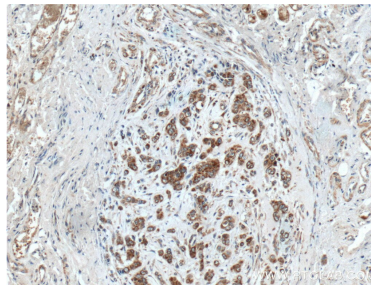
E: proteintech@ptglab.com
W: ptglab.com

This product is exclusively available under Proteintech Group brand and is not available to purchase from any other manufacturer.

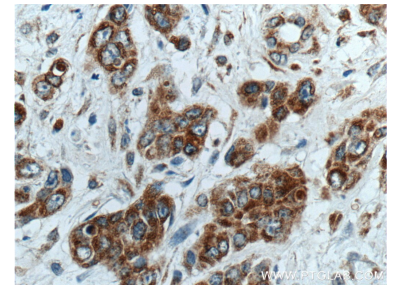
Selected Validation Data



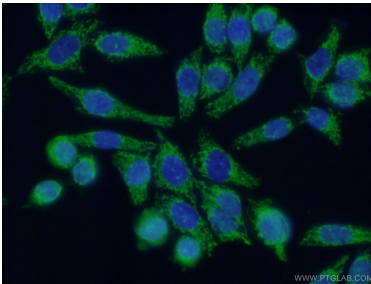
HeLa cells were subjected to SDS PAGE followed by western blot with 11701-1-AP (TSFM Antibody) at dilution of 1:2000 incubated at room temperature for 1.5 hours.



Immunohistochemical analysis of paraffin-embedded human colon cancer tissue slide using 11701-1-AP (TSFM antibody) at dilution of 1:200 (under 10x lens).



Immunohistochemical analysis of paraffin-embedded human colon cancer tissue slide using 11701-1-AP (TSFM antibody) at dilution of 1:200 (under 40x lens).



Immunofluorescent analysis of (10% Formaldehyde) fixed HeLa cells using 11701-1-AP (TSFM antibody) at dilution of 1:50 and Alexa Fluor 488-conjugated AffiniPure Goat Anti-Rabbit IgG(H+L).