

For Research Use Only

# BRE Polyclonal antibody

Catalog Number: 11702-1-AP

3 Publications



## Basic Information

### Catalog Number:

11702-1-AP

### Size:

150ul, Concentration: 400 ug/ml by Nanodrop and 233 ug/ml by Bradford method using BSA as the standard;

### Source:

Rabbit

### Isotype:

IgG

### Immunogen Catalog Number:

AG2256

### GenBank Accession Number:

BC001251

### GeneID (NCBI):

9577

### UNIPROT ID:

Q9NXR7

### Full Name:

brain and reproductive organ-expressed (TNFRSF1A modulator)

### Calculated MW:

383 aa, 44 kDa

### Observed MW:

40-44 kDa

### Purification Method:

Antigen affinity purification

### Recommended Dilutions:

WB 1:500-1:3000

IP 0.5-4.0 ug for 1.0-3.0 mg of total protein lysate

IHC 1:50-1:500

## Applications

### Tested Applications:

WB, IP, IHC, ELISA

### Cited Applications:

WB

### Species Specificity:

human, mouse

### Cited Species:

human

### Positive Controls:

WB: HeLa cells, HepG2 cells, NIH/3T3 cells

IP: HeLa cells,

IHC: human gliomas tissue,

**Note-IHC: suggested antigen retrieval with TE buffer pH 9.0; (\*) Alternatively, antigen retrieval may be performed with citrate buffer pH 6.0**

## Background Information

BRE, also named as BRCC45, is a death receptor-associated antiapoptotic protein, which is also involved in DNA-damage repair, and K63-specific deubiquitination. BRE and its XIAP-sustaining mechanism could represent novel targets for anti-cancer therapy. BRE may regulate TNF-alpha signaling through its interactions with TNFRSF1A. It plays a role in homeostasis or cellular differentiation in cells of neural, epithelial and germline origins. BRE gene has four isoforms with MW 42-47 kDa.

## Notable Publications

Author	Pubmed ID	Journal	Application
Xiaofei Zhang	28190767	Mol Cell	WB
Mu Yun	34975328	Int J Biol Sci	WB
Wang Bin B	19261749	Genes Dev	WB

## Storage

### Storage:

Store at -20°C. Stable for one year after shipment.

### Storage Buffer:

PBS with 0.02% sodium azide and 50% glycerol pH 7.3.

Aliquoting is unnecessary for -20°C storage

\*\*\* 20ul sizes contain 0.1% BSA

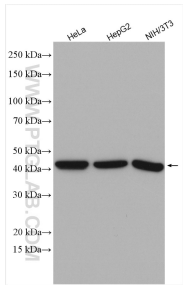
For technical support and original validation data for this product please contact:

T: 1 (888) 4PTGLAB (1-888-478-4522) (toll free in USA), or 1(312) 455-8498 (outside USA)

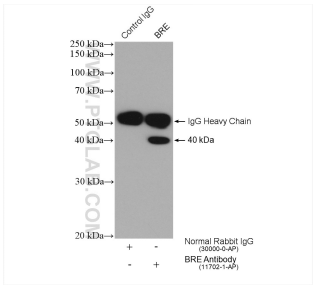
E: [proteintech@ptglab.com](mailto:proteintech@ptglab.com)  
W: [ptglab.com](http://ptglab.com)

This product is exclusively available under Proteintech Group brand and is not available to purchase from any other manufacturer.

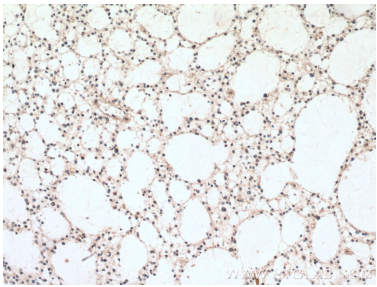
Selected Validation Data



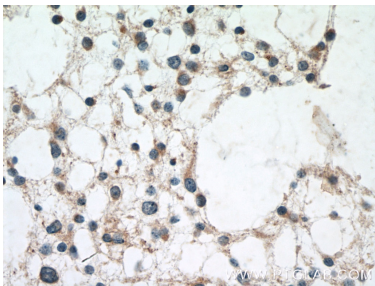
Various lysates were subjected to SDS PAGE followed by western blot with 11702-1-AP (BRE antibody) at dilution of 1:1500 incubated at room temperature for 1.5 hours.



IP result of anti-BRE (IP:11702-1-AP, 4ug; Detection:11702-1-AP 1:1000) with HeLa cells lysate 2320 ug.



Immunohistochemical analysis of paraffin-embedded human gliomas tissue slide using 11702-1-AP (BRE antibody) at dilution of 1:100 (under 10x lens. Heat mediated antigen retrieval with Tris-EDTA buffer (pH 9.0).



Immunohistochemical analysis of paraffin-embedded human gliomas tissue slide using 11702-1-AP (BRE antibody) at dilution of 1:100 (under 40x lens. Heat mediated antigen retrieval with Tris-EDTA buffer (pH 9.0).