

For Research Use Only

# MCM5 Polyclonal antibody

Catalog Number: 11703-1-AP **17 Publications**



## Basic Information

<b>Catalog Number:</b> 11703-1-AP	<b>GenBank Accession Number:</b> BC000142	<b>Purification Method:</b> Antigen affinity purification
<b>Size:</b> 150ul , Concentration: 700 µg/ml by Nanodrop;	<b>GeneID (NCBI):</b> 4174	<b>Recommended Dilutions:</b> WB 1:2000-1:16000 IP 0.5-4.0 ug for 1.0-3.0 mg of total protein lysate IHC 1:20-1:200 IF 1:50-1:500
<b>Source:</b> Rabbit	<b>UNIPROT ID:</b> P33992	
<b>Isotype:</b> IgG	<b>Full Name:</b> minichromosome maintenance complex component 5	
<b>Immunogen Catalog Number:</b> AG2271	<b>Calculated MW:</b> 82 kDa	
	<b>Observed MW:</b> 82-88 kDa	

## Applications

### Tested Applications:

WB, IP, IF, IHC, ELISA

### Cited Applications:

WB, IP, IF, RIP, IHC, CoIP

### Species Specificity:

human, mouse, rat

### Cited Species:

human, mouse

**Note-IHC: suggested antigen retrieval with TE buffer pH 9.0; (\*) Alternatively, antigen retrieval may be performed with citrate buffer pH 6.0**

### Positive Controls:

**WB:** A375 cells, HeLa cells, Jurkat cells, mouse thymus tissue, rat thymus tissue

**IP:** Jurkat cells,

**IHC:** human lymphoma tissue,

**IF:** HeLa cells,

## Background Information

Minichromosome maintenance, *S. Cerevisiae*, homolog of 5(MCM5), one component of the complex of MCM2-7, which is the putative replicative essential for once per cell cycle DNA replication initiation and elongation in eukaryotic cells. The MCM complex form a hexameric ring through the interaction surfaces of two neighboring subunits.

## Notable Publications

Author	Pubmed ID	Journal	Application
Yi-Zhen Liu	29151950	J Cancer	IHC
Wenchao Zhao	36428700	Cancers (Basel)	IHC
Xiaonan Sheng	34162418	J Exp Clin Cancer Res	IF, WB

## Storage

### Storage:

Store at -20°C. Stable for one year after shipment.

### Storage Buffer:

PBS with 0.02% sodium azide and 50% glycerol pH 7.3.

Aliquoting is unnecessary for -20°C storage

**\*\*\* 20ul sizes contain 0.1% BSA**

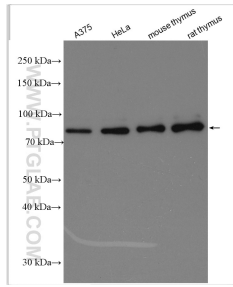
For technical support and original validation data for this product please contact:

T: 1 (888) 4PTGLAB (1-888-478-4522) (toll free in USA), or 1(312) 455-8498 (outside USA)

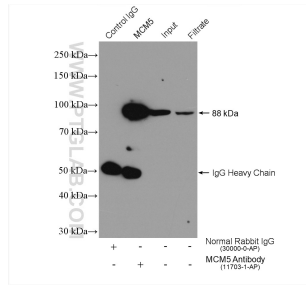
E: [proteintech@ptglab.com](mailto:proteintech@ptglab.com)  
W: [ptglab.com](http://ptglab.com)

**This product is exclusively available under Proteintech Group brand and is not available to purchase from any other manufacturer.**

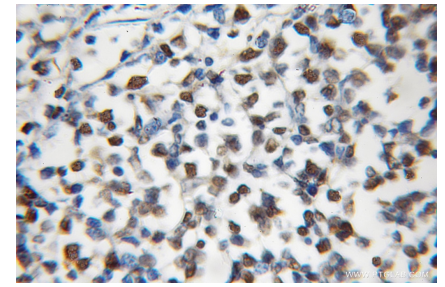
## Selected Validation Data



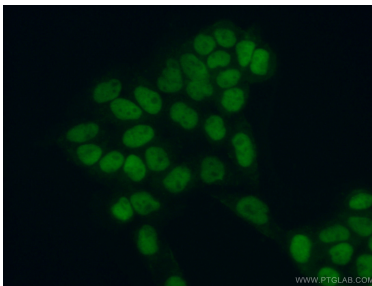
Various lysates were subjected to SDS PAGE followed by western blot with 11703-1-AP (MCM5 antibody) at dilution of 1:8000 incubated at room temperature for 1.5 hours.



IP result of anti-MCM5 (IP:11703-1-AP, 4ug; Detection:11703-1-AP 1:4000) with Jurkat cells lysate 2400 ug.



Immunohistochemical analysis of paraffin-embedded human lymphoma using 11703-1-AP (MCM5 antibody) at dilution of 1:100 (under 10x lens).



Immunofluorescent analysis of (4% PFA) fixed HeLa cells using 11703-1-AP (MCM5 antibody) at dilution of 1:50 and Alexa Fluor 488-conjugated AffiniPure Goat Anti-Rabbit IgG(H+L).



Immunofluorescent analysis of (4% PFA) fixed HeLa cells using MCM5 antibody (11703-1-AP) at dilution of 1:800 and CoraLite@488-Conjugated AffiniPure Goat Anti-Rabbit IgG(H+L).