

For Research Use Only

MCM5 Polyclonal antibody, PBS Only

Catalog Number:11703-1-PBS



Basic Information

Catalog Number:

11703-1-PBS

Size:

100ug , Concentration: 1 mg/ml by Nanodrop;

Source:

Rabbit

Isotype:

IgG

Immunogen Catalog Number:

AG2271

GenBank Accession Number:

BC000142

GeneID (NCBI):

4174

UNIPROT ID:

P33992

Full Name:

minichromosome maintenance complex component 5

Calculated MW:

82 kDa

Observed MW:

82-88 kDa

Purification Method:

Antigen affinity purification

Applications

Tested Applications:

WB, IHC, IF/ICC, IP, Indirect ELISA

Species Specificity:

human, mouse, rat

Background Information

Minichromosome maintenance, *S. Cerevisiae*, homolog of 5(MCM5), one component of the complex of MCM2-7, which is the putative replicative essential for once per cell cycle DNA replication initiation and elongation in eukaryotic cells. The MCM complex form a hexameric ring through the interaction surfaces of two neighboring subunits.

Storage

Storage:

Store at -80°C.

Storage Buffer:

PBS only, pH7.3

For technical support and original validation data for this product please contact:

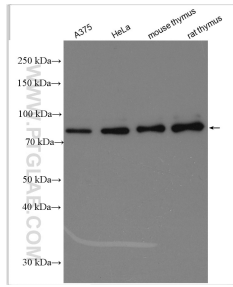
T: 1 (888) 4PTGLAB (1-888-478-4522) (toll free in USA), or 1(312) 455-8498 (outside USA)

E: proteintech@ptglab.com

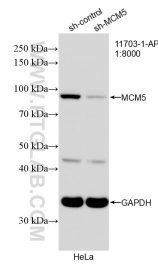
W: ptglab.com

This product is exclusively available under Proteintech Group brand and is not available to purchase from any other manufacturer.

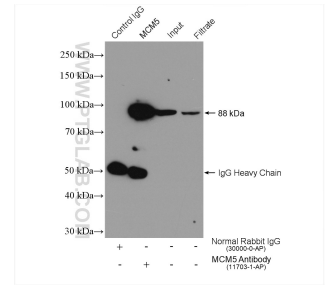
Selected Validation Data



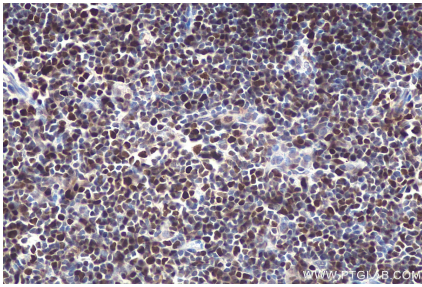
Various lysates were subjected to SDS PAGE followed by western blot with 11703-1-AP (MCM5 antibody) at dilution of 1:8000 incubated at room temperature for 1.5 hours. This data was developed using the same antibody clone with 11703-1-PBS in a different storage buffer formulation.



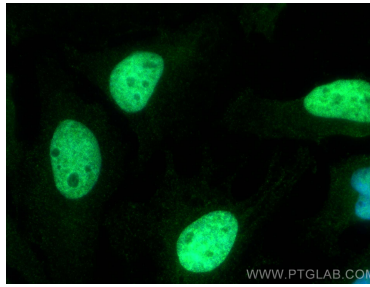
WB result of MCM5 antibody (11703-1-AP; 1:8000; incubated at room temperature for 1.5 hours) with sh-Control and sh-MCM5 transfected HeLa cells. This data was developed using the same antibody clone with 11703-1-PBS in a different storage buffer formulation.



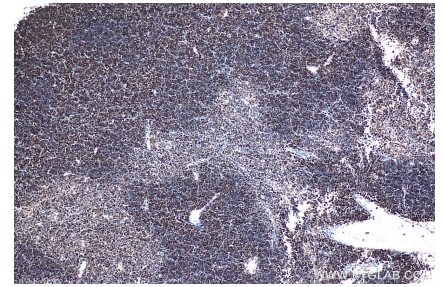
IP result of anti-MCM5 (IP:11703-1-AP, 4ug; Detection:11703-1-AP 1:4000) with Jurkat cells lysate 2400 ug. This data was developed using the same antibody clone with 11703-1-PBS in a different storage buffer formulation.



Immunohistochemical analysis of paraffin-embedded mouse thymus tissue slide using 11703-1-AP (MCM5 antibody) at dilution of 1:1000 (under 40x lens). Heat mediated antigen retrieval with Tris-EDTA buffer (pH 9.0). This data was developed using the same antibody clone with 11703-1-PBS in a different storage buffer formulation.



Immunofluorescent analysis of (4% PFA) fixed HeLa cells using MCM5 antibody (11703-1-AP) at dilution of 1:800 and CoraLite®488-Conjugated AffiniPure Goat Anti-Rabbit IgG(H+L). This data was developed using the same antibody clone with 11703-1-PBS in a different storage buffer formulation.



Immunohistochemical analysis of paraffin-embedded mouse thymus tissue slide using 11703-1-AP (MCM5 antibody) at dilution of 1:1000 (under 10x lens). Heat mediated antigen retrieval with Tris-EDTA buffer (pH 9.0). This data was developed using the same antibody clone with 11703-1-PBS in a different storage buffer formulation.