

For Research Use Only

CSN1 Polyclonal antibody

Catalog Number: 11709-1-AP **1 Publications**



Basic Information

Catalog Number: 11709-1-AP	GenBank Accession Number: BC000155	Purification Method: Antigen affinity purification
Size: 150ul, Concentration: 200 µg/ml by Nanodrop and 193 µg/ml by Bradford method using BSA as the standard;	GeneID (NCBI): 2873	Recommended Dilutions: WB 1:500-1:2000 IP 0.5-4.0 ug for IP and 1:500-1:1000 for WB
Source: Rabbit	Full Name: G protein pathway suppressor 1	IHC 1:20-1:200 IF 1:10-1:100
Isotype: IgG	Calculated MW: 491 aa, 55-60 kDa	
Immunogen Catalog Number: AG2273	Observed MW: 55-70 kDa	

Applications

Tested Applications: IF, IHC, IP, WB, ELISA	Positive Controls: WB : HEK-293 cells, MCF-7 cells, HT-1080 cells, Raji cells, K-562 cells
Cited Applications: WB	IP: HeLa cells,
Species Specificity: human	IHC: human prostate cancer tissue,
Cited Species: human	IF: MCF-7 cells,

Note-IHC: suggested antigen retrieval with TE buffer pH 9.0; (*) Alternatively, antigen retrieval may be performed with citrate buffer pH 6.0

Background Information

Notable Publications

Author	Pubmed ID	Journal	Application
Hangwei Fu	33200803	Mol Med Rep	WB

Storage

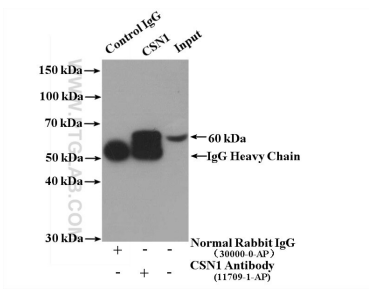
Storage:
Store at -20°C. Stable for one year after shipment.
Storage Buffer:
PBS with 0.02% sodium azide and 50% glycerol pH 7.3.
Aliquoting is unnecessary for -20°C storage

*** 20ul sizes contain 0.1% BSA

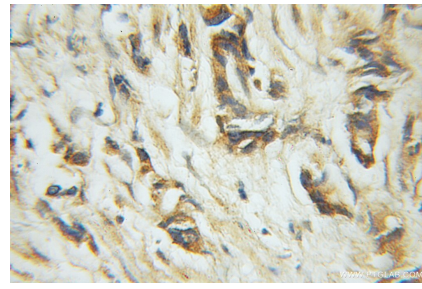
For technical support and original validation data for this product please contact:
T: 1 (888) 4PTGLAB (1-888-478-4522) (toll free in USA), or 1(312) 455-8498 (outside USA)
E: proteintech@ptglab.com
W: ptglab.com

This product is exclusively available under Proteintech Group brand and is not available to purchase from any other manufacturer.

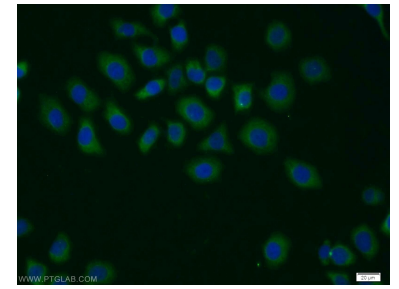
Selected Validation Data



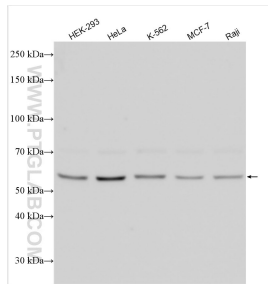
IP result of anti-CSN1 (IP:11709-1-AP, 4ug; Detection:11709-1-AP 1:500) with HeLa cells lysate 2600 ug.



Immunohistochemical analysis of paraffin-embedded human prostate cancer using 11709-1-AP (CSN1 antibody) at dilution of 1:50 (under 10x lens).



Immunofluorescent analysis of MCF-7 cells using 11709-1-AP (CSN1 antibody) at dilution of 1:25 and Alexa Fluor 488-conjugated AffiniPure Goat Anti-Rabbit IgG(H+L).



Various lysates were subjected to SDS PAGE followed by western blot with 11709-1-AP (CSN1 antibody) at dilution of 1:1000 incubated at room temperature for 1.5 hours.