

For Research Use Only

RHOD Polyclonal antibody

Catalog Number: 11717-1-AP



Basic Information

Catalog Number: 11717-1-AP	GenBank Accession Number: BC001338	Purification Method: Antigen affinity purification
Size: 150ul , Concentration: 300 µg/ml by Nanodrop and 147 µg/ml by Bradford method using BSA as the standard;	GeneID (NCBI): 29984	Recommended Dilutions: IHC 1:50-1:500
Source: Rabbit	Full Name: ras homolog gene family, member D	
Isotype: IgG	Calculated MW: 210 aa, 23 kDa	
Immunogen Catalog Number: AG2291		

Applications

Tested Applications:
IF, IHC, ELISA

Species Specificity:
human

Note-IHC: suggested antigen retrieval with TE buffer pH 9.0; (*) Alternatively, antigen retrieval may be performed with citrate buffer pH 6.0

Positive Controls:

IHC : human lung cancer tissue, human heart tissue

Background Information

RhoD is a member of the Rho family of small GTPases, and it has been implicated in integrating actin reorganization and endosome motility. RhoD localizes to early endosomes and recycling endosomes, which indicates its important role in the regulation of endosome trafficking. It is involved in reorganization of the actin cytoskeleton, and it may coordinate membrane transport with the function of the cytoskeleton.

Storage

Storage:

Store at -20°C. Stable for one year after shipment.

Storage Buffer:

PBS with 0.02% sodium azide and 50% glycerol pH 7.3.

Aliquoting is unnecessary for -20°C storage

***** 20ul sizes contain 0.1% BSA**


For technical support and original validation data for this product please contact:

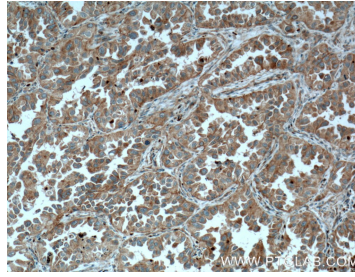
T: 1 (888) 4PTGLAB (1-888-478-4522) (toll free in USA), or 1(312) 455-8498 (outside USA)

E: proteintech@ptglab.com
W: ptglab.com

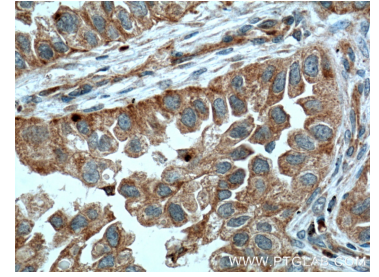
This product is exclusively available under Proteintech Group brand and is not available to purchase from any other manufacturer.

Selected Validation Data


Human Retina Whole Mount generated from human induced pluripotent stem cells (iPSCs) and fixed with 4% PFA. Stained for RHOD with 11717-1-AP at 1:400, ARR3 1:400 Nuclear stain DAPI (blue). Data generated by Alessandro Bellapianta at Johannes Kepler Universitat, Austria.



Immunohistochemical analysis of paraffin-embedded human lung cancer tissue slide using 11717-1-AP (RHOD Antibody) at dilution of 1:200 (under 10x lens). Heat mediated antigen retrieval with Tris-EDTA buffer (pH 9.0).



Immunohistochemical analysis of paraffin-embedded human lung cancer tissue slide using 11717-1-AP (RHOD Antibody) at dilution of 1:200 (under 40x lens). Heat mediated antigen retrieval with Tris-EDTA buffer (pH 9.0).