

For Research Use Only

Maspin Polyclonal antibody, PBS Only

Catalog Number: 11722-1-PBS

Featured Product



Basic Information

Catalog Number:

11722-1-PBS

Size:

100ug, Concentration: 1 mg/ml by Nanodrop;

Source:

Rabbit

Isotype:

IgG

Immunogen Catalog Number:

AG2304

GenBank Accession Number:

BC020713

GeneID (NCBI):

5268

UNIPROT ID:

P36952

Full Name:

serpin peptidase inhibitor, clade B (ovalbumin), member 5

Calculated MW:

375 aa, 42 kDa

Observed MW:

38-42 kDa

Purification Method:

Antigen affinity purification

Applications

Tested Applications:

WB, IHC, IF/ICC, Indirect ELISA

Species Specificity:

human

Background Information

SERPINB5, also named PI-5, Maspin, and Serpin B5, belongs to the serpin family and Ov-serpin subfamily. It is a tumor suppressor. It blocks the growth, invasion, and metastatic properties of mammary tumors. As it does not undergo the S (stressed) to R (relaxed) conformational transition characteristic of active serpins, SERPINB5 exhibits no serine protease inhibitory activity.

Storage

Storage:

Store at -80°C.

Storage Buffer:

PBS only, pH7.3

For technical support and original validation data for this product please contact:

T: 1 (888) 4PTGLAB (1-888-478-4522) (toll free in USA), or 1(312) 455-8498 (outside USA)

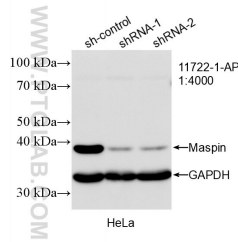
E: proteintech@ptglab.com
W: ptglab.com

This product is exclusively available under Proteintech Group brand and is not available to purchase from any other manufacturer.

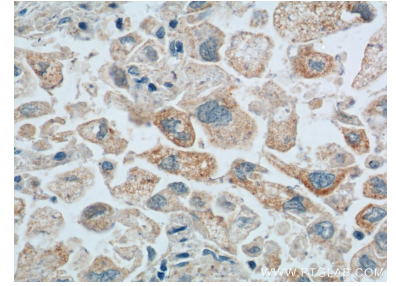
Selected Validation Data



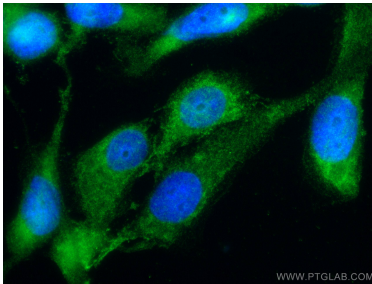
HepG2 cells were subjected to SDS PAGE followed by western blot with 11722-1-AP (Maspin antibody) at dilution of 1:500 incubated at room temperature for 1.5 hours. This data was developed using the same antibody clone with 11722-1-PBS in a different storage buffer formulation.



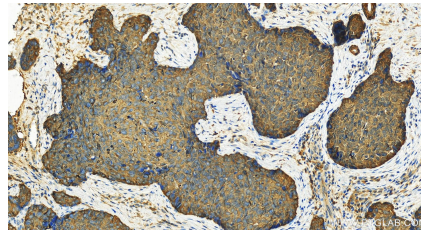
WB result of Maspin antibody (11722-1-AP; 1:4000; incubated at room temperature for 1.5 hours) with sh-Control and sh-Maspin transfected HeLa cells. This data was developed using the same antibody clone with 11722-1-PBS in a different storage buffer formulation.



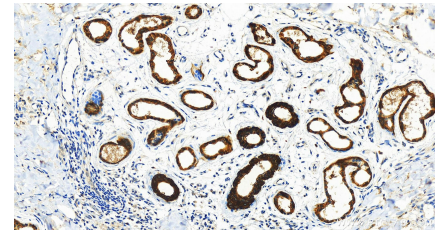
Immunohistochemical analysis of paraffin-embedded human lung cancer tissue slide using 11722-1-AP (Maspin antibody at dilution of 1:200 (under 40x lens). Heat mediated antigen retrieval with Tris-EDTA buffer (pH 9.0). This data was developed using the same antibody clone with 11722-1-PBS in a different storage buffer formulation.



Immunofluorescent analysis of (-20°C Ethanol) fixed A431 cells using Maspin antibody (11722-1-AP) at dilution of 1:200 and CoraLite®488-Conjugated AffiniPure Goat Anti-Rabbit IgG(H+L). This data was developed using the same antibody clone with 11722-1-PBS in a different storage buffer formulation.



Immunohistochemical analysis of paraffin-embedded human Bowen disease slide using 11722-1-AP (Maspin antibody) at dilution of 1:300 (under 20x lens). Heat mediated antigen retrieval with Tris-EDTA buffer (pH 9.0). This data was developed using the same antibody clone with 11722-1-PBS in a different storage buffer formulation.



Immunohistochemical analysis of paraffin-embedded human Bowen disease slide using 11722-1-AP (Maspin antibody) at dilution of 1:300 (under 20x lens). Heat mediated antigen retrieval with Tris-EDTA buffer (pH 9.0). This data was developed using the same antibody clone with 11722-1-PBS in a different storage buffer formulation.