

For Research Use Only

# TWF1 Polyclonal antibody

Catalog Number: 11732-1-AP

Featured Product

5 Publications



## Basic Information

### Catalog Number:

11732-1-AP

### Size:

150ul, Concentration: 450 ug/ml by Nanodrop;

### Source:

Rabbit

### Isotype:

IgG

### Immunogen Catalog Number:

AG2332

### GenBank Accession Number:

BC022344

### GeneID (NCBI):

5756

### UNIPROT ID:

Q12792

### Full Name:

twinfilin, actin-binding protein, homolog 1 (Drosophila)

### Calculated MW:

368 aa, 42 kDa

### Observed MW:

42 kDa

### Purification Method:

Antigen affinity purification

### Recommended Dilutions:

WB 1:2000-1:14000

IHC 1:50-1:500

IF/ICC 1:200-1:800

## Applications

### Tested Applications:

WB, IHC, IF/ICC, ELISA

### Cited Applications:

WB, IHC, IF, CoIP

### Species Specificity:

human, mouse, rat

### Cited Species:

human, mouse

**Note-IHC: suggested antigen retrieval with TE buffer pH 9.0; (\*) Alternatively, antigen retrieval may be performed with citrate buffer pH 6.0**

### Positive Controls:

**WB:** C6 cells, HeLa cells, C2C12 cells, mouse testis tissue, rat testis tissue, NIH/3T3 cells

**IHC:** human lung cancer tissue, human breast cancer tissue

**IF/ICC:** HeLa cells,

## Notable Publications

Author	Pubmed ID	Journal	Application
Lu Li	28864421	Biochem Biophys Res Commun	WB,IF
Jianfeng Tang	39676891	3 Biotech	WB
Sharof Khudayberdiev	38713765	Sci Signal	WB

## Storage

### Storage:

Store at -20°C. Stable for one year after shipment.

### Storage Buffer:

PBS with 0.02% sodium azide and 50% glycerol pH 7.3.

Aliquoting is unnecessary for -20°C storage

\*\*\* 20ul sizes contain 0.1% BSA

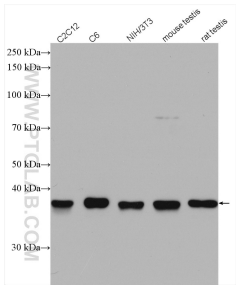
For technical support and original validation data for this product please contact:

T: 1 (888) 4PTGLAB (1-888-478-4522) (toll free in USA), or 1(312) 455-8498 (outside USA)

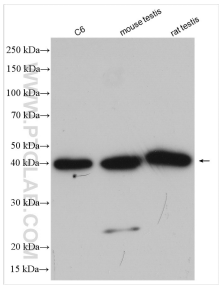
E: [proteintech@ptglab.com](mailto:proteintech@ptglab.com)  
W: [ptglab.com](http://ptglab.com)

This product is exclusively available under Proteintech Group brand and is not available to purchase from any other manufacturer.

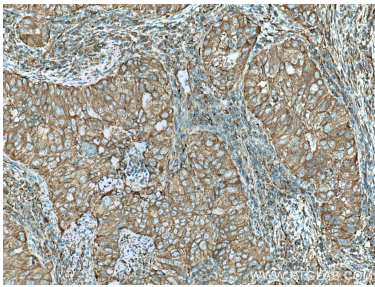
Selected Validation Data



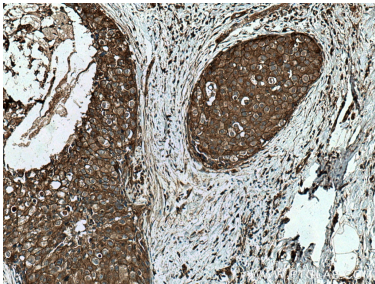
Various lysates were subjected to SDS PAGE followed by western blot with 11732-1-AP (TWF1 antibody) at dilution of 1:3000 incubated at room temperature for 1.5 hours.



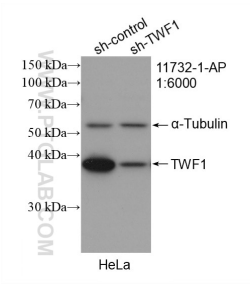
Various lysates were subjected to SDS PAGE followed by western blot with 11732-1-AP (TWF1 antibody) at dilution of 1:7000 incubated at room temperature for 1.5 hours.



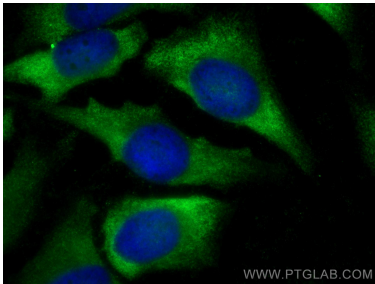
Immunohistochemical analysis of paraffin-embedded human lung cancer tissue slide using 11732-1-AP (TWF1 antibody) at dilution of 1:200 (under 10x lens). Heat mediated antigen retrieval with Tris-EDTA buffer (pH 9.0).



Immunohistochemical analysis of paraffin-embedded human breast cancer tissue slide using 11732-1-AP (TWF1 antibody) at dilution of 1:200 (under 10x lens). Heat mediated antigen retrieval with Tris-EDTA buffer (pH 9.0).



WB result of TWF1 antibody (11732-1-AP; 1:6000; incubated at room temperature for 1.5 hours) with sh-Control and sh-TWF1 transfected HeLa cells.



Immunofluorescent analysis of (-20°C Ethanol) fixed HeLa cells using TWF1 antibody (11732-1-AP) at dilution of 1:400 and CoraLite®488-Conjugated Goat Anti-Rabbit IgG(H+L).