

For Research Use Only

# THOP1 Polyclonal antibody

Catalog Number: 11738-1-AP



## Basic Information

### Catalog Number:

11738-1-AP

### Size:

150ul, Concentration: 400 ug/ml by Nanodrop;

### Source:

Rabbit

### Isotype:

IgG

### Immunogen Catalog Number:

AG2268

### GenBank Accession Number:

BC000135

### GeneID (NCBI):

7064

### UNIPROT ID:

P52888

### Full Name:

thimet oligopeptidase 1

### Calculated MW:

689 aa, 79 kDa

### Observed MW:

79 kDa

### Purification Method:

Antigen affinity purification

### Recommended Dilutions:

WB 1:1000-1:6000

IP 0.5-4.0 ug for 1.0-3.0 mg of total protein lysate

IHC 1:20-1:200

## Applications

### Tested Applications:

WB, IP, IHC, ELISA

### Species Specificity:

human, mouse, rat

**Note-IHC: suggested antigen retrieval with TE buffer pH 9.0; (\*) Alternatively, antigen retrieval may be performed with citrate buffer pH 6.0**

### Positive Controls:

**WB**: HEK-293T cells, HeLa cells, Jurkat cells, K-562 cells, human placenta tissue

**IP**: human placenta tissue,

**IHC**: human colon cancer tissue,

## Background Information

Thimet oligopeptidase (THOP1) is a metallopeptidase implicated in the metabolism of many sleep-related peptides, including angiotensin I, gonadotropin releasing hormone (GnRH), neurotensin, and opioid peptides

## Storage

### Storage:

Store at -20°C. Stable for one year after shipment.

### Storage Buffer:

PBS with 0.02% sodium azide and 50% glycerol pH 7.3.

Aliquoting is unnecessary for -20°C storage

\*\*\* 20ul sizes contain 0.1% BSA

For technical support and original validation data for this product please contact:

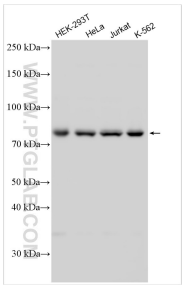
T: 1 (888) 4PTGLAB (1-888-478-4522) (toll free in USA), or 1(312) 455-8498 (outside USA)

E: [proteintech@ptglab.com](mailto:proteintech@ptglab.com)

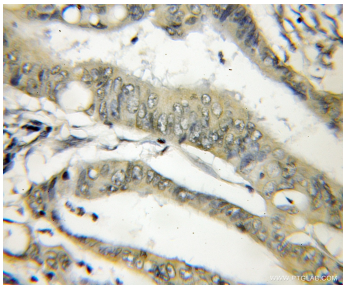
W: [ptglab.com](http://ptglab.com)

This product is exclusively available under Proteintech Group brand and is not available to purchase from any other manufacturer.

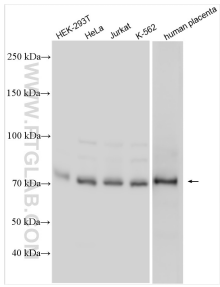
Selected Validation Data



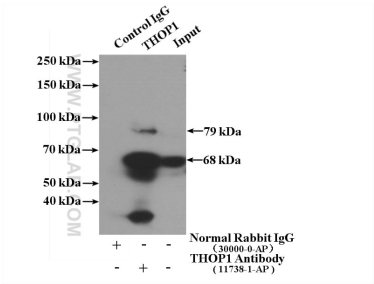
Various lysates were subjected to SDS PAGE followed by western blot with 11738-1-AP (THOP1 antibody) at dilution of 1:3000 incubated at room temperature for 1.5 hours.



Immunohistochemical analysis of paraffin-embedded human colon cancer using 11738-1-AP (THOP1 antibody) at dilution of 1:50 (under 10x lens).



Various lysates were subjected to SDS PAGE followed by western blot with 11738-1-AP (THOP1 antibody) at dilution of 1:6000 incubated at room temperature for 1.5 hours.



IP result of anti-THOP1 (IP:11738-1-AP, 4ug; Detection:11738-1-AP 1:500) with human placenta tissue lysate 1520ug.