

For Research Use Only

# ASGR1 Polyclonal antibody

Catalog Number: 11739-1-AP

Featured Product

24 Publications



## Basic Information

### Catalog Number:

11739-1-AP

### Size:

150ul, Concentration: 650 ug/ml by Nanodrop;

### Source:

Rabbit

### Isotype:

IgG

### Immunogen Catalog Number:

AG2310

### GenBank Accession Number:

BC032130

### GeneID (NCBI):

432

### UNIPROT ID:

P07306

### Full Name:

asialoglycoprotein receptor 1

### Calculated MW:

291 aa, 33 kDa

### Observed MW:

38-42 kDa

### Purification Method:

Antigen affinity purification

### Recommended Dilutions:

WB: 1:5000-1:50000

IP: 0.5-4.0 ug for 1.0-3.0 mg of total protein lysate

IHC: 1:1000-1:4000

IF-P: 1:50-1:500

FC: 0.40 ug per 10<sup>6</sup> cells in a 100 µl suspension

## Applications

### Tested Applications:

WB, IHC, IF-P, FC, IP, ELISA

### Cited Applications:

WB, IHC, IF, FC, CoIP, Blocking assay

### Species Specificity:

human, mouse, rat

### Cited Species:

human, mouse, pig, monkey

**Note-IHC: suggested antigen retrieval with TE buffer pH 9.0; (\*) Alternatively, antigen retrieval may be performed with citrate buffer pH 6.0**

### Positive Controls:

**WB**: HepG2 cells, human liver tissue, mouse liver tissue, rat liver tissue

**IP**: mouse liver tissue,

**IHC**: rat liver tissue, human liver cancer tissue, mouse liver tissue

**IF-P**: human liver cancer tissue, human liver tissue, rat liver tissue

**FC**: HepG2 cells,

## Background Information

Asialoglycoprotein receptor (ASGPR), also known as the hepatic galactose/N-acetylglucosamine (GlcNAc) receptor or Ashwell receptor, is a C-type lectin expressed exclusively in hepatic parenchymal cells. ASGPR consists of two subunits, a major subunit (ASGR1, HL-1) and a minor subunit (ASGR2, HL-2), and specifically recognizes terminal  $\beta$ -linked galactose or GlcNAc on circulating glycoproteins or cells. This receptor plays a critical role in serum glycoprotein homeostasis by mediating the endocytosis and lysosomal degradation of glycoproteins that contain terminal galactose or GlcNAc residues. ASGPR may facilitate hepatic infection by multiple viruses including hepatitis B, and is also a target for liver-specific drug delivery.

## Notable Publications

Author	Pubmed ID	Journal	Application
Juergen Scharner	30965276	Mol Ther Nucleic Acids	WB, IHC
Wai Kit Ma	34921016	Cancer Res	WB
Youngsoo Kim	31303442	Mol Ther	IHC, IF

## Storage

### Storage:

Store at -20°C. Stable for one year after shipment.

### Storage Buffer:

PBS with 0.02% sodium azide and 50% glycerol, pH7.3

Aliquoting is unnecessary for -20°C storage

\*\*\* 20ul sizes contain 0.1% BSA

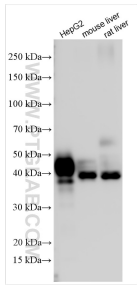
For technical support and original validation data for this product please contact:

T: 1 (888) 4PTGLAB (1-888-478-4522) (toll free in USA), or 1(312) 455-8498 (outside USA)

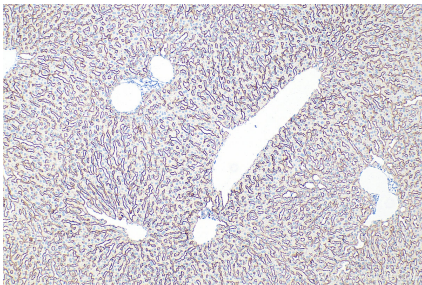
E: [proteintech@ptglab.com](mailto:proteintech@ptglab.com)  
W: [ptglab.com](http://ptglab.com)

This product is exclusively available under Proteintech Group brand and is not available to purchase from any other manufacturer.

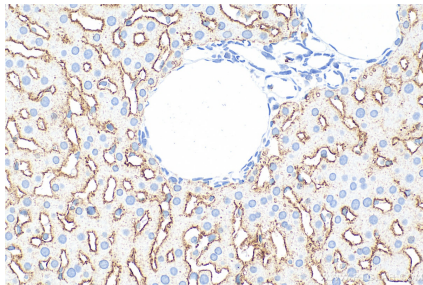
Selected Validation Data



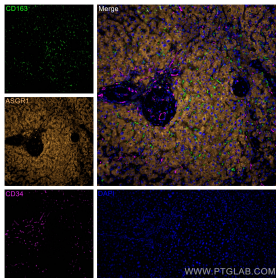
Various lysates were subjected to SDS PAGE followed by western blot with 11739-1-AP (ASGR1 antibody) at dilution of 1:20000 incubated at room temperature for 1.5 hours.



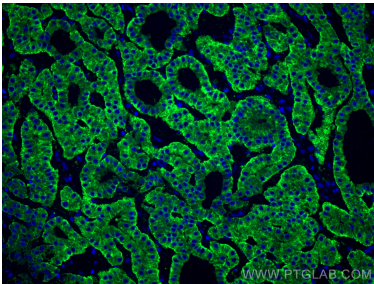
Immunohistochemical analysis of paraffin-embedded rat liver tissue slide using 11739-1-AP (ASGR1 antibody) at dilution of 1:2000 (under 10x lens). Heat mediated antigen retrieval with Tris-EDTA buffer (pH 9.0).



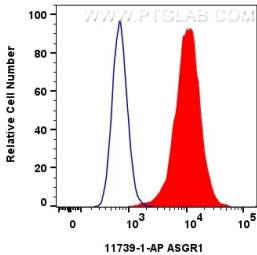
Immunohistochemical analysis of paraffin-embedded rat liver tissue slide using 11739-1-AP (ASGR1 antibody) at dilution of 1:2000 (under 40x lens). Heat mediated antigen retrieval with Tris-EDTA buffer (pH 9.0).



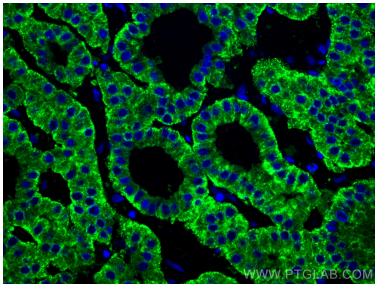
Immunofluorescent analysis of (4% PFA) fixed paraffin-embedded human liver tissue using ASGR1 antibody (11739-1-AP) labeled with FlexAble CoraLite Plus 555 Kit (KFA502, orange), CoraLite® Plus 488 CD163 antibody (CL488-16646, green), CD34 antibody (60180-1-Ig, Clone: 3C8G12) at dilution of 1:200 and Multi-rAb CoraLite® Plus 647-Goat Anti-Mouse Recombinant Secondary Antibody (H+L) (RGAM005, magenta). Heat mediated antigen retrieval with Tris-EDTA buffer (pH 9.0).



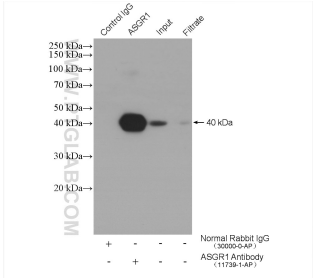
Immunofluorescent analysis of (4% PFA) fixed human liver cancer tissue using ASGR1 antibody (11739-1-AP) at dilution of 1:200 and CoraLite® 488-Conjugated Goat Anti-Rabbit IgG(H+L).



1x10<sup>6</sup> HepG2 cells were surface stained with 0.4 ug ASGR1 Polyclonal antibody (11739-1-AP) and CoraLite® 488-Conjugated Goat Anti-Rabbit IgG(H+L) (SA00013-2)(red), or 0.4 ug Rabbit IgG control Rabbit PolyAb (30000-0-AP) (blue). Cells were not fixed.



Immunofluorescent analysis of (4% PFA) fixed human liver cancer tissue using ASGR1 antibody (11739-1-AP) at dilution of 1:200 and CoraLite® 488-Conjugated Goat Anti-Rabbit IgG(H+L).



IP result of anti-ASGR1 (IP:11739-1-AP, 4ug; Detection:11739-1-AP 1:2000) with mouse liver tissue lysate 4000 ug.