

For Research Use Only

TPX2 Polyclonal antibody

Catalog Number: 11741-1-AP

Featured Product

20 Publications



Basic Information

Catalog Number:

11741-1-AP

Size:

150ul, Concentration: 1000 ug/ml by Nanodrop and 300 ug/ml by Bradford method using BSA as the standard;

Source:

Rabbit

Isotype:

IgG

Immunogen Catalog Number:

AG2334

GenBank Accession Number:

BC020207

GeneID (NCBI):

22974

UNIPROT ID:

Q9ULW0

Full Name:

TPX2, microtubule-associated, homolog (Xenopus laevis)

Calculated MW:

747 aa, 86 kDa

Observed MW:

100 kDa

Purification Method:

Antigen affinity purification

Recommended Dilutions:

WB 1:2000-1:10000

IP 0.5-4.0 ug for 1.0-3.0 mg of total protein lysate

IHC 1:300-1:1200

IF/ICC 1:200-1:800

Applications

Tested Applications:

WB, IHC, IF/ICC, IP, ELISA

Cited Applications:

WB, IHC, IF, CoIP, ChIP

Species Specificity:

human, mouse, rat

Cited Species:

human, mouse

Positive Controls:

WB : HepG2 cells, K-562 cells, HeLa cells, SMMC-7721 cells

IP : HeLa cells,

IHC : human colon cancer tissue, human breast cancer tissue, human prostate cancer tissue

IF/ICC : HepG2 cells, HeLa cells

Note-IHC: suggested antigen retrieval with TE buffer pH 9.0; (*) Alternatively, antigen retrieval may be performed with citrate buffer pH 6.0

Background Information

TPX2, also known as DIL2, p10, is a microtubule organization- and cell cycle-associated protein. In the early stage of mitosis, TPX2 is released in a RanGTP-dependent manner and plays a significant role in mitotic spindle formation and subsequent proper segregation of chromosomes during cell division. Furthermore, during interphase, TPX2 is involved in DNA damage response by regulation of γ -H2AX signals (PMID: 25914189). Aberrant expression of TPX2 leads to improper spindle assembly and chromosomal instability. Overexpressed in cancers, TPX2 is being established as the marker for the diagnosis and prognosis of malignancies (PMID: 24556998).

Notable Publications

Author	Pubmed ID	Journal	Application
Haining Zhou	31521166	BMC Biol	WB,IF
Meng-Wen Hu	26349807	J Cell Sci	WB
Cuijie Shao	27777511	Cancer Cell Int	WB,IHC

Storage

Storage:

Store at -20°C. Stable for one year after shipment.

Storage Buffer:

PBS with 0.02% sodium azide and 50% glycerol pH 7.3.

Aliquoting is unnecessary for -20°C storage

*** 20ul sizes contain 0.1% BSA

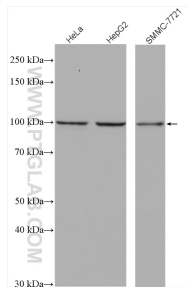
For technical support and original validation data for this product please contact:

T: 1 (888) 4PTGLAB (1-888-478-4522) (toll free in USA), or 1(312) 455-8498 (outside USA)

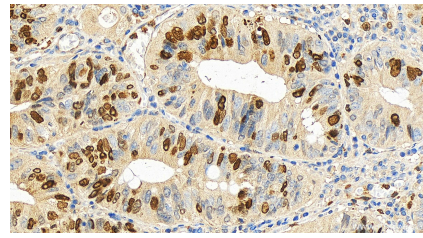
E: proteintech@ptglab.com
W: ptglab.com

This product is exclusively available under Proteintech Group brand and is not available to purchase from any other manufacturer.

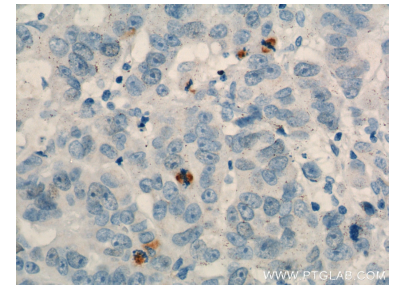
Selected Validation Data



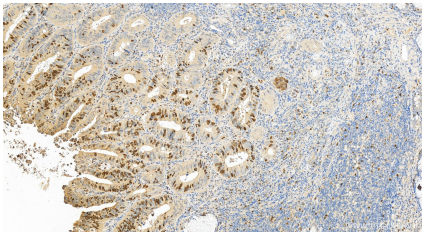
Various lysates were subjected to SDS PAGE followed by western blot with 11741-1-AP (TPX2 antibody) at dilution of 1:5000 incubated at room temperature for 1.5 hours.



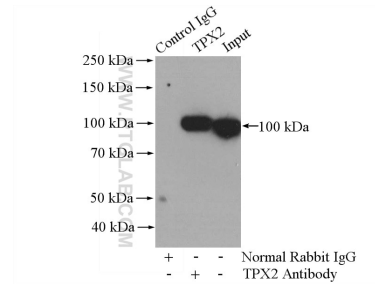
Immunohistochemical analysis of paraffin-embedded human colon cancer tissue slide using 11741-1-AP (TPX2 antibody) at dilution of 1:600 (under 20x lens). Heat mediated antigen retrieval with Tris-EDTA buffer (pH 9.0).



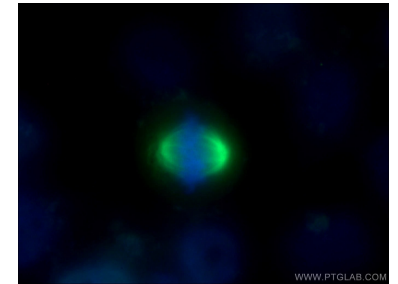
Immunohistochemical analysis of paraffin-embedded human prostate cancer tissue slide using 11741-1-AP (TPX2 Antibody) at dilution of 1:200 (under 40x lens). Heat mediated antigen retrieval with Tris-EDTA buffer (pH 9.0).



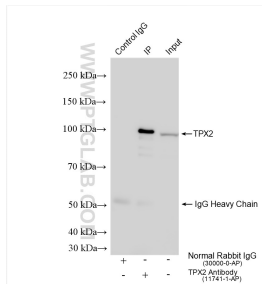
Immunohistochemical analysis of paraffin-embedded human colon cancer tissue slide using 11741-1-AP (TPX2 antibody) at dilution of 1:600 (under 20x lens). Heat mediated antigen retrieval with Tris-EDTA buffer (pH 9.0).



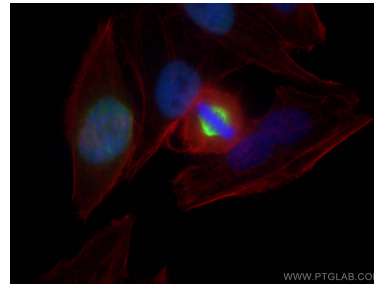
IP result of anti-TPX2 (IP:11741-1-AP, 4ug; Detection:11741-1-AP 1:800) with HeLa cells lysate 880ug.



Immunofluorescent analysis of (4% PFA) fixed HeLa cells using 11741-1-AP (TPX2 antibody) at dilution of 1:100 and Alexa Fluor 488-conjugated AffiniPure Goat Anti-Rabbit IgG(H+L).



IP result of anti-TPX2 (IP:11741-1-AP, 4ug; Detection:11741-1-AP 1:4000) with HeLa cells lysate 1760 ug.



Immunofluorescent analysis of (4% PFA) fixed HepG2 cells using TPX2 antibody (11741-1-AP) at dilution of 1:400 and CoraLite®488-Conjugated AffiniPure Goat Anti-Rabbit IgG(H+L), CL594-phalloidin (red).