

For Research Use Only

PSMB1 Polyclonal antibody

Catalog Number: 11749-1-AP **15 Publications**



Basic Information

Catalog Number: 11749-1-AP	GenBank Accession Number: BC020807	Purification Method: Antigen affinity purification
Size: 150ul, Concentration: 550 µg/ml by Nanodrop and 300 µg/ml by Bradford method using BSA as the standard;	GeneID (NCBI): 5689	Recommended Dilutions: WB 1:500-1:2000 IHC 1:250-1:1000 IF 1:50-1:500
Source: Rabbit	UNIPROT ID: P20618	
Isotype: IgG	Full Name: proteasome (prosome, macropain) subunit, beta type, 1	
Immunogen Catalog Number: AG2345	Calculated MW: 241 aa, 26 kDa	
	Observed MW: 25 kDa	

Applications

Tested Applications: FC, IF, IHC, WB, ELISA	Positive Controls:
Cited Applications: IF, IHC, WB	WB: MCF-7 cells, human brain tissue, HepG2 cells, HeLa cells, NIH/3T3 cells
Species Specificity: human, mouse, rat	IHC: human liver cancer tissue, human breast cancer tissue
Cited Species: human, rat, mouse	IF: U2OS cells,

Note-IHC: suggested antigen retrieval with TE buffer pH 9.0; (*) Alternatively, antigen retrieval may be performed with citrate buffer pH 6.0

Background Information

PSMB1 (Proteasome subunit beta type-1) is also named as PSC5 and belongs to the peptidase T1B family. The proteasome is a multicatalytic proteinase complex which is characterized by its ability to cleave peptides with Arg, Phe, Tyr, Leu, and Glu adjacent to the leaving group at neutral or slightly basic pH. The gene encodes a 241 amino acid protein with a 28 amino acid propeptide and two glycosylation sites.

Notable Publications

Author	Pubmed ID	Journal	Application
Fangyi Wu	36124946	Rheumatology (Oxford)	WB
Huan-Xiong Chen	25415668	Medicine (Baltimore)	IHC
Guiyou Tian	34010456	EMBO J	WB

Storage

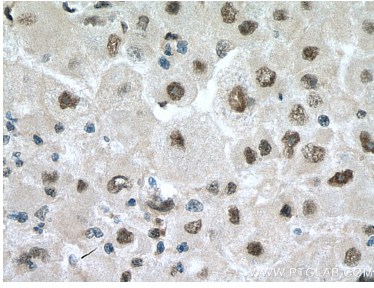
Storage:
Store at -20°C. Stable for one year after shipment.
Storage Buffer:
PBS with 0.02% sodium azide and 50% glycerol pH 7.3.
Aliquoting is unnecessary for -20°C storage

*** 20ul sizes contain 0.1% BSA

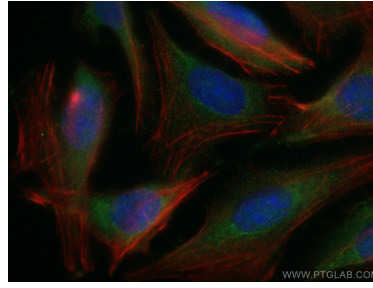
For technical support and original validation data for this product please contact:
T: 1 (888) 4PTGLAB (1-888-478-4522) (toll free in USA), or 1(312) 455-8498 (outside USA)
E: proteintech@ptglab.com
W: ptglab.com

This product is exclusively available under Proteintech Group brand and is not available to purchase from any other manufacturer.

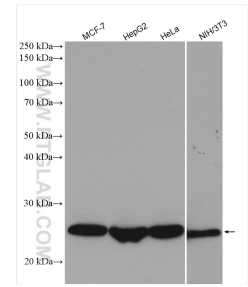
Selected Validation Data



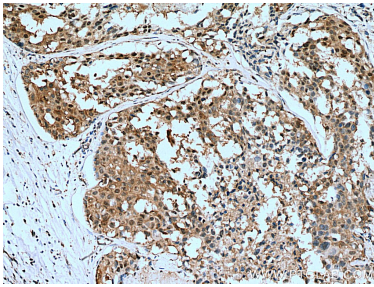
Immunohistochemical analysis of paraffin-embedded human liver cancer tissue slide using 11749-1-AP (PSMB1 antibody) at dilution of 1:500 (under 40x lens). Heat mediated antigen retrieval with Tris-EDTA buffer (pH 9.0).



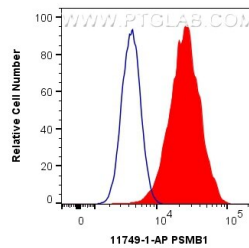
Immunofluorescent analysis of (-20°C Ethanol) fixed U2OS cells using 11749-1-AP (PSMB1 antibody), at dilution of 1:200 and CoraLite®488-Conjugated AffiniPure Goat Anti-Rabbit IgG(H+L). Red stain with CL594-Phalloidin. Blue stain with DAPI.



Various lysates were subjected to SDS PAGE followed by western blot with 11749-1-AP (PSMB1) antibody at dilution of 1:1000 incubated at room temperature for 1.5 hours.



Immunohistochemical analysis of paraffin-embedded human breast cancer tissue slide using 11749-1-AP (PSMB1 antibody) at dilution of 1:500 (under 10x lens). Heat mediated antigen retrieval with Tris-EDTA buffer (pH 9.0).



1X10⁶ HeLa cells were intracellularly stained with 0.4 ug Anti-Human PSMB1 (11749-1-AP) and CoraLite®488-Conjugated AffiniPure Goat Anti-Rabbit IgG(H+L) at dilution 1:1000 (red), or 0.4 ug Isotype Control. Cells were fixed with 4% PFA and permeabilized with Flow Cytometry Perm Buffer (PF00011-C).