

For Research Use Only

FKBP3 Polyclonal antibody

Catalog Number: 11755-1-AP

Featured Product

2 Publications



Basic Information

Catalog Number:

11755-1-AP

Size:

150ul, Concentration: 650 ug/ml by Nanodrop and 380 ug/ml by Bradford method using BSA as the standard;

Source:

Rabbit

Isotype:

IgG

Immunogen Catalog Number:

AG2351

GenBank Accession Number:

BC020809

GeneID (NCBI):

2287

UNIPROT ID:

Q00688

Full Name:

FK506 binding protein 3, 25kDa

Calculated MW:

224 aa, 25 kDa

Observed MW:

25-30 kDa

Purification Method:

Antigen affinity purification

Recommended Dilutions:

WB 1:500-1:2000

IHC 1:50-1:500

IF/ICC 1:50-1:500

Applications

Tested Applications:

WB, IHC, IF/ICC, ELISA

Cited Applications:

WB, IHC

Species Specificity:

human, mouse, rat

Cited Species:

human

Note-IHC: suggested antigen retrieval with TE buffer pH 9.0; (*) Alternatively, antigen retrieval may be performed with citrate buffer pH 6.0

Positive Controls:

WB: PC-3 cells, HeLa cells, A431 cells

IHC: mouse brain tissue, human lung cancer tissue, human testis tissue

IF/ICC: HeLa cells, HepG2 cells

Notable Publications

Author	Pubmed ID	Journal	Application
Yang Zhai	33648465	BMC Cancer	IHC
Xiaojing Xing	37987202	J Cell Mol Med	WB

Storage

Storage:

Store at -20°C. Stable for one year after shipment.

Storage Buffer:

PBS with 0.02% sodium azide and 50% glycerol pH 7.3.

Aliquoting is unnecessary for -20°C storage

*** 20ul sizes contain 0.1% BSA

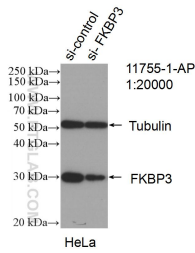
For technical support and original validation data for this product please contact:

T: 1 (888) 4PTGLAB (1-888-478-4522) (toll free in USA), or 1(312) 455-8498 (outside USA)

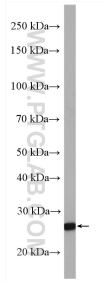
E: proteintech@ptglab.com
W: ptglab.com

This product is exclusively available under Proteintech Group brand and is not available to purchase from any other manufacturer.

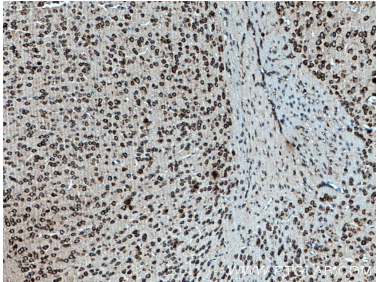
Selected Validation Data



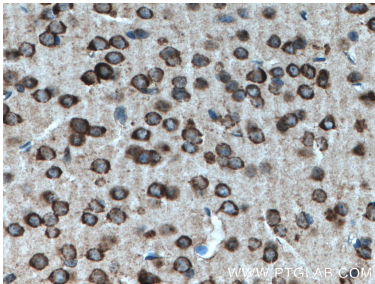
WB result of FKBP3 antibody (11755-1-AP; 1:20000; incubated at room temperature for 1.5 hours) with sh-Control and sh-FKBP3 transfected HeLa cells.



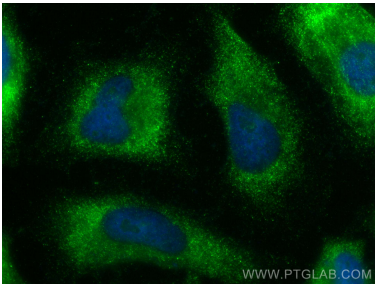
PC-3 cells were subjected to SDS PAGE followed by western blot with 11755-1-AP (FKBP3 antibody) at dilution of 1:1000 incubated at room temperature for 1.5 hours.



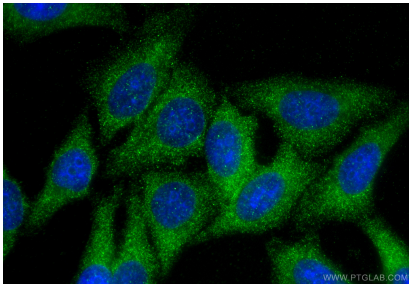
Immunohistochemical analysis of paraffin-embedded mouse brain tissue slide using 11755-1-AP (FKBP3 antibody) at dilution of 1:200 (under 10x lens. Heat mediated antigen retrieval with Tris-EDTA buffer (pH 9.0).



Immunohistochemical analysis of paraffin-embedded mouse brain tissue slide using 11755-1-AP (FKBP3 antibody) at dilution of 1:200 (under 40x lens. Heat mediated antigen retrieval with Tris-EDTA buffer (pH 9.0).



Immunofluorescent analysis of (-20°C Ethanol) fixed HeLa cells using FKBP3 antibody (11755-1-AP) at dilution of 1:200 and CoraLite®488-Conjugated AffiniPure Goat Anti-Rabbit IgG(H+L) (SA00013-2).



Immunofluorescent analysis of (-20°C Ethanol) fixed HepG2 cells using FKBP3 antibody (11755-1-AP) at dilution of 1:200 and CoraLite®488-Conjugated Goat Anti-Rabbit IgG(H+L) (SA00013-2).