

For Research Use Only

RAB2B Polyclonal antibody

Catalog Number: 11756-1-AP **1 Publications**



Basic Information

Catalog Number: 11756-1-AP	GenBank Accession Number: BC020839	Purification Method: Antigen affinity purification
Size: 150ul , Concentration: 650 µg/ml by Nanodrop and 373 µg/ml by Bradford method using BSA as the standard;	GeneID (NCBI): 84932	Recommended Dilutions: WB 1:500-1:3000
Source: Rabbit	Full Name: RAB2B, member RAS oncogene family	
Isotype: IgG	Calculated MW: 216 aa, 24 kDa	
Immunogen Catalog Number: AG2352	Observed MW: 24 kDa	

Applications

Tested Applications: WB, ELISA	Positive Controls: WB : human brain tissue, rat brain tissue, mouse kidney tissue, HeLa cells, mouse brain tissue
Cited Applications: IHC	
Species Specificity: human, mouse, rat	
Cited Species: human	

Background Information

The protein belongs to the Rab family, members of which are small molecular weight guanosine triphosphatases (GTPases) that contain highly conserved domains involved in GTP binding and hydrolysis. The Rabs are membrane-bound proteins, involved in vesicular fusion and trafficking. This protein is a resident of pre-Golgi intermediates, and is required for protein transport from the endoplasmic reticulum (ER) to the Golgi complex. This antibody can recognize both RAB2A and RAB2B.

Notable Publications

Author	Pubmed ID	Journal	Application
Xiubing Chen	36712921	Dis Markers	IHC

Storage

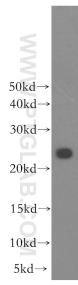
Storage:
Store at -20°C. Stable for one year after shipment.
Storage Buffer:
PBS with 0.02% sodium azide and 50% glycerol pH 7.3.
Aliquoting is unnecessary for -20°C storage

*** 20ul sizes contain 0.1% BSA

For technical support and original validation data for this product please contact:
T: 1 (888) 4PTGLAB (1-888-478-4522) (toll free in USA), or 1(312) 455-8498 (outside USA)
E: proteintech@ptglab.com
W: ptglab.com

This product is exclusively available under Proteintech Group brand and is not available to purchase from any other manufacturer.

Selected Validation Data



human brain tissue were subjected to SDS PAGE followed by western blot with 11756-1-AP (RAB2B antibody) at dilution of 1:800 incubated at room temperature for 1.5 hours.